

SURVEY OF
SEC. 9, T26S, R7W, W. M.

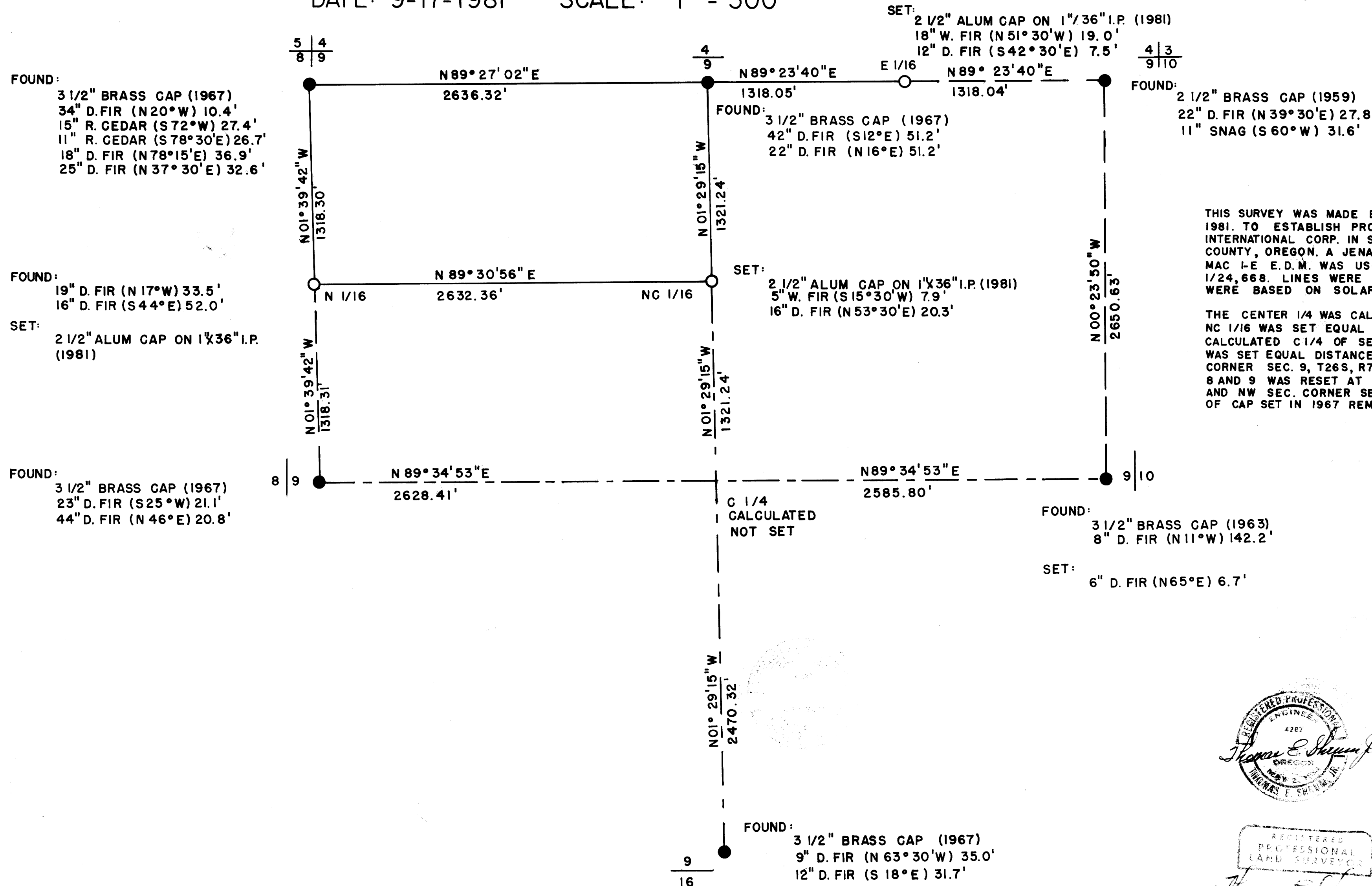
SURVEYED FOR: CHAMPION INTERNATIONAL CORPORATION
SURVEYED BY: T.E. SHRUM JR. P.L.S. 1706
DATE: 9-17-1981 SCALE: 1" = 500'

FILED
RECEIVED *BS*

OCT 27 1981

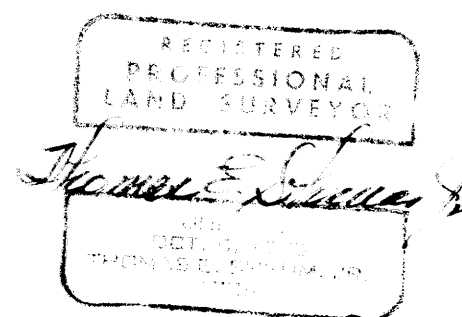
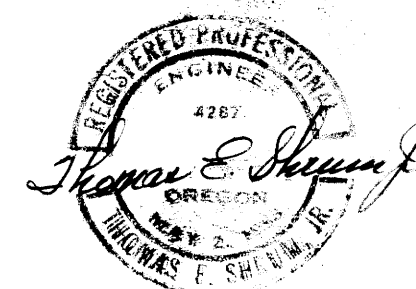
COUNTY SURVEYOR
DOUGLAS COUNTY, ORE.

CHAMPION INTERNATIONAL CORPORATION
P.O. BOX 1328
ROSEBURG, OR. 97470



THIS SURVEY WAS MADE BY T.E. SHRUM JR. IN AUGUST 1981 TO ESTABLISH PROPERTY LINES FOR CHAMPION INTERNATIONAL CORP. IN SEC. 9, T26S, R7W, W. M. DOUGLAS COUNTY, OREGON. A JENA THEODOLITE 020A WITH A MAC I-E E.D.M. WAS USED. ERROR OF CLOSURE WAS 1/24,668. LINES WERE BLAZED AND RIBBONED. BEARINGS WERE BASED ON SOLAR OBSERVATION.

THE CENTER 1/4 WAS CALCULATED, BUT NOT SET. THE NC 1/16 WAS SET EQUAL DISTANCES BETWEEN N 1/4 AND CALCULATED C 1/4 OF SEC. 9, T26S, R7W. THE E 1/16 WAS SET EQUAL DISTANCES BETWEEN N 1/4 AND NE SEC. CORNER SEC. 9, T26S, R7W. THE N 1/16 BETWEEN SEC. 8 AND 9 WAS RESET AT EQUAL DISTANCES BETWEEN W 1/4 AND NW SEC. CORNER SEC. 9, T26S, R7W. NO EVIDENCE OF CAP SET IN 1967 REMAINED.



MAP FILE 189-29

MAP FILE 189-29