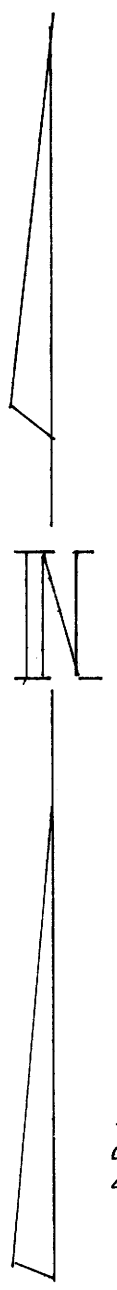


FILED
RECEIVED
OCT 27 1981
COUNTY SURVEYOR
DOUGLAS COUNTY, ORE.

MAP FILE M 89-25



BEARINGS TRUE - BASED ON POLARIS AT EAST ELONGATION.

SECTION CORNER
Re-established corner from May 1945 and Oct. 1950 Oregon State Highway Department ties of found Section corner. Aisle set last to construction re-set corner from 8/W stations 86+50.26 (141' out) & 76+44.12 PCS (150 out) - Set 5/8" re-bar at corner Douglas Co Surveyor Set brass cap dated 1981 see Ref. # 124 Douglas Co.

1/4 CORNER SECTIONS 16 & 15
NOT FOUND OR SET

1/4 CORNER SECTIONS 16 & 21
Find 1/2 pipe - bent, used point at ground)
4" cedar N 63° E 32' to center - BT
8" hemlock S 69° E 8' BT
See Ref. # 15 & 81 Douglas Co.

1/4 CORNER SECTIONS 15 & 22
Find Douglas Co. brass cap witness corner 7' west of the corner 1958
See Ref. # 35 Douglas Co.

PROPORTIONED SECTION CORNER.
Set 5/8"x30" re-bar at corner & scribe
24" fir N 69° E 61' T21S R4W S15 BT
15" fir S 74° E 13' T21S R4W S22 BT
18" fir S 37° W 28' T21S R4W S21 BT
18" fir N 47° W 9' T21S R4W S16 BT

SURVEY NOTES:-

Section 21 in Township 21 South, Range 4 West Willamette Meridian was surveyed and subdivided by the rules established in the Manual of Surveying Instructions 1973 by the Bureau of Land Management. Lines were run with theodolite, Electric distance meter, 300 & 100 foot engineers tape and plumb bobs.

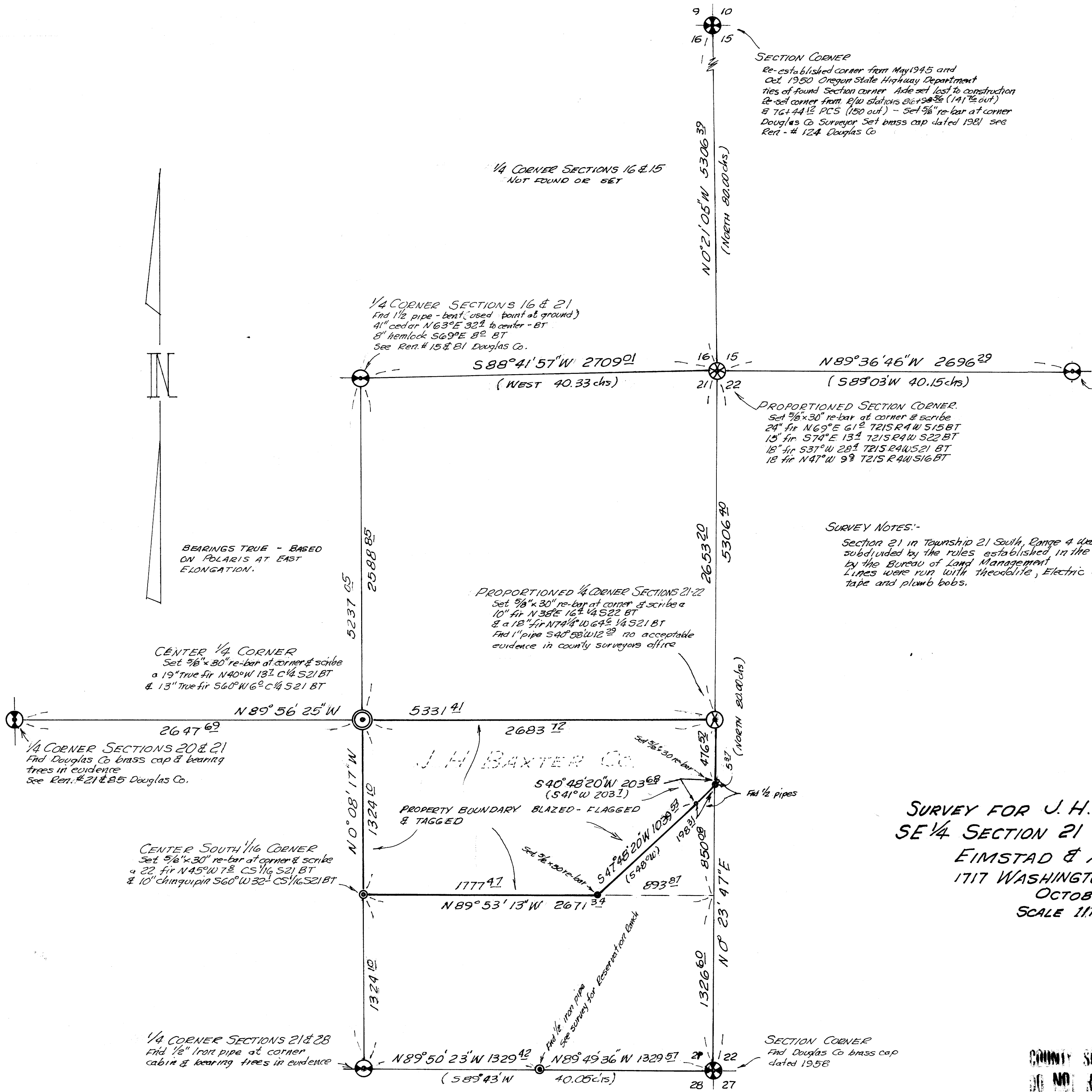
PROPORTIONED 1/4 CORNER SECTIONS 21-22
Set 5/8"x30" re-bar at corner & scribe a
10" fir N 38° E 16' 1/4 S22 BT
& a 18" fir N 74° W 64' 1/4 S21 BT
Find 1" pipe S 40° 58' W 12' 22" no acceptable evidence in county surveyors office

CENTER 1/4 CORNER
Set 5/8"x30" re-bar at corner & scribe
a 19" true fir N 40° W 13' 1/4 S21 BT
& 13" true fir S 60° W 16' 1/4 S21 BT

1/4 CORNER SECTIONS 20 & 21
Find Douglas Co brass cap & bearing trees in evidence
See Ref. # 21 & 85 Douglas Co.

CENTER SOUTH 1/4 CORNER
Set 5/8"x30" re-bar at corner & scribe
a 22" fir N 45° W 7' & CS 1/4 S21 BT
& 10" chinquapin S 60° W 32' CS 1/4 S21 BT

1/4 CORNER SECTIONS 21 & 28
Find 1/2" iron pipe at corner cabin & bearing trees in evidence



SURVEY FOR J. H. BAXTER COMPANY
SE 1/4 SECTION 21 T21S R4W W.M.
EIMSTAD & ASSOCIATES
1717 WASHINGTON ST. EUGENE
OCTOBER, 1981
SCALE 1 1/2" = 500 FEET

REGISTERED
PROFESSIONAL
LAND SURVEYOR

WILLIAM A. EIMSTAD
MAY 4, 1959
37

COUNTY SURVEYORS FILE DATA
DO NOT REMOVE FROM OFFICE

MAP FILE M 89-25