

BA 7-19 94A

FILED
RECEIVED DLS
OCT 22 1981
COUNTY SURVEYOR
DOUGLAS COUNTY, OREGON

R/W Curve
 $\Delta = 29^{\circ}45'$
 $D = 19.09859'$
 $R = 300$
 $T = 79.68$
 $L.C. = 154.02$
 $L = 155.77$

Basis of Bearings are
 5/8" iron Rods set by
 Ware in Survey M70-54

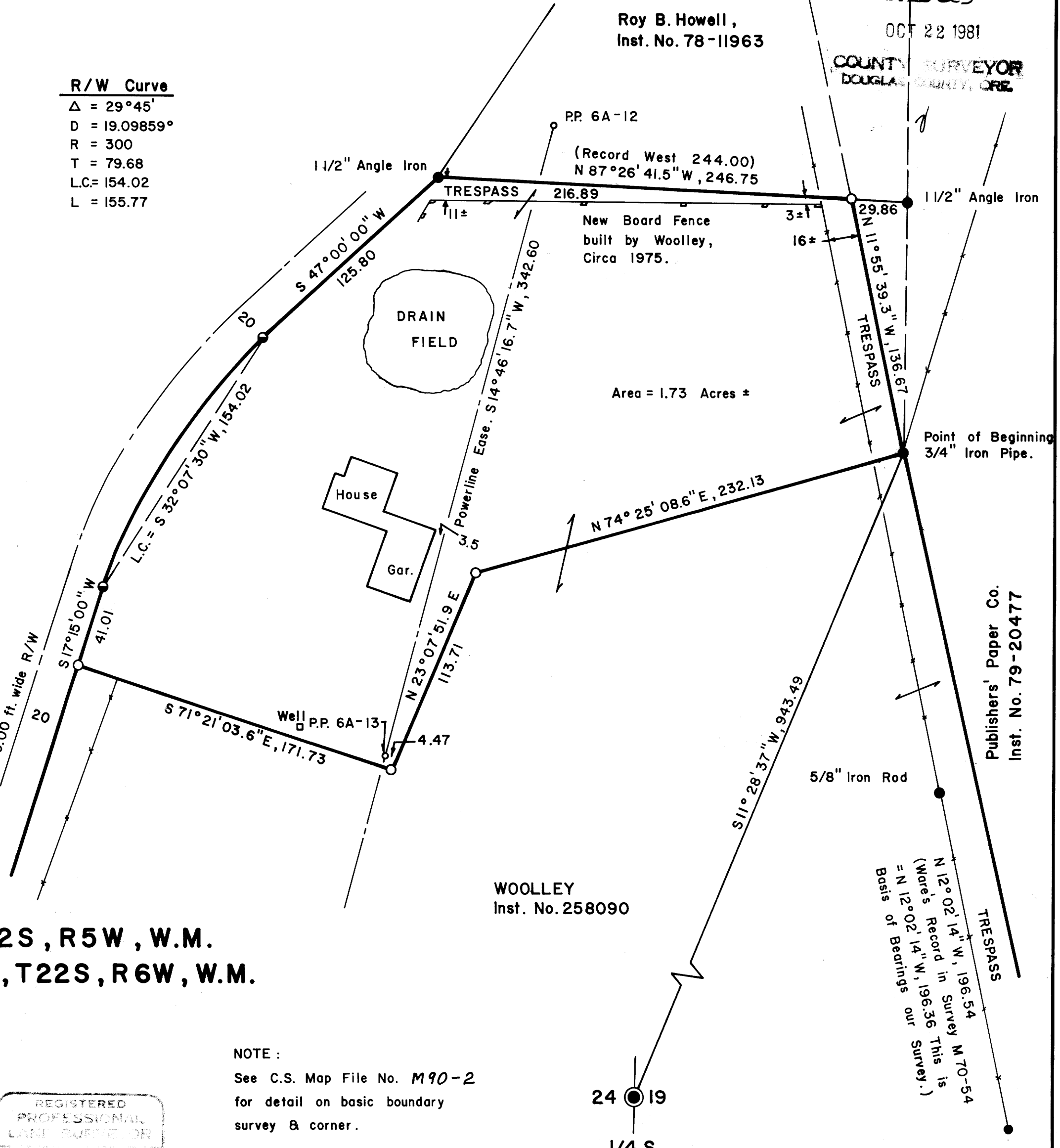


Scale 1" = 50'

LEGEND

- Corner found
- Corner found
- Set 5/8" Iron Rod (36" lgt.)
- Corner computed, not set
- Woolley Property Line

Douglas County Hayhurst Road
 No. 24, Centerline of 40.00 ft. wide R/W



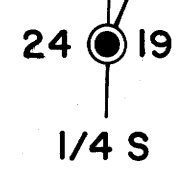
**MINOR LAND PARTITION
 IN THE NW 1/4 OF SEC. 19, T22S, R5W, W.M.
 & IN THE NE 1/4 OF SEC. 24, T22S, R6W, W.M.
 DOUGLAS COUNTY, OREGON**

September, 1981

Page 1 of 2

NOTE:
 See C.S. Map File No. M90-2
 for detail on basic boundary
 survey & corner.

REGISTERED
 PROFESSIONAL
 LAND SURVEYOR
 BA Shaner



Woolley Property Line
 TRESPASS
 5/8" Iron Rod
 N 12°02'14"W, 196.54
 (Ware's Record in Survey M70-54
 = N 12°02'14"W, 196.36 This is
 Basis of Bearings our Survey.)

Publishers' Paper Co.
 Inst. No. 79-20477

COUNTY SURVEYORS FILE DATA
 DO NOT REMOVE FROM OFFICE

MAP FILE M89-23A