

COUNTY SURVEYORS FILE DATA  
DO NOT REMOVE FROM OFFICE

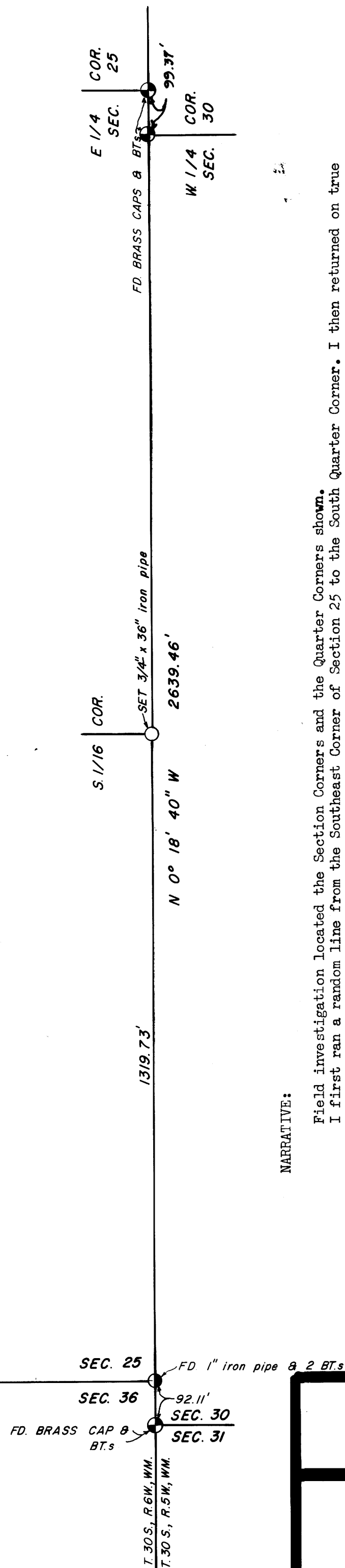
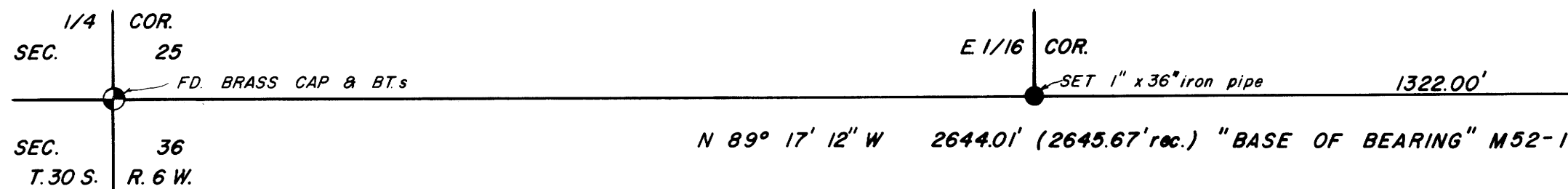
# SECTION LINE SURVEY

LOCATED IN: S. E. 1/4, SECTION 25,  
TOWNSHIP 30 SOUTH, RANGE 6 WEST,  
WILLAMETTE MERIDIAN, DOUGLAS COUNTY, OREGON.

PREPARED FOR: MIKE SWETT  
RT. 1 BOX 92 - B  
RIDDLE, OREG. 97469



JULY 22, 1981  
SCALE 1" = 200'



**NARRATIVE:**

Field investigation located the Section Corners and the Quarter Corners shown. I first ran a random line from the Southeast Corner of Section 25 to the South Quarter Corner. I then returned on true line and set or found the following corners.  
At 1322.01 feet I set a 1 inch by 36 inch iron pipe ( East 1/16 Corner ).  
At 2644.01 feet or 1322.00 feet further, I found said Southeast Corner to Section 25.  
This line was used as my " Base of Bearing ", and bears South 89° 17' 12" East ( SEE M 52- 1 ).  
I now set at the said Southeast Corner of Section 25 and run Due North on a random line to the East Quarter Corner of Section 25. I then returned on the true line that bears South 0° 18' 40" East and set or found the following corners.  
At 1319.73 feet I set a 3/4 inch by 36 inch iron pipe ( South 1/16 Corner ).  
At 2639.46 feet or 1319.73 feet further, I find said Southeast Corner to Section 25.

FILED  
RECEIVED  
OCT 12 1981

COUNTY SURVEYOR  
DOUGLAS COUNTY, OREG.

JOHN H. MARKHAM JR.  
OSPE & RPLS  
MYRTLE CREEK, OREG.  
ph. 863-4590

DRAWN BY  
RAYMOND F. BROWN  
P.O. BOX 539  
CANYONVILLE, OREG.  
ph. 839-6185

REGISTERED  
PROFESSIONAL  
LAND SURVEYOR

OREGON  
SEPTEMBER 23, 1977  
JOHN H. MARKHAM, JR.  
1261