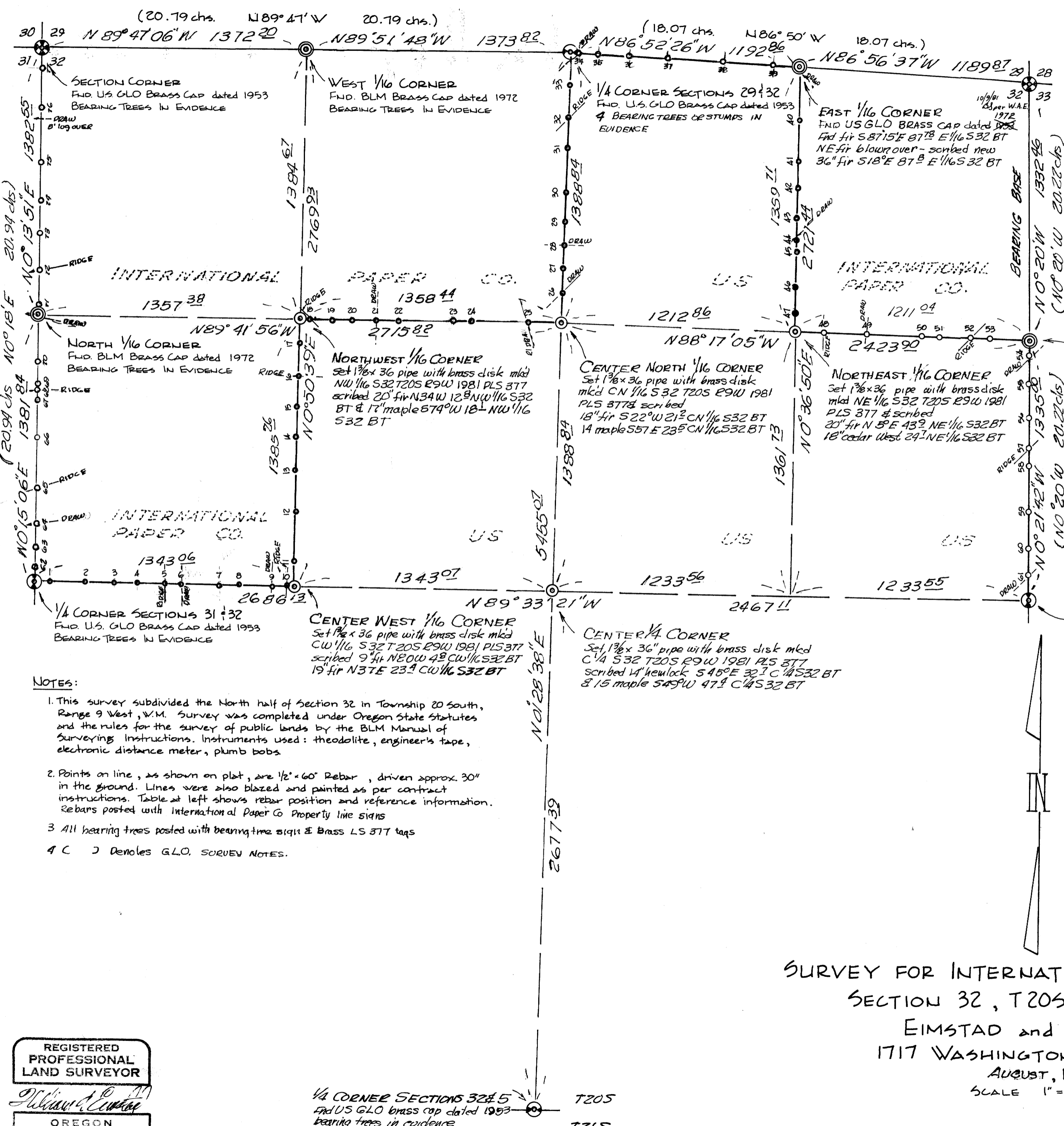


FILED
RECEIVED
OCT 1 1981
COUNTY SURVEYOR
DOUGLAS COUNTY, ORE.

MAP FILE M89-13

POINT-REFERENCE-DISTANCE

1/4 CORNER SECTIONS 31 and 32		
*1 - FIR	N 60° E	9.5
*2 - FIR	S 67° E	12.1
*3 - FIR	N 70° E	7.1
*4 - FIR	N 03° E	6.2
*5 - FIR	N 73° E	13.2
*6 - FIR	S 22° W	15.2
*7 - MAPLE	N 32° W	6.1
*8 - FIR	S 53° E	5.2
*9 - ALDER	N 03° W	17.2
*10 - MAPLE	S 07° W	2.1
CENTER WEST 1/16 CORNER		
*11 - FIR	S 85° E	14.0
*12 - FIR	S 31° W	2.2
*13 - MAPLE	N 44° E	15.2
*14 - FIR	S 34° E	11.2
*15 - FIR	S 40° W	6.2
*16 - FIR	S 71° E	7.8
*17 - ALDER	S 60° E	6.6
NORTHWEST 1/16 CORNER		
*18 - CEDAR	N 46° E	8.2
*19 - CEDAR	N 45° W	24.3
*20 - ALDER	SOUTH	2.1
*21 - FIR	N 65° E	54.4
*22 - CEDAR	S 46° W	23.2
*23 - FIR	N 80° W	41.1
*24 - MAPLE	N 78° W	29.1
*25 - FIR	N 75° E	6.2
CENTER NORTH 1/16 CORNER		
*26 - HEMLOCK	N 46° W	24.2
*27 - FIR	N 78° E	8.2
*28 - FIR	N 38° E	19.2
*29 - MAPLE	S 63° E	7.1
*30 - FIR	N 45° E	6.2
*31 - ALDER	N 06° E	36.4
*32 - HEMLOCK	N 32° E	16.1
*33 - HEMLOCK	S 47° E	29.2
1/4 CORNER SECTIONS 29 and 32		
*34 - FIR	S 11° W	70.2
*35 - MAPLE	S 63° E	22.1
*36 - ALDER	S 88° W	67.2
*37 - MAPLE	S 05° E	12.2
*38 - FIR	S 06° W	8.2
*39 - FIR	N 07° W	5.1
EAST 1/16 CORNER SECTIONS 29 and 32		
*40 - HEMLOCK	N 21° W	8.2
*41 - FIR	N 37° W	10.2
*42 - MAPLE	S 32° W	16.1
*43 - MAPLE	N 04° W	32.1
*44 - ALDER	N 20° W	56.2
*45 - ALDER	S 70° W	18.2
*46 - ALDER	S 70° W	32.2
*47 - FIR	WEST	4.2
NORTHEAST 1/16 CORNER		
*48 - FIR	S 26° W	8.2
*49 - ALDER	S 47° W	8.2
*50 - HEMLOCK	S 05° E	8.2
*51 - FIR	S 24° E	24.2
*52 - FIR	N 42° E	10.2
*53 - FIR	N 40° W	1.2
NORTH 1/16 CORNER SECTIONS 32 and 33		
*54 - FIR	N 27° E	47.2
*55 - HEMLOCK	N 83° W	27.2
*56 - HEMLOCK	S 88° E	13.2
*57 - HEMLOCK	N 30° E	10.2
*58 - HEMLOCK	N 65° E	9.2
*59 - ALDER	NORTH	8.2
*60 - CEDAR	N 33° E	39.2
*61 - MAPLE	N 33° E	17.2
1/4 CORNER SECTIONS 32 and 33		
*62 - FIR	N 72° W	8.1
*63 - FIR	N 1° W	8.2
*64 - FIR	N 43° W	13.1
*65 - HEMLOCK	N 43° W	11.2
*66 - FIR	N 30° W	25.2
*67 - FIR	N 76° W	13.2
*68 - FIR	S 86° E	9.2
*69 - FIR	S 54° E	14.2
*70 - MAPLE	S 45° E	2.2
NORTH 1/16 SECTIONS 31 & 32		
*71 - HEMLOCK	N 39° W	14.2
*72 - ALDER	N 78° W	9.1
*73 - FIR	N 88° W	2.2
*74 - CEDAR	N 82° E	15.2
*75 - MAPLE	N 26° E	25.2
*76 - MAPLE	N 20° W	24.2
*77 - MAPLE	N 70° W	35.2
CORNER SECTIONS 29, 30, 31 & 32		



NOTES:
 1. This survey subdivided the North half of Section 32 in Township 20 South, Range 9 West, W.M. Survey was completed under Oregon State statutes and the rules for the survey of public lands by the BLM Manual of Surveying Instructions. Instruments used: theodolite, engineer's tape, electronic distance meter, plumb bobs.
 2. Points on line, as shown on plat, are 1/2" x 60" Rebar, driven approx 30" in the ground. Lines were also blazed and painted as per contract instructions. Table at left shows rebar position and reference information. Rebars posted with International Paper Co Property line signs.
 3. All bearing trees posted with bearing tree sign & Brass LS 377 tags.
 4. C J Denotes G.L.O. SURVEY NOTES.

REGISTERED
PROFESSIONAL
LAND SURVEYOR
William A. Eimstad
OREGON
MAY 6, 1958
WILLIAM A. EIMSTAD
377

SURVEY FOR INTERNATIONAL PAPER COMPANY
SECTION 32, T20S, R9W, W.M.
EIMSTAD and ASSOCIATES
1717 WASHINGTON ST., EUGENE
AUGUST, 1981
SCALE 1" = 400 feet

COUNTY SURVEYORS FILE DATA
DO NOT REMOVE FROM OFFICE

MAP FILE M89-13