

COUNTY SURVEYORS FILE DATA
DO NOT REMOVE FROM OFFICE

FILED
RECEIVED

SEP 30 1981

COUNTY SURVEYOR
DOUGLAS COUNTY, ORE

SURVEY IN SECTION 24 &
S 1/2 OF SECTION 23, T24S,
R6W, W.M.

FOR: BILL WOODS

BY: BHW ENGINEERING & SURVEYING
1205 S.E. COURT-ROSEBURG, ORE.

SCALE: 1" = 600'
SEPTEMBER 1981

NARRATIVE:

SURVEY FOR THE PURPOSE OF MONUMENTING 1/16
CORNERS AS SHOWN AND THE S.E. CORNER OF
SECTION 24. MONUMENTS SET 412.50 FEET
NORTHERLY OF 1/16 CORNERS WERE SET AS
DIRECTED BY BILL WOODS.

FIELD CREW: R. QUIMBY & M. RADCLIFFE.
EQUIPMENT: WILD T-1 THEODOLITE
MOUNTED W/ RED-1 E.D.M.
OFFICE COMPUTATIONS & DRAFTING:
R. WARE & D. HOPKINS.

REGISTERED
PROFESSIONAL
LAND SURVEYOR

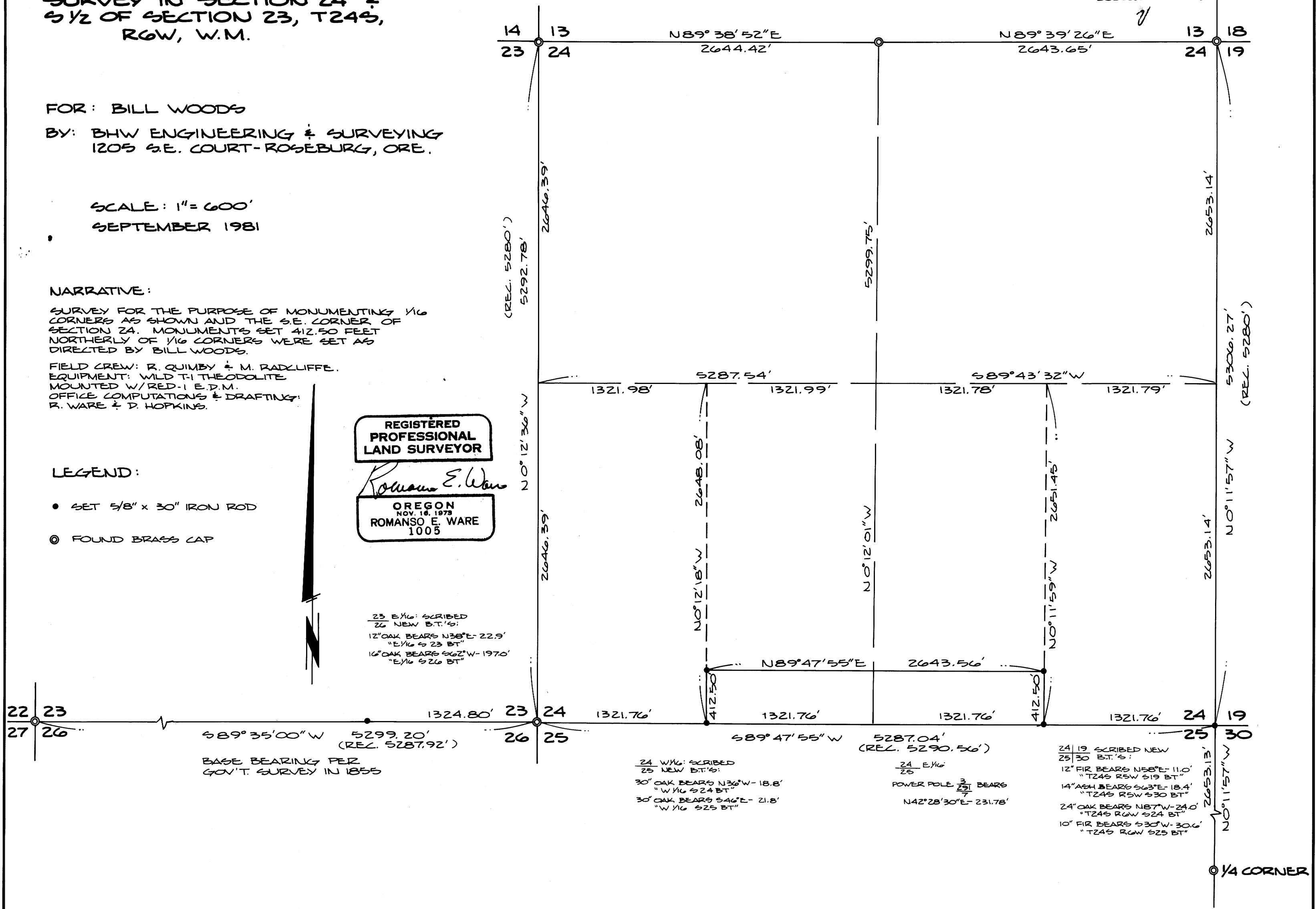
Romano E. Ware

OREGON
NOV. 18, 1973
ROMANSO E. WARE
1005

LEGEND:

- SET 5/8" x 30" IRON ROD
- ⊙ FOUND BRASS CAP

23 E 1/16: SCRIBED
26 NEW B.T.'S:
12" OAK BEARS N38°E-22.9'
"E 1/16 S 23 BT"
16" OAK BEARS S62°W-197.0'
"E 1/16 S 26 BT"



MAP FILE M89-12

MAP FILE M89-12