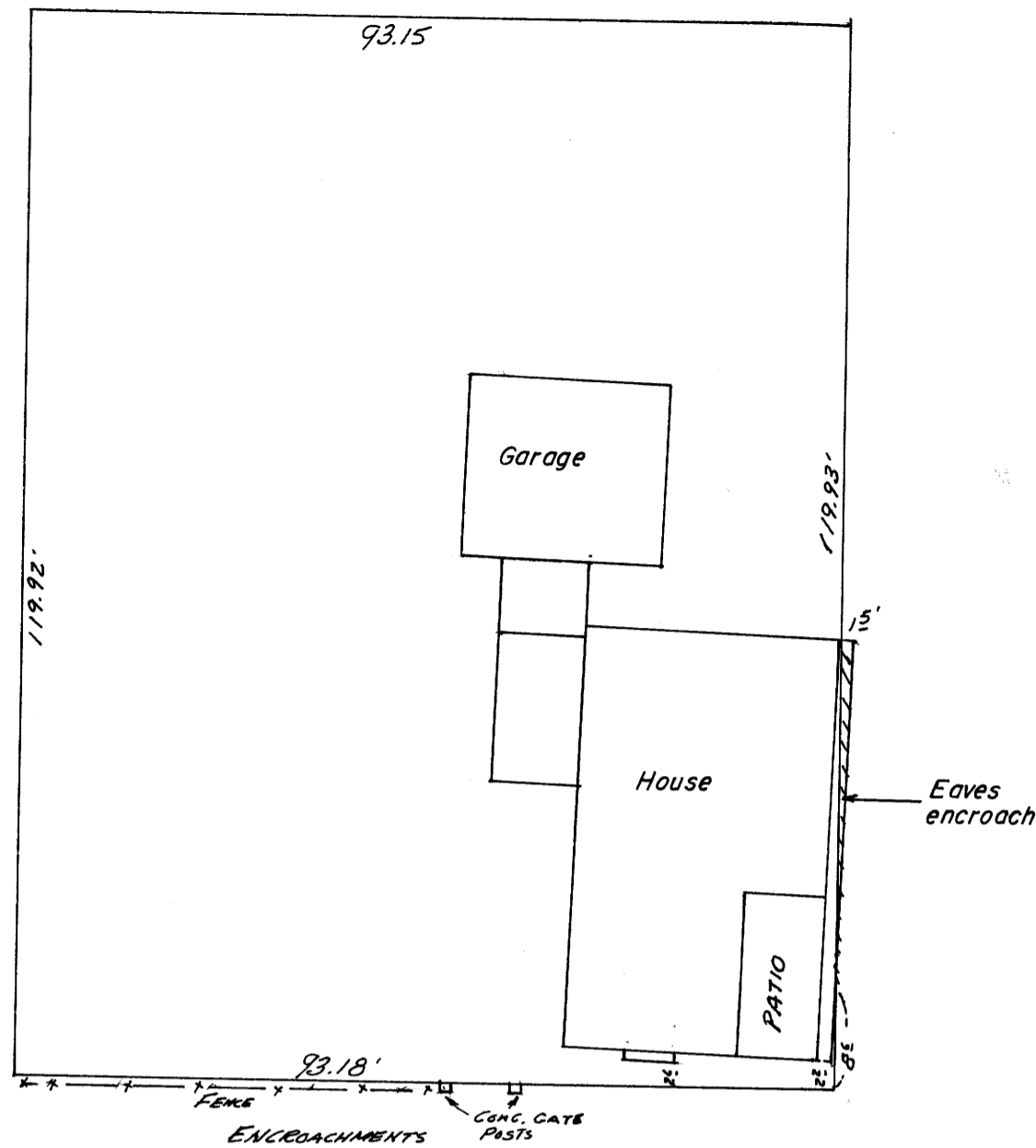


DETAIL "A" SCALE: 1" = 20'



LEGEND

- — Set 5/8" x 30" iron rod
- — Found point, as noted
- () — Record calls

SURVEY FOR PROPERTY CORNERS

COUNTY SURVEYORS FILE DATA
DO NOT REMOVE FROM OFFICE

IN THE NE 1/4 SECTION 36 T.26S. R.6W. W.M. - LOTS 15 & 16 BLK. 1
TAFT ADDITION — SEPTEMBER 1981 — SCALE: 1" = 40'

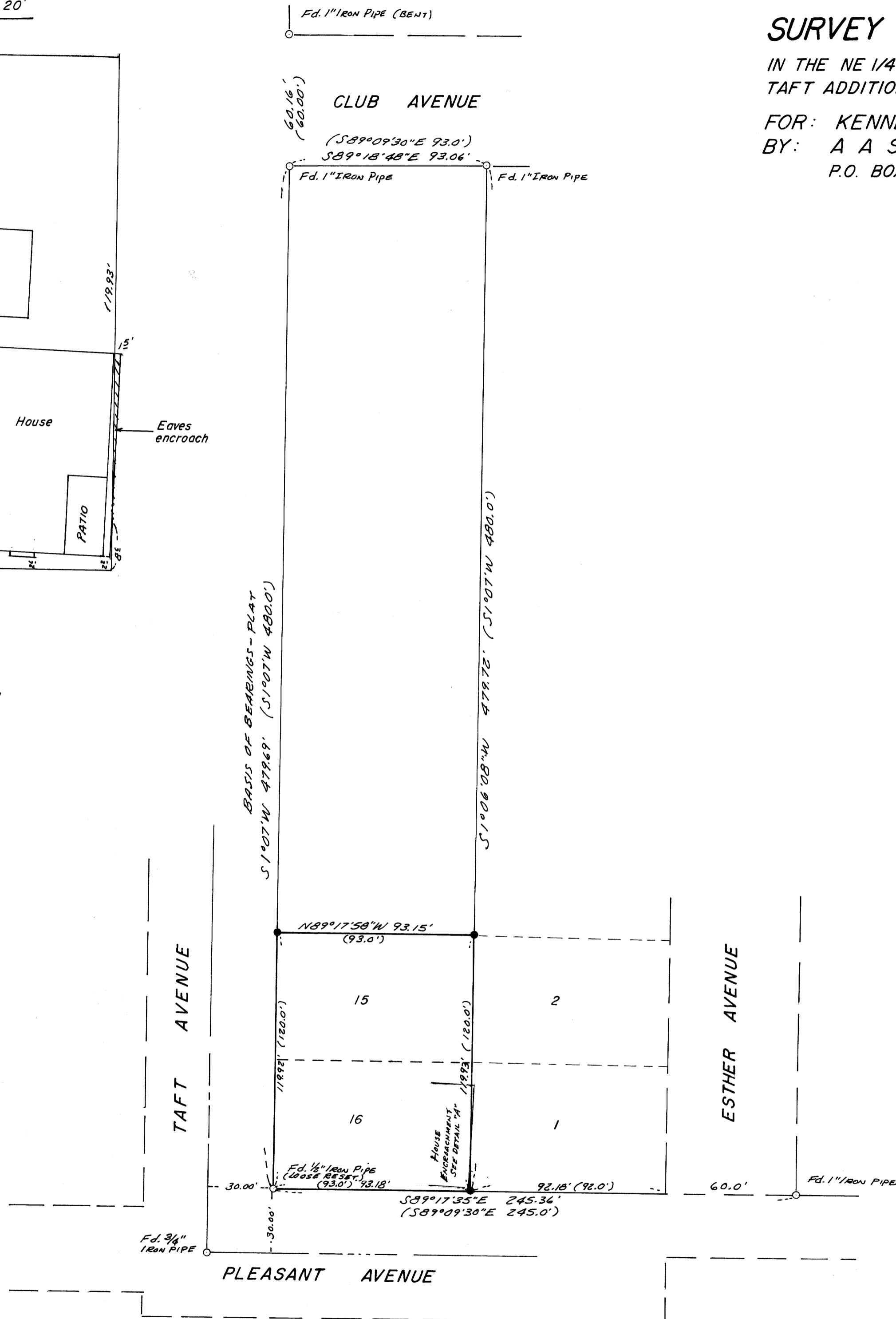
FOR: KENNETH TYMN
BY: A A SURVEYING SERVICE INC.
P.O. BOX 130, ROSEBURG, ORE. 97470

FILED 1
RECEIVED BS

SEP 9 1981

COUNTY SURVEYOR
DOUGLAS COUNTY, ORE.

1



NARRATIVE

PURPOSE:

To locate and set missing lot corners.

PROCEDURE:

Using the found points shown hereon, I set the missing lot corners by proportioned measurement.

REGISTERED
PROFESSIONAL
LAND SURVEYOR

Eugene A. Bloom
OREGON
MAY 13, 1969
EUGENE A. BLOOM
492

MAP FILE M 88-71

MAP FILE M 88-71