

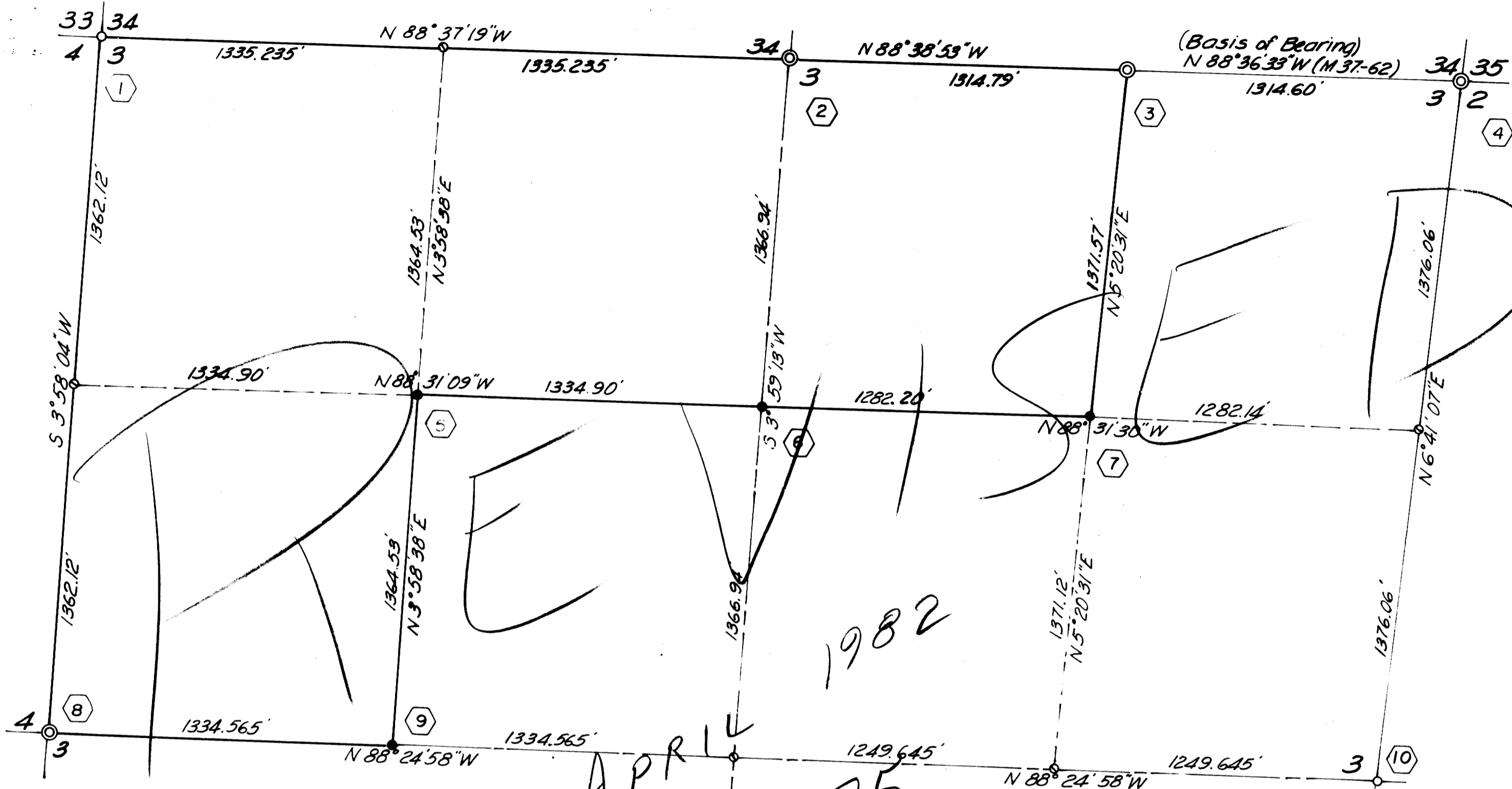
SURVEY OF SECTION 3

T. 31 S. R. 6 W. W. M.

AUGUST, 1981

FOR: CARNAHAN FORESTRY, INC.
P. O. BOX 1624
ROSEBURG, OREGON 97470

BY: BAUGHMAN TECHNICAL SERVICES, INC.
P. O. BOX 222
ROSEBURG, OREGON 97470
673-0966



SURVEY NARRATIVE:

The North boundary of Section 3 of T. 31 S., R. 6 W., W. M., was originally surveyed by Addison R. Flint, U. S. Deputy Surveyor, under Contract No. 56 in 1855. The South, East and West boundaries were surveyed by William H. Byars, U. S. Deputy Surveyor, under Contract No. 448 in 1882. The North, South, East and West 1/4 Section Corners and the Northwest Section Corner are original G. L. O. corners perpetuated in their original positions. The North 1/4 Section Corner was perpetuated by James Byron, Deputy County Surveyor in 1960, (C. S. File No. 52/25), and also visited by Byron in 1969, (M37-62). The South 1/4 Section Corner was perpetuated by George Wenderoth, Deputy County Surveyor in 1960, (C. S. File No. 49/92), and again in 1966 by John Powell, Deputy County Surveyor, (C. S. File No. 54/31). The East 1/4 Section Corner was perpetuated by John H. Markham, Jr., O. P. E. 2880, in 1949, (C. S. File No. 40/233), and again by John Powell, Deputy County Surveyor in 1966, (C. S. File No. 54/31). The West 1/4 Section Corner and the Northwest Section Corner was perpetuated by James Byron, Deputy County Surveyor in 1960, (C. S. File No. 52/25). The Northeast Section Corner was re-established by single proportionate measurement and the East 1/16 Section Corner on the North line was set by James Byron, County Surveyor, in 1969, (M37-62). This Section Corner was perpetuated by Gregory Quiball, Deputy County Surveyor, in 1981, (C. S. File No. 61/19).

The purpose of the survey was to monument the corners and mark the boundaries of the NW 1/4 NE 1/4, NE 1/4 NW 1/4, NW 1/4 NW 1/4 and SW 1/4 NW 1/4 of Section 3. A closed loop random line traverse was run between all found corner points. Using these corner positions, the section was subdivided as per the U. S. B. L. M. Manual of Surveying Instructions, 1973 and the laws of the State of Oregon. Angles were measured with a Lietz TM 20-C theodolite and distances were measured with a Precision International Beetle 1000 E. D. M. and a 300 foot steel tape. Property lines were blazed and posted with steel fence posts set so as to be intervisible.

LEGEND

- — Set 5/8" x 30" IR.
- ⊙ — Fd. Brass Cap
- — Fd. 3/4" I.P.
- — Point Calculated - Not Set
- ⬡ — Corner Index Number

Scale: 1" = 400'

CORNER DESCRIPTIONS:

1. Fd. 3/4" iron pipe, firmly set, from which:
 - a 14" laurel snag bears N. 74° E. 46.5 ft.
 - a 14" windfallen laurel bears N. 35° W. 29.0 ft.
 - a 9" fir stub bears S. 2° E., 79.2 ft.
 - a 10" white oak bears S. 10° W., 97.4 ft.
2. Fd. 1" iron pipe, firmly set, with a 2 1/2" brass cap marked:
 - COUNTY SURVEYOR'S OFFICE
 - T30S R6W
 - 1/4 S34
 - S3
 - T31S R6W
 - 1960
 from which:
 - a 26" Douglas fir bears N. 89 1/2° W., 20.0 ft.
 - a 12" maple bears S. 9° W., 51.0 ft.

3. Fd. 1" iron pipe, firmly set with a 2 1/2" brass cap marked: COUNTY SURVEYORS OFFICE
T30S R E 1/16 S34 S3 T31S 1969

from which:
a 18" Douglas fir bears S. 30° E., 18.6 ft.
a 18" laurel bears N. 37 1/2° E., 17.0 ft.

4. Fd. 1" iron pipe, firmly set with a 2 1/2" brass cap marked: COUNTY SURVEYORS OFFICE
T30S R6W S34 S35 S3 S2 T31S R6W

from which:
a 23" oak bears S. 36 1/2° E., 70.0 ft.
a 12" cedar bears N. 81° W., 37.6 ft.
a 25" Douglas fir bears N. 15° W., 10.7 ft.
a 16" Douglas fir bears S. 25° W., 40.5 ft.
a 9" Douglas fir bears S. 11 1/2° E., 33.8 ft.

5. Set: 5/8" X 30" Iron Rod, 26" in the ground, from which:
a 9" Douglas fir bears N. 19° E., 12.2 ft., scribed "NW 1/16 S3 BT".
a 11" Douglas fir bears S. 58° E., 12.0 ft., scribed "NW 1/16 S3 BT".
a steel fence post is set alongside the iron rod.

6. Set: 5/8" X 30" Iron Rod, 26" in the ground, from which:
a 7" yew bears N. 34° E., 35.1 ft., scribed "CN 1/16 S3 BT".
a 9" Douglas fir bears S. 40° E., 50.0 ft., scribed "CN 1/16 S3 BT".
a steel fence post is set alongside the iron rod.

7. Set: 5/8" X 30" Iron Rod, 26" in the ground, from which:
a 8" Douglas fir bears N. 45° E., 19.4 ft., scribed "NE 1/16 S3 BT".
a 13" Douglas fir bears N. 57° W., 10.2 ft., scribed "NE 1/16 S3 BT".
a steel fence post is set alongside the iron rod.

8. Fd. 1" iron pipe, firmly set, with a 2 1/2" brass cap marked: COUNTY SURVEYORS OFFICE
T31S R6W 1/4 S4 S3 1960

from which:
a 23" rotted fir stump bears N. 58° W., 13.2 ft.
a 25" rotted fir stump bears S. 40° E., 32.3 ft.
a 14" Douglas fir bears S. 19° W., 35.9 ft.
a 24" Douglas fir bears S. 39° E., 35.2 ft.

9. Set: 5/8" X 30" Iron Rod, 26" in the ground, from which:
a 19" Douglas fir bears N. 62° W., 34.8 ft., scribed "CW 1/16 S3 BT".
a 9" Douglas fir bears S. 22° W., 9.2 ft., scribed "CW 1/16 S3 BT".
a steel fence post is set alongside iron rod.

10. Fd. 3/4" iron pipe, firmly set, from which:
a 40" laurel stump bears S. 68° W., 53.0 ft.
a 28" laurel bears N. 67° E. 33.0 ft.
a 7" Douglas fir snag bears S. 68° E., 10.2 ft.
a 10" Douglas fir snag bears S. 38° W., 29.2 ft.

11. Fd. 1" iron pipe, firmly set, with a 2 1/2" brass cap marked: COUNTY SURVEYORS OFFICE
T31S R6W 1/4 S3 S10 1966

from which:
a 10" yew bears N. 55 1/2° E., 36.5 ft.
a 22" Douglas fir bears N. 82° E., 65.0 ft.

REGISTERED PROFESSIONAL LAND SURVEYOR
GEORGE E. GRUBB
397

MAP FILE M288-47

CATL