

COUNTY SURVEYORS FILE ROOM
DO NOT REMOVE FROM OFFICE

FILED ✓
RECEIVED ✓

AUG 28 1981

COUNTY SURVEYOR
DOUGLAS COUNTY, ORE.

21-04-26 T.L. 502

SURVEY FOR
LES CHAPMAN

NE 1/4 > SECTION 26, T21S, R4W, WM
NW 1/4 >

SCALE 1"=400' ± AUGUST 12, 1981

LANE COUNTY, OREGON
DOUGLAS COUNTY, OREGON

BEARINGS BASED UPON SOLAR OBSERVATION

NARRATIVE:

THIS SURVEY WAS TO SET THE NORTH 1/4 CORNER OF SECTION 26, T21S, R4W, WM. WE SET THE SAID 1/4 COR AT A PROPORTIONAL DISTANCE FROM THE EXISTING MONUMENTED NE & NW SECTION CORNERS. FROM THIS PROPORTIONED POSITION, WE FOUND A 1/2" IRON PIPE WITH A "T" ON TOP, 32" HIGH MARKING GILBERT GARDNER'S POSITION (SEE C.S. FILE No. 42/131, DOUGLAS COUNTY, & ROLL FILE D-412, LANE COUNTY). THIS PIPE BEARS N 29° 02' 26" W 81.26 FT FROM OUR PROPORTIONED POSITION.

AT A POINT WHICH BEARS N 24° 15' W 57.1 FT FROM OUR PROPORTIONED POSITION, I FOUND AN OLD ROTTED FIR STUMP WITH AN AXE MARK (NO SCRIBE IRON MARKS) ON A ONE INCH STRIP OF PRESERVED WOOD. THIS STUMP MIGHT HAVE BEEN THE ORIGINAL FIR B.T. DESCRIBED AS N 8° E 45 Iks. ALSO, AT A POINT WHICH BEARS S 52° 20' W 44.4 FT FROM OUR PROPORTIONED POSITION, I FOUND TWO MAPLES (14" & 16") WHICH APPEAR TO HAVE GROWN UP AROUND AN OLD TREE WHICH COULD HAVE BEEN THE ORIGINAL MAPLE B.T. DESCRIBED AS S 20° W 52 Iks.

I DID NOT ACCEPT EITHER OF THESE AS CIRCUMSTANTIAL EVIDENCE BECAUSE THEY WERE ABOUT 18 FT TOO FAR APART, AND THE BEARINGS AND DISTANCES OF RECORD WOULD NOT FIT BOTH FROM ONE POSITION.

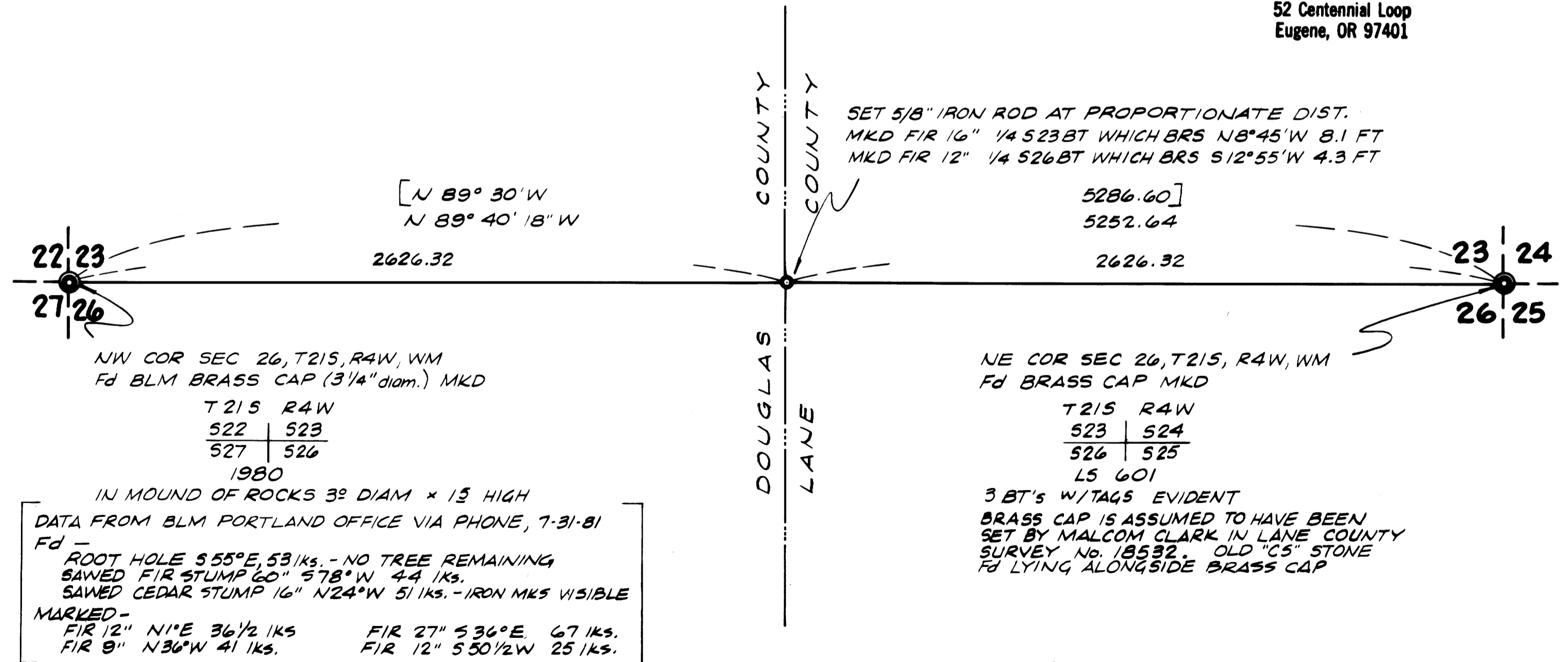
○ ~ SET 5/8" IRON ROD
[] ~ RECORD DATA

REGISTERED
PROFESSIONAL
LAND SURVEYOR

Charles W. Guile

OREGON
MAY 6, 1980
CHARLES W. GUILÉ
472

CHARLES W. GUILÉ
& ASSOCIATES, CO.
Land Surveying
52 Centennial Loop
Eugene, OR 97401



NW COR SEC 26, T21S, R4W, WM
Fd BLM BRASS CAP (3 1/4" diam.) MKD

T 21 S	R 4 W
522	523
527	526

1980

IN MOUND OF ROCKS 3" DIAM x 15 HIGH

DATA FROM BLM PORTLAND OFFICE VIA PHONE, 7-31-81

Fd -
ROOT HOLE S 55° E, 53 Iks. - NO TREE REMAINING
SAWED FIR STUMP 60" S 78° W 44 Iks.
SAWED CEDAR STUMP 16" N 24° W 51 Iks. - IRON MKS VISIBLE

MARKED -
FIR 12" N 1° E 36 1/2 Iks. FIR 27" S 36° E. 67 Iks.
FIR 9" N 36° W 41 Iks. FIR 12" S 50 1/2 W 25 Iks.

MAP FILE M88-64

MAP FILE M88-64