

COUNTY SURVEYORS FILE DATA  
DO NOT REMOVE FROM OFFICE

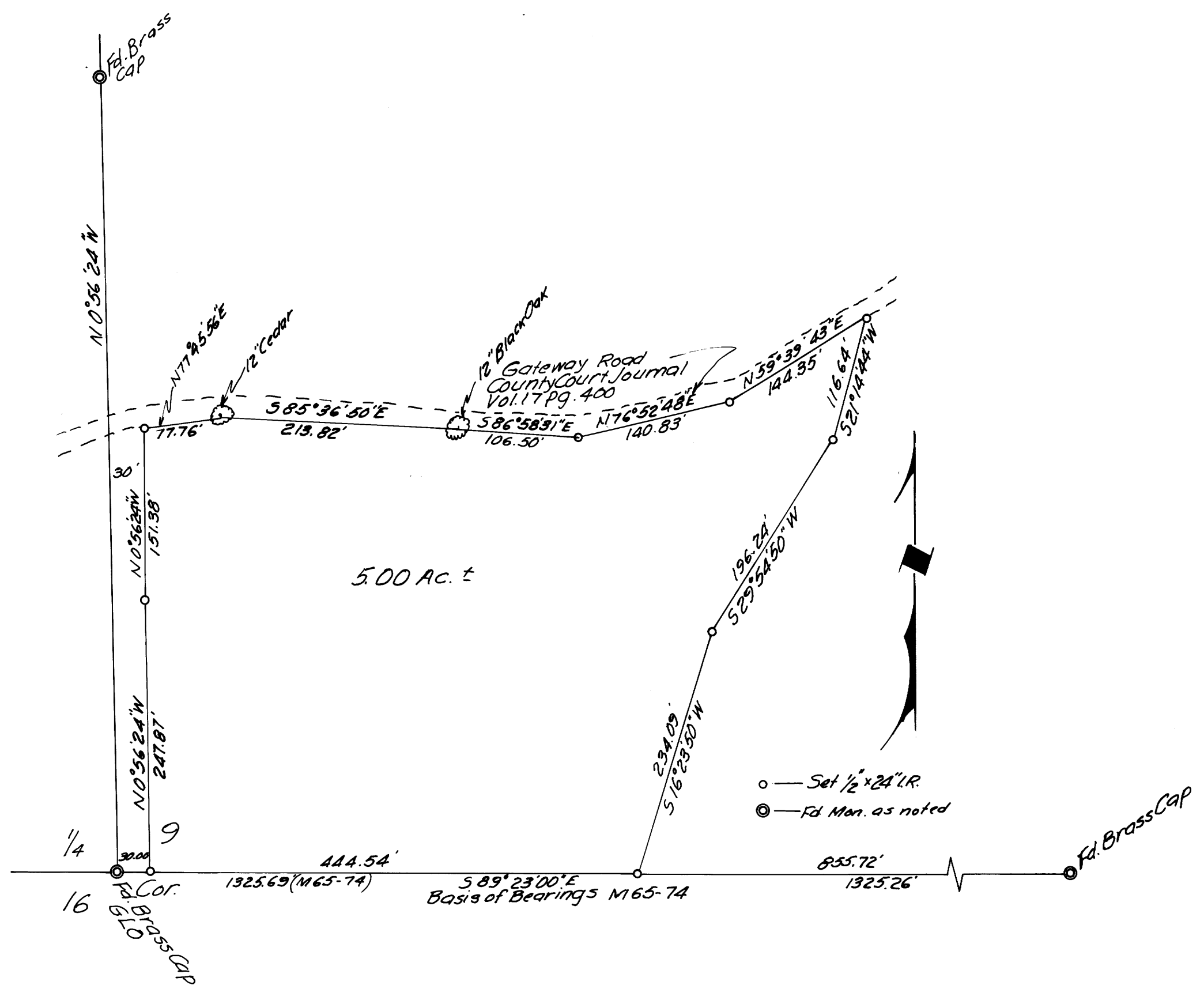
SURVEY FOR DEED DESCRIPTION  
IN THE  
S. E. 1/4, Sec. 9, T. 26 S., R. 3 W., W. M.  
Scale 1" = 100' January 1981

FILED 2  
RECEIVED *jh*  
AUG 25 1981

COUNTY SURVEYOR  
DOUGLAS COUNTY, ORE.

For: Glenn Butler  
By: Baughman Technical Services, Inc.  
P. O. Box 222  
Roseburg, Oregon 97470  
673-0966

Narrative: The purpose of the survey was to monument and describe a five acre parcel as shown hereon. Monuments were found defining the South line and the North-South center-line of Section 9. From these monuments, the perimeter of the parcel was defined. The basis of bearings was the South line of Section 9, shown as S. 89°23'00" E. on M 65-74.



REGISTERED  
PROFESSIONAL  
LAND SURVEYOR

*George E. Grubb*

OREGON  
MAY 10, 1957  
GEORGE E. GRUBB  
397