

# SURVEY FOR EASEMENT

IN SECTION 21, T.28S. R.6W.W.M.— NE 1/4

FOR: DELLARD FIELDS

BY: A A SURVEYING SERVICE INC.

P.O. BOX 130, ROSEBURG, OR. 97470

FILED ✓  
RECEIVED ✓

AUG 20 1981

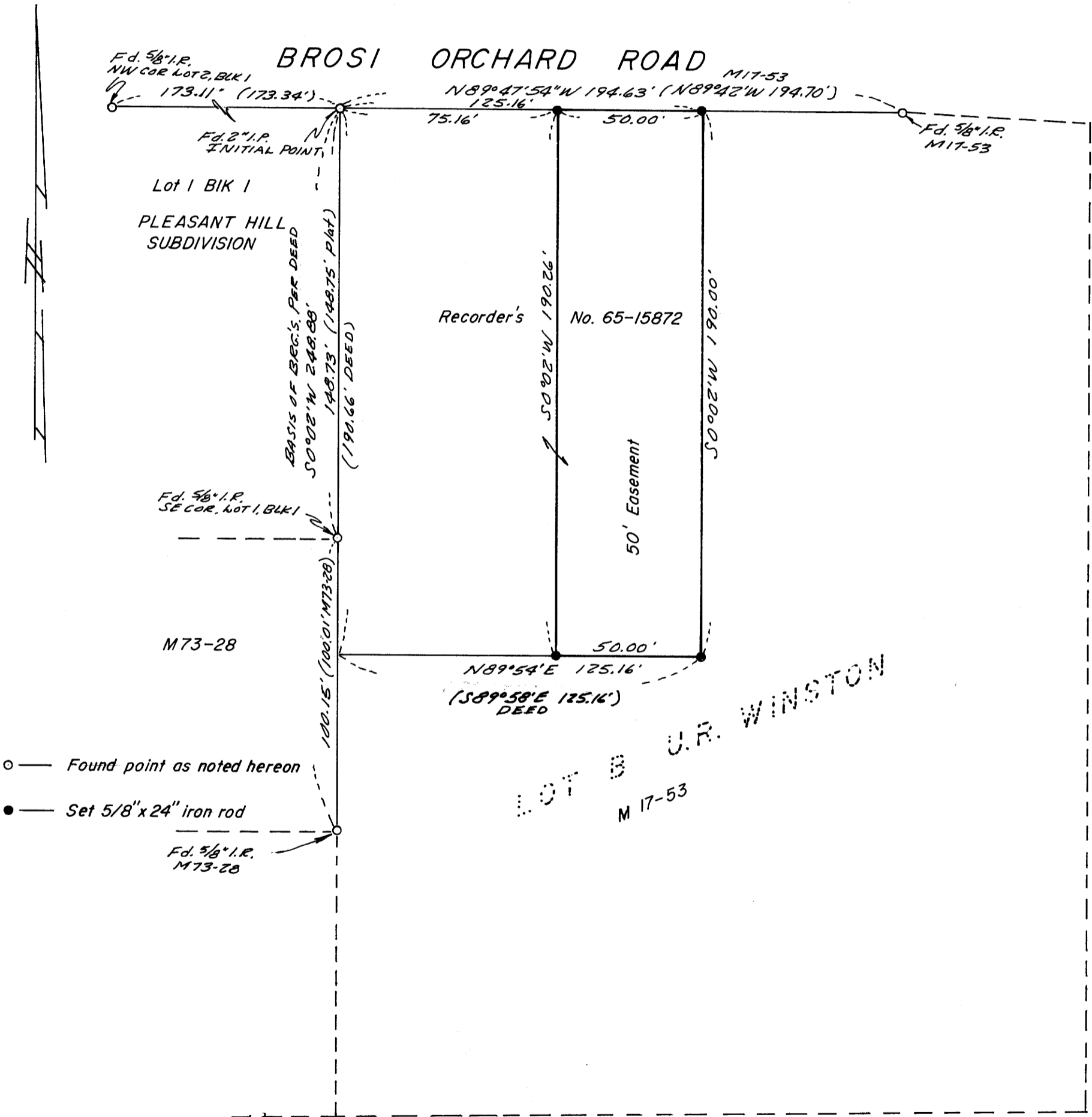
COUNTY SURVEYOR  
DOUGLAS COUNTY, ORE.

AUGUST 1981 SCALE: 1" = 40'  
COUNTY SURVEYORS FILE DATA  
DO NOT REMOVE FROM OFFICE

### NARRATIVE

Purpose: To create a 50 foot easement for ingress, egress and utility purposes.

Procedure: I found the monuments as shown on the annexed map. I set the monuments on the south line of Brosi Orchard Road, as shown. I then made the East line of the subject property parallel with the West property line and set the SE corner according to Deed distance. The SW corner was set by establishing the south line from the Deed distance along the West line and calculating an inverse between the SW and SE corners.



REGISTERED  
PROFESSIONAL  
LAND SURVEYOR

*Eugene A. Bloom*

OREGON  
MAY 13, 1960  
EUGENE A. BLOOM  
492