

SURVEY FOR PROPERTY CORNERS

LOT 8 BLOCK 1 GLIDE PLAT "A" NE 1/4 SEC 19 T26S R3WWM

FOR: JEFF STRINGFELLOW

BY: A A SURVEYING SERVICE INC. P.O. BOX 130, ROSEBURG, OR.

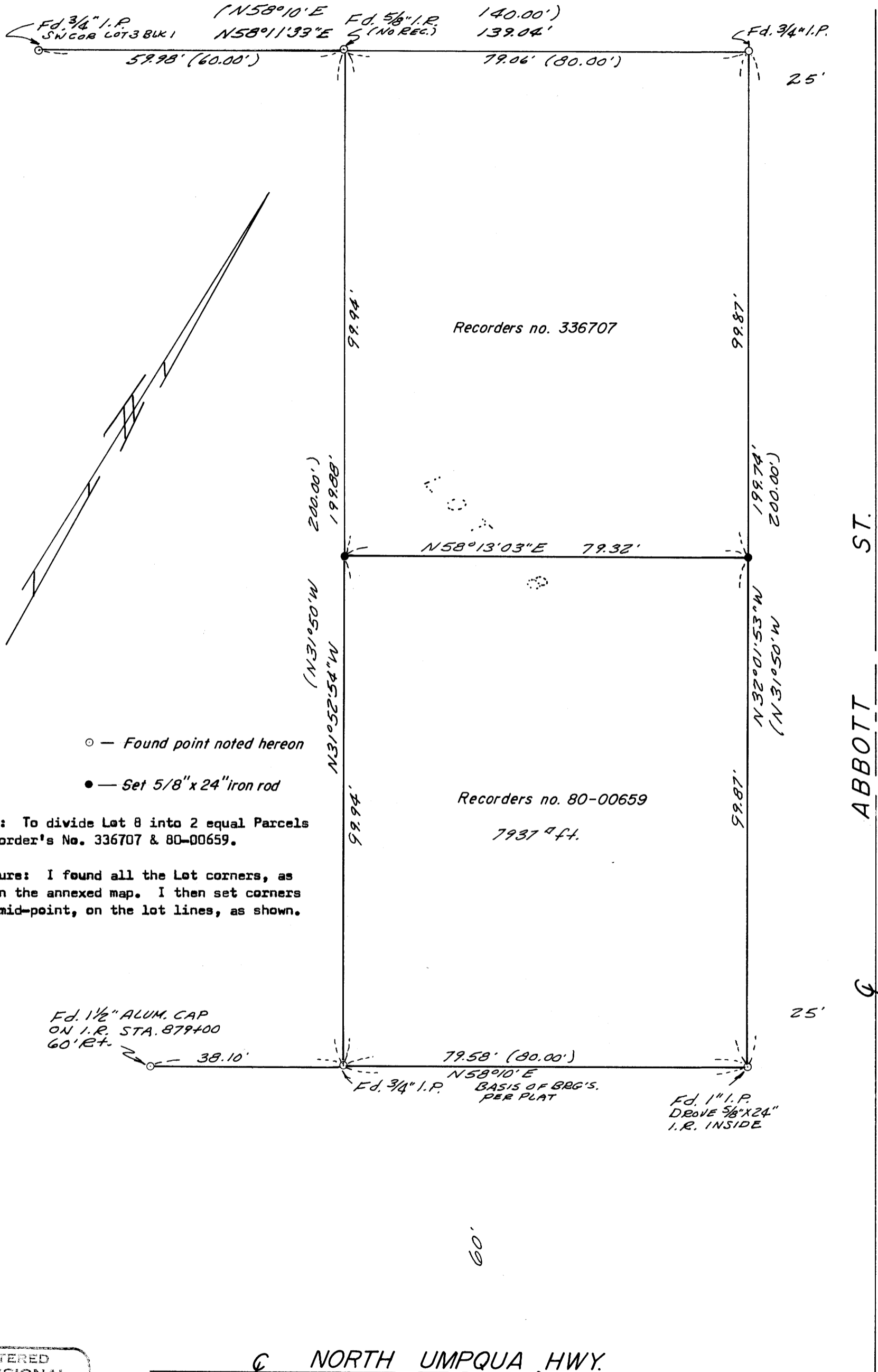
AUGUST 1981

SCALE: 1"=20'

FILED
RECEIVED

AUG 20 1981

COUNTY SURVEYOR
DOUGLAS COUNTY, ORE.



- — Found point noted hereon
- — Set 5/8" x 24" iron rod

NARRATIVE:

Purpose: To divide Lot 8 into 2 equal Parcels per Recorder's No. 336707 & 80-00659.

Procedure: I found all the Lot corners, as shown on the annexed map. I then set corners at the mid-point, on the lot lines, as shown.

REGISTERED
PROFESSIONAL
LAND SURVEYOR

Eugene A. Bloom

OREGON
MAY 13, 1980
EUGENE A. BLOOM
492

COUNTY SURVEYORS FILE DATA
DO NOT REMOVE FROM OFFICE