

A MAJOR LAND PARTITION lying in the West 1/2 of Section 27, Township 26, South, Range 6 West, Willamette Meridian

FILED
RECEIVED

JUL 31 1981

COUNTY SURVEYOR
DOUGLAS COUNTY, ORE.

OWNER & PARTITIONER:
Dennis E. Murphy
808 Southeast Lane
Suite D
ROSEBURG OR 97470

SURVEYOR:
BHW Engineering & Surveying, Inc.
1205 Southeast Court
ROSEBURG OR 97470
673-0165

STATE OF OREGON)
COUNTY OF DOUGLAS) SS.
I, DORIS L. WADSWORTH, COUNTY CLERK
AND RECORDER OF CONVEYANCES, IN AND FOR
SAID COUNTY, DO HEREBY CERTIFY THAT THE
WITHIN INSTRUMENT WAS RECORDED THIS DAY:

REGISTERED
PROFESSIONAL
LAND SURVEYOR

Romano E. Ware

OREGON
NOV. 16, 1978
ROMANSO E. WARE
1008

BY Margaret Seal
DEPUTY
NO. _____ FEE 18.00
DOUGLAS COUNTY OFFICIAL RECORDS

SCALE: 1" = 200'
JULY 1981

COUNTY SURVEYORS FILE DATA
DO NOT REMOVE FROM OFFICE

LEGEND:

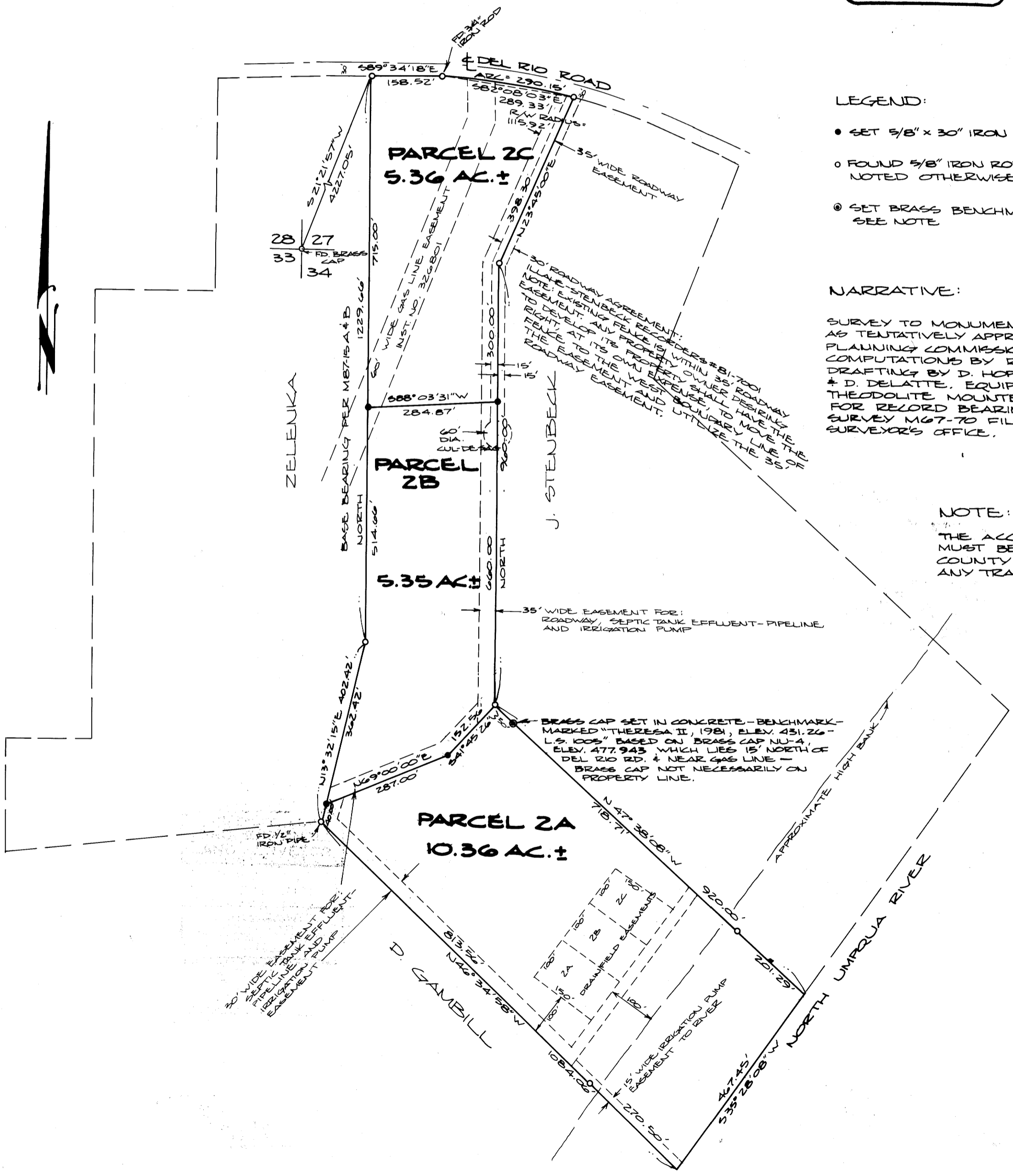
- SET 5/8" x 30" IRON ROD
- FOUND 5/8" IRON ROD UNLESS NOTED OTHERWISE
- ⊙ SET BRASS BENCHMARK - SEE NOTE

NARRATIVE:

SURVEY TO MONUMENT MAJOR LAND PARTITION AS TENTATIVELY APPROVED BY DOUGLAS COUNTY PLANNING COMMISSION ON 6 JULY, 1981. COMPUTATIONS BY R. WARE & D. BENTZ. DRAFTING BY D. HOPKINS. FIELD CREW: G. LANG & D. DELATTE. EQUIPMENT USED: WILD T-1 THEODOLITE MOUNTED WITH RED-1 E.D.M. FOR RECORD BEARINGS & DISTANCES, SEE SURVEY M67-70 FILED IN DOUGLAS COUNTY SURVEYORS OFFICE.

NOTE:

THE ACCESS ROAD EASEMENTS MUST BE RECORDED WITH THE COUNTY CLERK'S OFFICE WITH ANY TRANSFER OF OWNERSHIP.



36-7- Pa 63A