

JUL 22 1981

COUNTY SURVEYOR  
DOUGLAS COUNTY, ORE.

SURVEY OF  
SECTION 12, T21S, R8W, W.M.  
DOUGLAS COUNTY, OREGON  
FOR  
INTERNATIONAL PAPER COMPANY  
BY  
ROBERTS SURVEYING INC.  
29 WEST 29TH STREET  
EUGENE, OREGON 97405  
JUNE 26, 1981

MAP FILE 1188-22

N.W. SECTION CORNER  
FD, 1954 G.L.O. BRASS CAP

- 26" CEDAR, S 72° W, 61.4' (SCRIBE VIS.), 1883 B.T.
- 11" FIR, N 1° E, 5.0' (SCAR VIS.), 1954 B.T.
- 22" HEMLOCK, S 9° E, 23.4' (SCAR VIS.), 1954 B.T.
- 30" FIR, N 44° E, 42.5' (SCAR VIS.), 1954 B.T.

"A" NORTH 1/4 CORNER

- FD, 1954 G.L.O. BRASS CAP
- 36" CEDAR STUMP, N 49 1/2° W, 16.3' (BURNT FACE), 1954 B.T.
- 60" FIR STUMP, S 17 1/2° E, 18.4' (SCRIBE VIS.), 1954 B.T.

"B" WEST 1/4 CORNER

- SET 1 1/2" x 36" IRON PIPE & BRASS CAP
- 18" FIR STUMP, S 55° W, 103.1' (SCRIBED)
- 24" FIR STUMP, N 85° E, 57.0' (SCRIBED)
- 34" FIR STUMP, S 46° E, 98.6' (SCRIBED)

"C" EAST 1/4 CORNER

- FD, 1954 G.L.O. BRASS CAP
- 14" HEMLOCK STUMP, S 76 1/2° W, 14.7' (SCRIBE VIS.), 1954 B.T.

"D" SOUTH 1/16 CORNER

- SET 1 1/2" x 36" IRON PIPE & BRASS CAP
- 9" FIR, N 66° E, 38.3' (SCRIBED)
- 10" FIR, N 7° W, 39.0' (SCRIBED)

"E" S.W. 1/16 CORNER

- SET, 1 1/2" x 36" IRON PIPE & BRASS CAP
- 10" FIR, N 55° E, 42.3' (SCRIBED)
- 14" HEMLOCK, N 37° W, 63.4' (SCRIBED)

"F" C.S. 1/16 CORNER

- SET, 1 1/2" x 36" IRON PIPE & BRASS CAP
- 18" FIR STUMP, N 17° E, 58.5' (SCRIBED)
- 36" CEDAR STUMP, S 67° E, 22.6' (SCRIBED)

"G" WEST 1/16 CORNER

- SET, 1 1/2" x 36" IRON PIPE & BRASS CAP
- 5" HEMLOCK, S 35° E, 5.0' (SCRIBED)
- 6" FIR, N 55° W, 38.2' (SCRIBED)

"H" SOUTH 1/4 CORNER

- FD, 1954 G.L.O. BRASS CAP
- 13" CEDAR, S 40° W, 28.6' (SCAR VIS.), 1954 B.T.
- 27" HEMLOCK, N 38 1/2° E, 32.0' (SCRIBE VIS.), 1954 B.T.

LEGEND

- CORNERS FOUND AND USED FOR CONTROL
- CORNERS SET
- LINES MARKED WITH RED PAINTED BLAZES, 1/2" x 60" IRON RODS AND RED RIBBON
- ( ) DATA OF RECORD, G.L.O.
- BASIS OF BEARING, SOLAR OBSERVATION
- DISTANCE TO BEARING TREES ARE CENTER MEASURE
- ALL BEARING TREES ARE SCRIBED
- SCALE 1" = 400'

LOCATION OF 1/2" IRON RODS

S 1/4 COR.	WEST	S 1/16 COR.	EAST
S 12-2	204'	N 12-2	336'
S 12-4	317'	N 12-3	517'
S 12-5	571'	N 12-4	689'
S 12-7	850'	N 12-5	845'
S 12-8	1078'	N 12-7	1142'
S 12-9	1206'	S.W. 1/16 COR.	1327'
W 1/16 COR.	1326'	N 12-10	1576'
S 12-11	1587'	N 12-12	1746'
S 12-13	1758'	N 12-13	1971'
S 12-14	1965'	N 12-14	2246'
S 12-16	2218'	N 12-15	2438'
S 12-18	2423'	C.S. 1/16	2656'
SEC. COR.	2652'	E 12-2	224'
W 12-1	187'	E 12-4	455'
W 12-3	452'	E 12-6	658'
W 12-4	679'	E 12-8	932'
W 12-5	869'	E 12-10	1160'
W 12-6	1073'	S 1/4 COR.	1258'
S 1/16 COR.	1278'	NORTH	

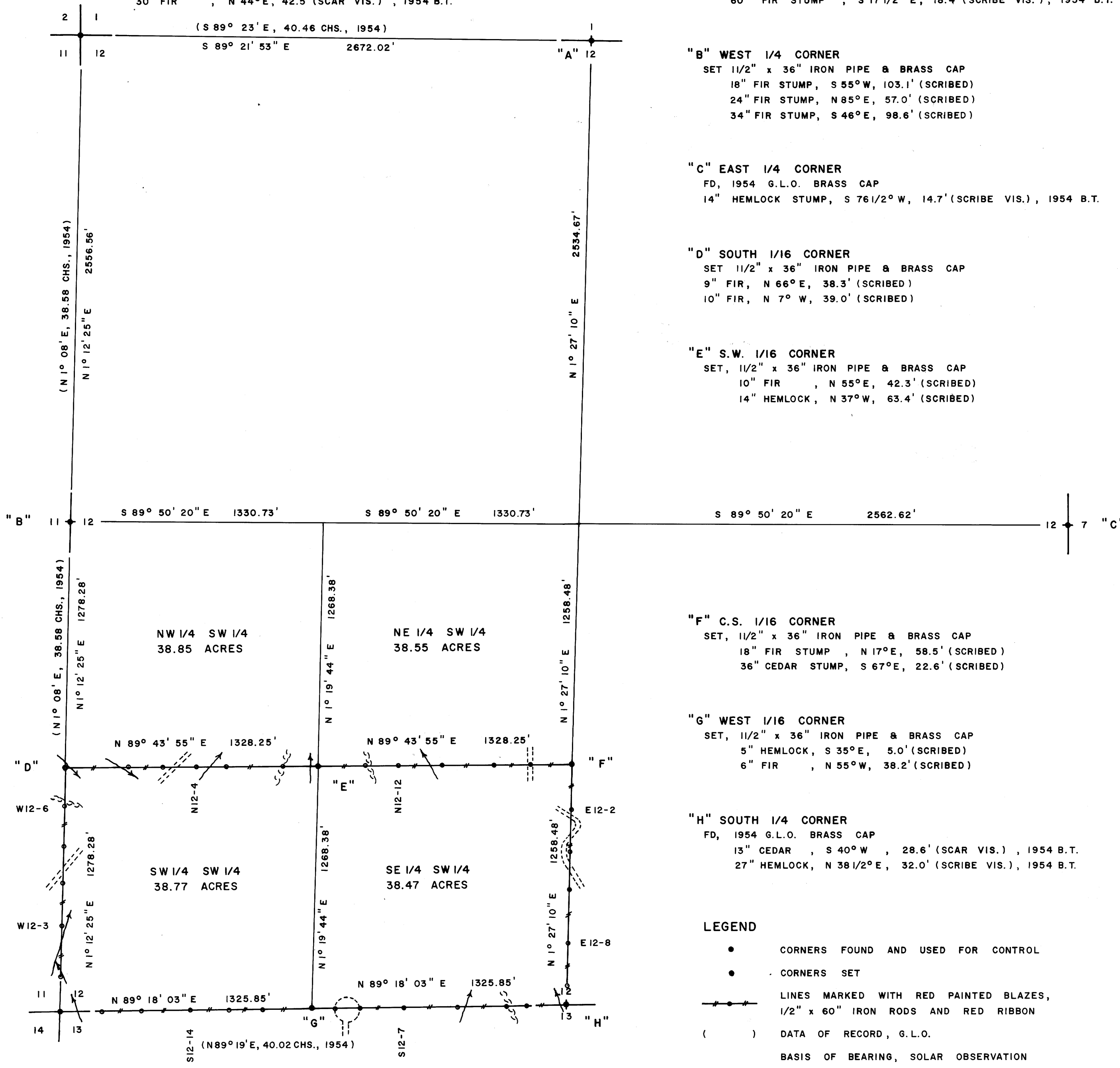
NARRATIVE

I, LESLIE ROBERTS, REGISTERED PROFESSIONAL LAND SURVEYOR DO CERTIFY THAT I HAVE CORRECTLY SURVEYED SECTION 12 IN ACCORDANCE TO THE MANUAL OF INSTRUCTIONS FOR THE SURVEY OF THE PUBLIC LANDS OF THE UNITED STATES. THE WEST 1/4 CORNER WAS SET AT PROPORTIONATE MEASURE BETWEEN THE N.W. AND THE S.W. CORNERS OF SAID SECTION 12. THE CENTER 1/4 CORNER WAS DETERMINED BY INTERSECTING THE N-S AND E-W CENTER LINES OF SAID SECTION 12. THE S.W. 1/16 CORNER WAS SET AT THE INTERSECTION OF THE N-S AND E-W CENTER LINES OF SAID S.W. 1/4. THE WEST 1/16 CORNER BETWEEN SECTIONS 12 AND 13 WAS SET AT PROPORTIONATE MEASURE BETWEEN THE SOUTH 1/4 CORNER AND THE S.W. SECTION CORNER. THE SOUTH 1/16 CORNER BETWEEN SECTIONS 11 AND 12 WAS SET AT PROPORTIONATE MEASURE BETWEEN THE WEST 1/4 CORNER AND THE S.W. SECTION CORNER. THE C.S. 1/16 CORNER WAS SET HALF-WAY BETWEEN THE CENTER 1/4 CORNER AND THE SOUTH 1/4 CORNER. A CLOSED MEANDER TRANSIT AND E.D.M. TRAVERSE WAS RUN BETWEEN ALL FOUND CORNERS AND USED FOR CONTROL. A CLOSED MEANDER TRANSIT TRAVERSE WAS RUN AROUND THE S 1/2 OF THE S.W. 1/4 OF SECTION 12 AND OFFSETS WERE COMPUTED FROM THIS MEANDER TRAVERSE TO THE TRUE PROPERTY LINE.

S.W. SECTION CORNER

- FD, 1954 G.L.O. BRASS CAP
- 12" MAPLE, SOUTH, 35.0' (NO SCAR), 1883 B.T.
- 20" MAPLE, N 48° E, 20.4' (SCAR VIS.), 1883 B.T.
- 68" FIR STUMP, N 76 1/2° W, 22.2' (SCAR VIS.), 1883 B.T.
- 24" FIR, S 13° W, 56.7' (SCAR VIS.), 1954 B.T.
- 29" HEMLOCK, S 38° E, 75.0' (SCRIBE VIS.), 1954 B.T.
- 46" CEDAR, N 28 1/2° W, 62.0' (SCRIBE VIS.), 1954 B.T.

REGISTERED  
PROFESSIONAL  
LAND SURVEYOR  
*Les Roberts*  
OREGON  
L. D. ROBERTS  
1986



MAP FILE 1188-22