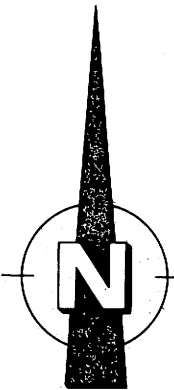
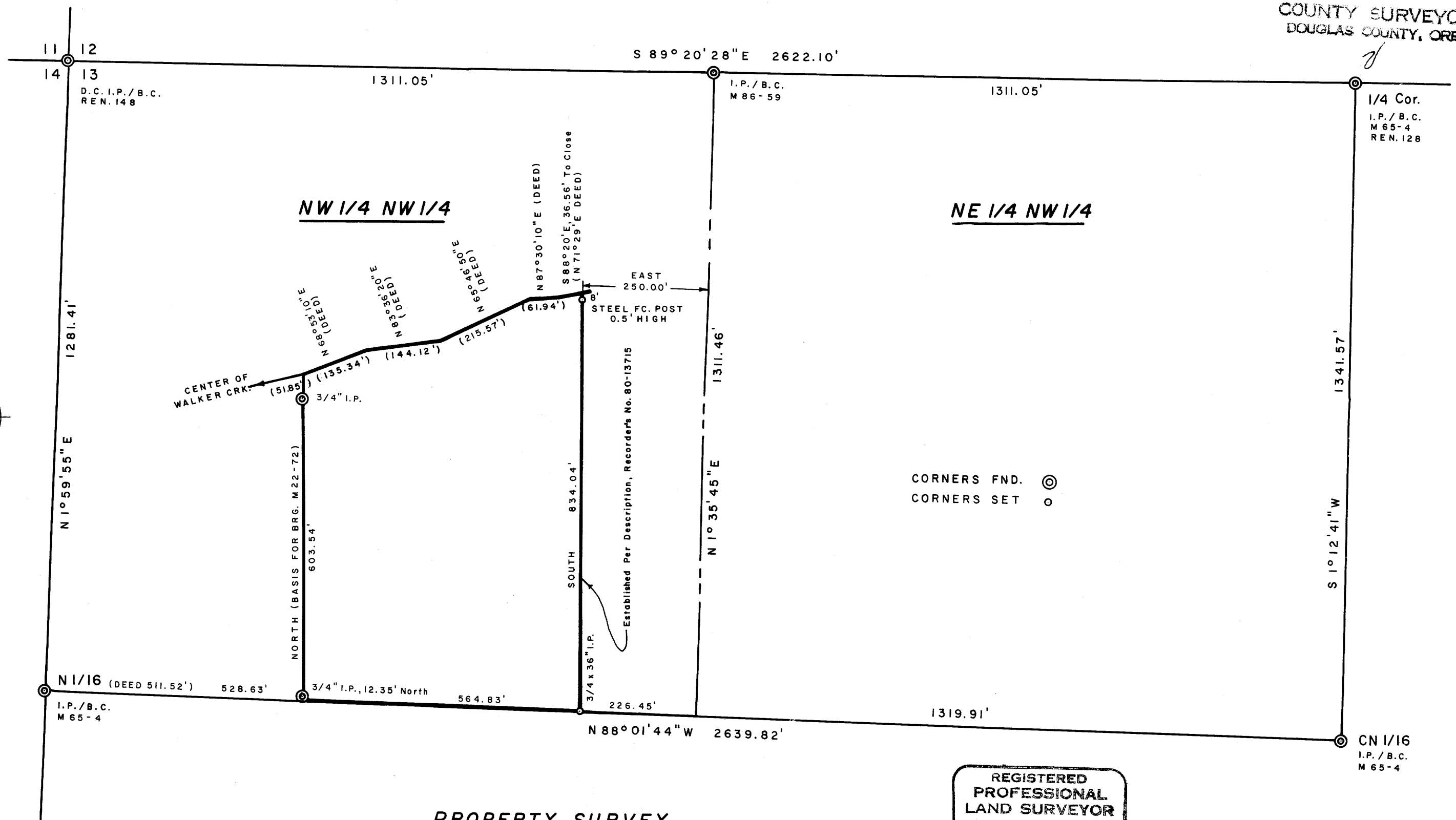


FILED ✓
RECEIVED ✓

JUL 14 1981

COUNTY SURVEYOR
DOUGLAS COUNTY, ORE.

MAP FILE M88-15



PROPERTY SURVEY
FOR
RAY RIDDELL
NW 1/4 NW 1/4, SEC. 13, T22S, R12W
JUNE 1981 SCALE 1"=200'

REGISTERED
PROFESSIONAL
LAND SURVEYOR

Richard J. Hintz

OREGON
MAY 18, 1980
RICHARD J. HINTZ
497

1890 N. 14th ST.
COOS BAY, OREGON

COUNTY SURVEYORS FILE DATA
DO NOT REMOVE FROM OFFICE

MAP FILE M88-15