

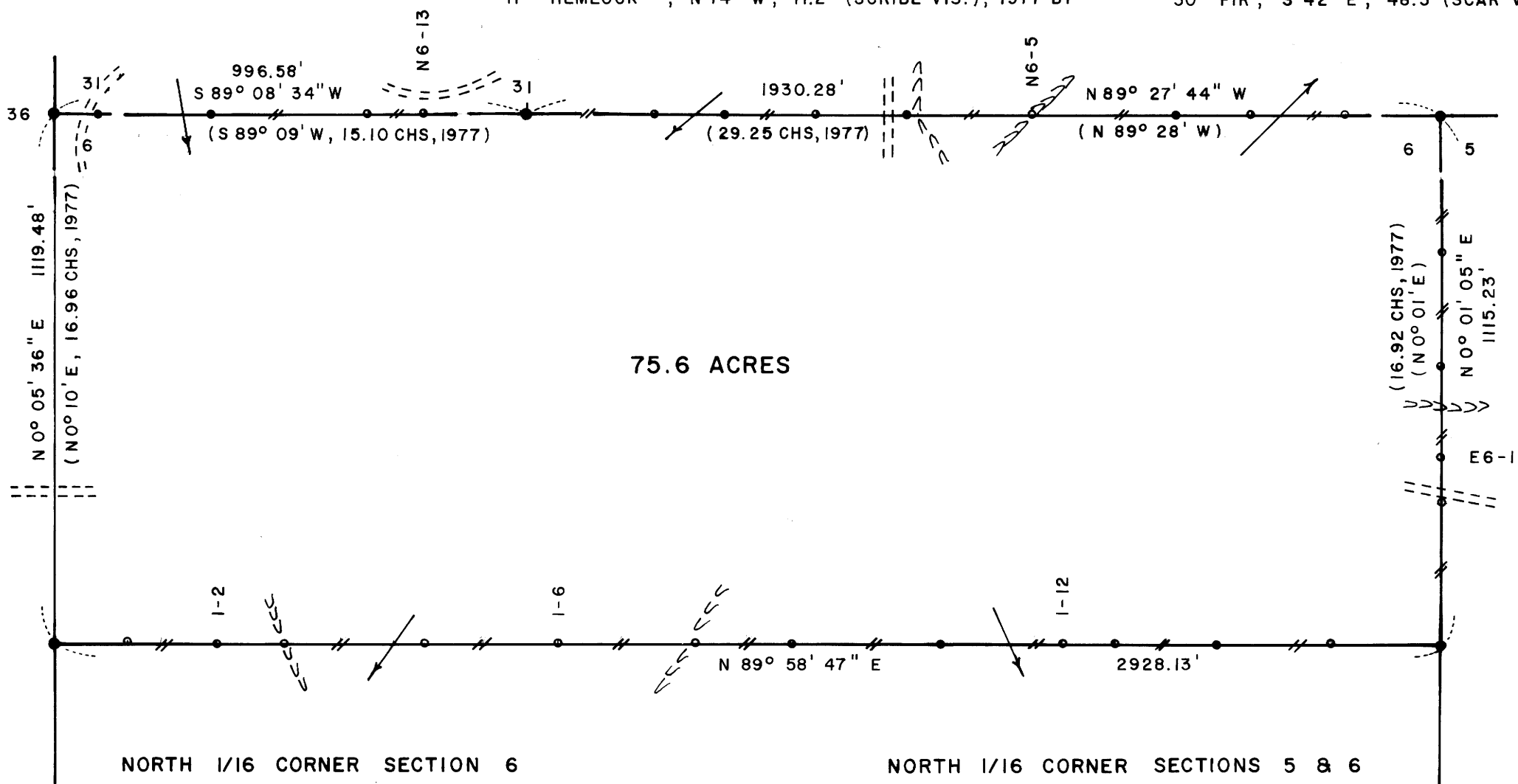
N.W. CORNER SECTION 6
 FD. 1949 G.L.O. BRASS CAP
 50" FIR STUB, N 14° E, 23.1' (SCAR VIS.),
 30" HEMLOCK, S 31° E, 41.0' (SCAR VIS.),
 20" FIR, N 41° E, 33.6' (SCRIBE VIS.)

SOUTH 1/4 CORNER SECTION 31
 FD. 1949 G.L.O. BRASS CAP
 32" FIR STUMP, N 30° W, 10.6' (SCAR VIS.), 1891 BT
 26" FIR SNAG, S 25° E, 12.2' (SCAR VIS.), 1891 BT
 36" FIR STUMP, N 30° E, 35.5' (SCAR VIS.), 1949 BT
 11" HEMLOCK, N 74° W, 11.2' (SCRIBE VIS.), 1977 BT

CLOSING CORNER SECTIONS 5 & 6
 FD. 1977 B.L.M. BRASS CAP AND A
 12" x 16" x 24" STONE MARKED "CC".
 STONE FOUND 5' NORTH OF CAP.
 14" FIR, S 35° W, 56.1' (SCAR VIS.), 1977 BT
 30" FIR, S 42° E, 48.3' (SCAR VIS.), 1977 BT

B8

LOCATION OF 1/2" IRON RODS		
1/16 COR.		
I-1	157'	EAST
I-2	345'	EAST
I-3	488'	EAST
I-4	785'	EAST
I-6	1064'	EAST
I-8	1357'	EAST
I-9	1564'	EAST
I-11	1876'	EAST
I-12	2132'	EAST
I-13	2247'	EAST
I-14	2461'	EAST
I-15	2702'	EAST
1/16 COR.		
C.T. - 2	303'	NORTH
E6 - 1	394'	NORTH
E6 - 3	587'	NORTH
E6 - 5	828'	NORTH
C.C.		
N6 - 1	200'	WEST
N6 - 2	398'	WEST
N6 - 3	561'	WEST
N6 - 5	862'	WEST
N6 - 7	1130'	WEST
N6 - 8	1320'	WEST
N6 - 9	1516'	WEST
N6 - 10	1657'	WEST
1/4 COR.		
N6 - 13	215'	WEST
N6 - 14	335'	WEST
N6 - 16	668'	WEST
N6 - 18	904'	WEST
SEC. COR.		
	997'	WEST



NORTH 1/16 CORNER SECTION 6
 FD. 1977 B.L.M. BRASS CAP
 16" MAPLE, S 51° E, 53.7' (SCAR VIS.), 1977 BT
 34" FIR, N 63° E, 24.5' (SCAR VIS.), 1977 BT
 SET,
 26" FIR, S 75° E, 62.1' (SCRIBED)

NORTH 1/16 CORNER SECTIONS 5 & 6
 FD. 1977 B.L.M. BRASS CAP
 22" FIR, N 48° E, 16.1' (SCAR VIS.), 1977 BT
 25" FIR, N 72° W, 38.8' (SCAR VIS.), 1977 BT

NARRATIVE
 I, LESLIE ROBERTS, REGISTERED PROFESSIONAL LAND SURVEYOR DO CERTIFY THAT I HAVE CORRECTLY SURVEYED SAID SECTION 6 IN ACCORDANCE TO THE MANUAL OF INSTRUCTION FOR THE SURVEY OF THE PUBLIC LANDS OF THE UNITED STATES. NO CORNERS WERE SET ON THIS SURVEY. A CLOSED MEANDER TRANSIT AND CHAIN TRAVERSE WAS RUN ALONG THE PROPERTY LINES. OFFSETS WERE COMPUTED FROM THIS MEANDER TRAVERSE TO THE TRUE PROPERTY LINE.

LEGEND

- CORNERS FOUND AND USED FOR CONTROL
- LINES MARKED WITH RED PAINTED BLAZES, 1/2" x 60" IRON RODS AND RED RIBBON
- () DATA OF RECORD

BASIS OF BEARING, EAST LINE OF SECTION 6 FROM B.L.M. 1977 SURVEY

DISTANCE TO BEARING TREES ARE CENTER MEASURE

ALL BEARING TREES ARE SCRIBED

SCALE 1" = 300'

SURVEY OF
SECTION 6, T20S, R7W, W.M.
DOUGLAS COUNTY, OREGON
FOR
INTERNATIONAL PAPER COMPANY
BY
ROBERTS SURVEYING INC.
29 WEST 29TH STREET
EUGENE, OREGON 97405
MARCH 7, 1981

REGISTERED
 PROFESSIONAL
 LAND SURVEYOR
Les Roberts

COUNTY SURVEYORS FILE DATA
 DO NOT REMOVE FROM OFFICE

MAP 187-8

MAP 187-8