

Resurvey of Line Between Sections 15 & 16, T29S, R7W, W.M.

For Roseburg Lumber Company

May 22, 1981

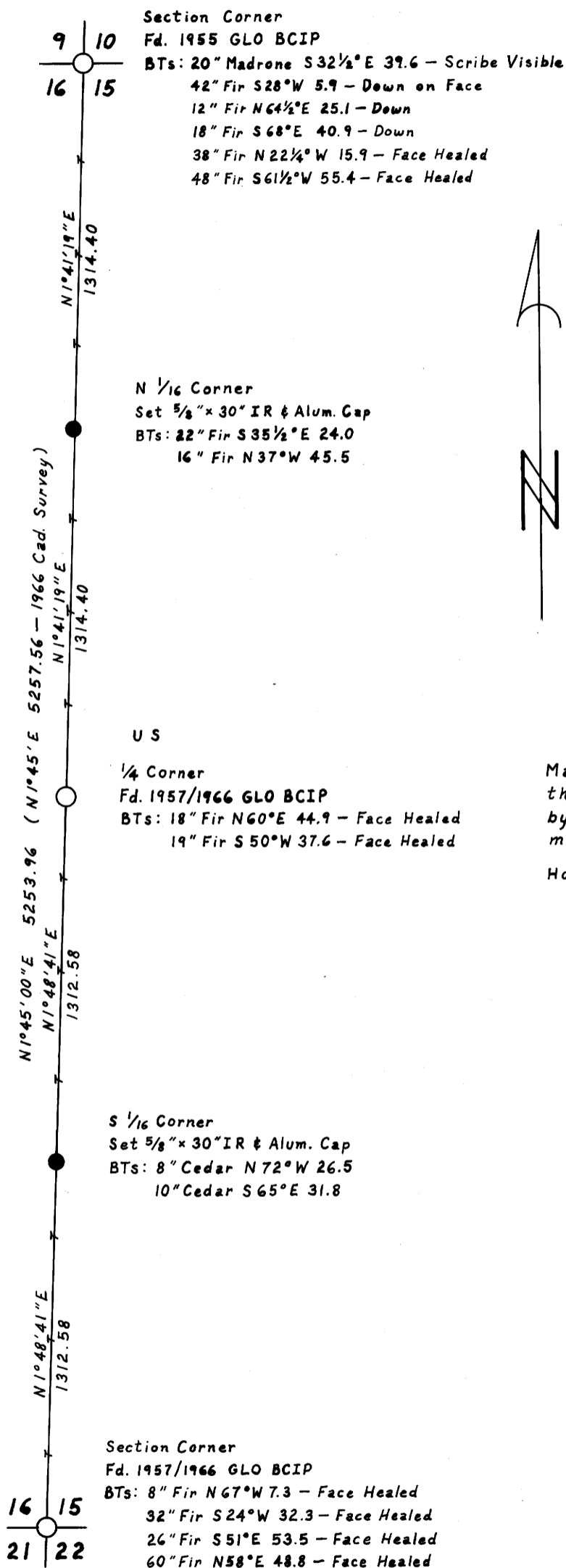
Scale: 1" = 500'

FILED *✓*

RECEIVED *✓*

JUN 15 1981

COUNTY SURVEYOR
DOUGLAS COUNTY, OREGON



Legend

- Monument Found
- Monument Set
- Line Referenced to Aluminum Tags
- () Record Data



Bearing Based on 1966 Cadastral Survey

I ran a closed traverse using a Jena 1 second theodolite and a MacI-E EDM. I achieved a precision of 1:35,252 and adjusted the traverse by the transit method. I set the corners by proportionate distance on a line between the existing monuments.

Howard W. Johnstone P.O. Box 1088 Roseburg, Oregon

**REGISTERED
PROFESSIONAL
LAND SURVEYOR**

Howard W. Johnstone

OREGON
MAY 13, 1968
HOWARD W. JOHNSTONE
498

R L Co.