

JOINT SURVEYORS FILE DR
DO NOT REMOVE FROM OFFICE

SURVEY FOR U.S. FOREST SERVICE

By
Baughman Technical Service, Inc.
5157 N. Umpqua Hwy.
Roseburg, Or. 97470

FILED *JB*
RECEIVED *jh*
JUN 2 1981

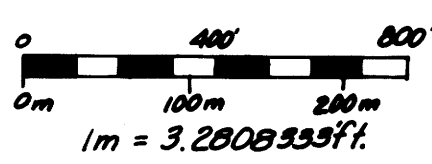
COUNTY SURVEYOR
DOUGLAS COUNTY, ORE.

May, 1981

CADASTRAL SURVEY - GLIDE NO. 11 & 12
Contract No. 53-04T1-1-10

SECTION 10, T. 26 S., R. 1 W., W. M.

Scale: 1" = 400'



LEGEND

- — Brass Cap Found
- — Corner Found, Brass Cap Set
- — Corner Set
- True Line Posted
- — Corner Index No.

SURVEY NARRATIVE:

Survey History:

Section 10 of T. 26 S., R. 1 W., W. M. was originally surveyed by Fred Mensch, U. S. Deputy Surveyor, under Contract No. 797 in 1910. In 1970, Vernon Tracy of the Douglas County Surveyor's Office perpetuated Mensch's original Southwest Section Corner, (C. S. File No. 52/77). Maurice E. Farr, O. P. E. 5188, of the U. S. Forest Service, surveyed the West line of Section 10 under his survey of Section 9, (M 63-20 & C. S. File No. 58/138). Under this survey, Farr set the West 1/4 Section Corner of Section 10 by single proportionate measurement. In 1978, Dennis Gaylord, U. S. F. S. and Deputy Douglas County Surveyor, perpetuated Mensch's original North-east and Southeast Section Corner and North 1/4 Section Corner, (C. S. File No. 59/46).

Survey Procedure:

The purpose of this survey was to monument the corners and mark the boundaries of the private lands in N.W. 1/4, N. E. 1/4, of Section 10. Original G. L. O. corners found were the Northeast, Southeast and Southwest Section Corners and the North and South 1/4 Section Corners. The West 1/4 Section Corner was set by Farr at single proportionate distances, (M 63-20 & C. S. File No. 58/138), and the East 1/4 Section Corner was established at single proportionate distances under this survey. Using these corner positions, the section was subdivided as per the U. S. B. L. M. Manual of Surveying Instructions 1973 and the laws of the State of Oregon.

A closed loop random line traverse was run between all found corner points. Angles were measured with a Lietz TM 20-C theodolite and distances measured with a Precision International "Beetle 1000" E. D. M. and a 200 foot steel tape. The survey meets U. S. F. S. Precision Class 8 Standards. Property lines were posted with Carsonite Posts with U. S. F. S. 54-2 signs, Property Boundary National Forest Land Behind This Sign, attached.

Corner Descriptions:

All bearing trees have a U. S. F. S. 54-3 (BT) sign and a U. S. F. S. 54-4 (Warning Against Destroying Monument) or a 54-9 (Land Survey Monument) sign attached and a 6" red band painted around the tree. All new bearing trees have double blazes with a brass washer stamped "LS 397" nailed into the lower blaze and both upper and lower blazes painted red.

1. Fd: 1" iron pipe, firmly set, projecting 6" above the ground with a 2 1/2" brass cap marked:
COUNTY SURVEYORS OFFICE
T26S R1W
1/4 S3
S10
1978

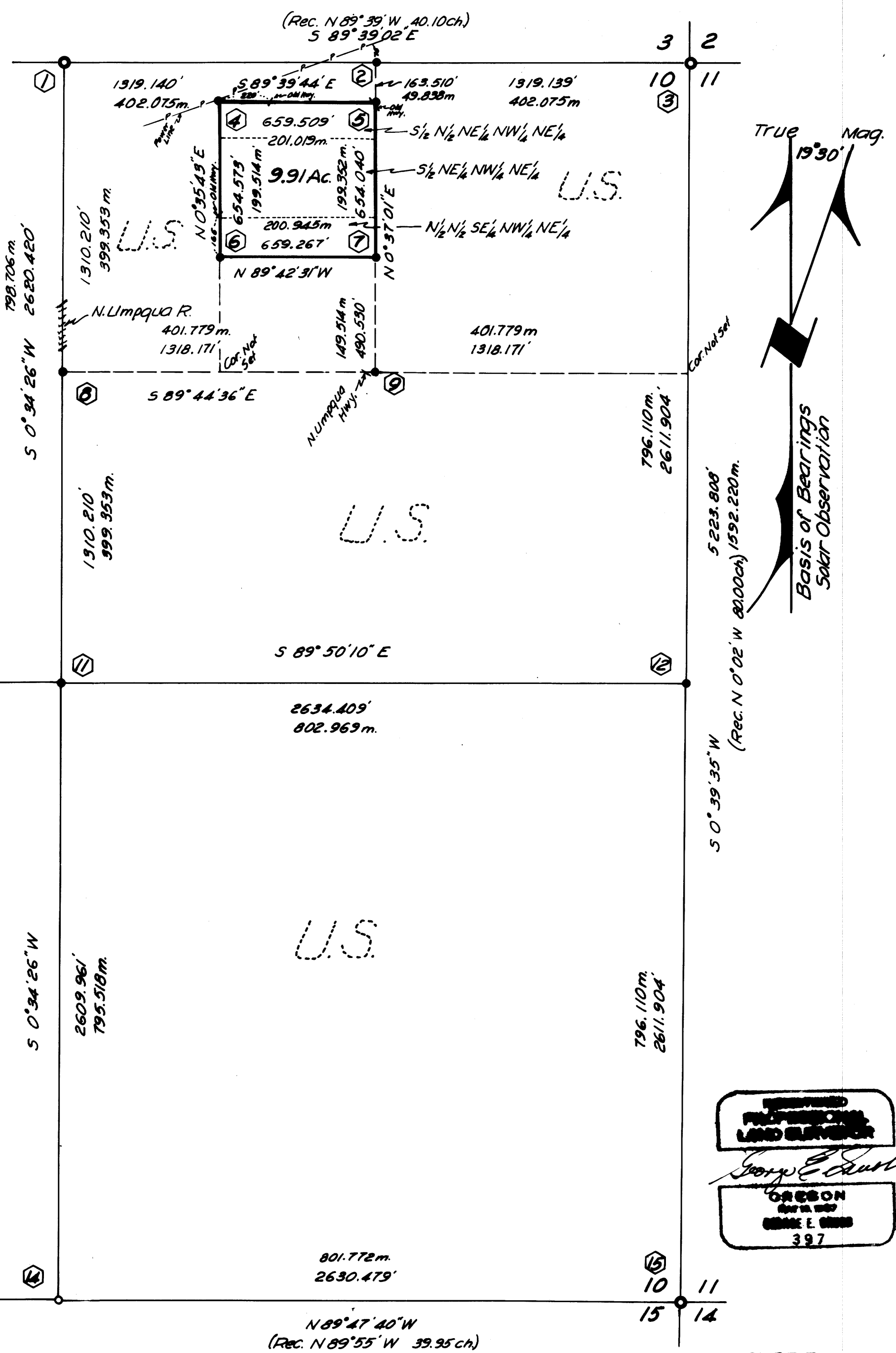
from which the original bearing trees:
a 50" Douglas fir with healed blaze bears N. 78° E., 17.2 ft.
a 36" Douglas fir snag with a partially healed and rotted blaze bears S. 12° W., 34.3 ft.
and a bearing tree by D. Gaylord, Douglas Co. Surveyors Office in 1978.
a 30" Douglas fir with partially healed blaze bears S. 16 1/2° W., 94.9 ft.

2. Set: 2" X 30" iron pipe, 20" in the ground in a 2 1/2 ft. diameter mound of stone with a 3" brass cap marked:
COUNTY SURVEYORS OFFICE
T26S R1W
E 1/16 S3
S10
1981
LS 397

from which new bearing trees:
a 25" Douglas fir bears N. 8° E., 16.5 ft., scribed "E 1/16 S3 BT".
a 14" Douglas fir bears S. 38 1/2° E., 29.4 ft., scribed "E 1/16 S10 BT".

3. Fd: 1" iron pipe, firmly set, at ground level in a 2 ft. diameter mound of stone with a 2 1/2" brass cap marked:
COUNTY SURVEYORS OFFICE
T26S R1W
S3 | S2
S10 | S11
1978

from which the original bearing trees:
a 48" Douglas fir with healed blaze bears N. 7° E., 112.1 ft. (Record 111.5 ft.)
a 50" Douglas fir snag with scribe marks "T26S R1W S3 B" visible on an opened blaze bears N. 30° W., 45.0 ft. (Record 48.2 ft.)
and bearing trees marked by D. Gaylord, Douglas Co. Surveyor's Office in 1978:
a 17" Douglas fir with scribe marks visible on a partially healed blaze bears S. 31° E., 32.3 ft.
a 14" Douglas fir with scribe marks "T26S R1W S11 CS BT" visible on a partially healed blaze bears S. 17 1/2° W., 31.8 ft.
a 11" Douglas fir with scribe marks "T26S R1W S3 CS BT" visible on a partially healed blaze bears N. 84° W., 9.1 ft.



REGISTERED
PROFESSIONAL
LAND SURVEYOR
George E. Smith
OREGON
APR 11 1981
GEORGE E. SMITH
397

COUNTY SURVEYORS FILE DATA
DO NOT REMOVE FROM OFFICE

FILED *JB*
RECEIVED *JS*
JUN 2 1981

COUNTY SURVEYOR
DOUGLAS COUNTY, ORE. *JB*

4. Set: 2" X 30" iron pipe, 24" in the ground in a 4 ft. diameter mound of stone with a 3" brass cap marked:
T26S R1W
1/1024 • S10
1981
PLS 397
from which new bearing trees:
a 13" Douglas fir bears S. 40° W., 102.4 ft., scribed "1/1024 S10 BT".
a 15" Douglas fir bears S. 30° E., 67.3 ft., scribed "1/1024 S10 BT".
5. Set: 2" X 30" iron pipe, 30" in the ground in a 2 1/2 ft. diameter mound of stone with a 3" brass cap marked:
T26S R1W
1/1024 • S10
1981
LS 397
from which new bearing trees:
a 15" alder bears N. 35 3/4° W., 11.6 ft., bark scribed "1/1024 S10 BT".
a 11" Douglas fir bears N. 52° E., 17.6 ft., scribed "1/1024 S10 BT".
6. Set: 2" X 30" iron pipe, 24" in the ground in a 2 ft. diameter mound of stone with a 3" brass cap marked:
T26S R1W
1/1024 • S10
1981
LS 397
from which new bearing trees:
a 16" Douglas fir bears N. 70° E., 23.8 ft., scribed "1/1024 S10 BT".
a 15" Douglas fir bears S. 26 1/2° W., 11.1 ft., scribed "1/1024 S10 BT".
7. Set: 2" X 30" iron pipe, 24" in the ground in a 3 ft. diameter mound of stone with a 3" brass cap marked:
T26S R1W
1/1024 • S10
1981
LS 397
from which new bearing trees:
a 6" Douglas fir bears S. 63 1/2° E., 9.8 ft., scribed "1/1024 S10 BT".
a 12" Douglas fir bears N. 5° W., 42.3 ft., scribed "1/1024 S10 BT".
8. Set: 2" X 30" iron pipe, 24" in the ground in a 3 ft. diameter mound of stone with a 2 1/2" brass cap marked:
T26S R1W
N 1/16 S10
1981
LS 397
from which new bearing trees:
a 8" hemlock bears N. 39° W., 17.7 ft., scribed "CN 1/16 S10 BT".
a 8" hemlock bears N. 72° E., 41.4 ft., scribed "CN 1/16 S10 BT".
9. Set: 2" X 30" iron pipe, 36" in the ground with a 2 1/2" brass cap marked:
T26S R1W
NE 1/16 • S10
1981
LS 397
from which:
a 2" X 2" "X" chiseled in a 2" X 4" X 10" stone set in concrete on the top N. E. corner of the "Umpqua National Forest Picnic Ground Bogus Creek" sign post foundation and located on the South side of ORE 138 at Bogus Creek Park bears S. 71°26'02" W., 112.46 ft.
a 2" X 2" "X" chiseled in a 4" X 8" X 8" stone set in concrete on the top S. W. corner of the "Umpqua National Forest Campground Bogus Creek" sign post foundation and located on the North side of ORE 138 at Bogus Creek Park bears S. 75°02'08" E., 177.19 ft.
10. Fd: 1" iron pipe, firmly set, projecting 2" above the ground in a 2 1/2 ft. diameter mound of stone with a 2 1/2" brass cap marked:
T26S R1W
1/4
S9 S10
PE 5188
1977
from which bearing tree marked by Farr in 1977:
a 22" hemlock with scribe marks "1/4 S9 BT" visible on an open, unhealed blaze bears S. 84° W., 48.4 ft.
a 19" hemlock with scribe marks "1/4 S10 BT" visible on an open, unhealed blaze bears S. 46 1/4° E., 24.4 ft.
11. Set: 2" X 30" iron pipe, 30" in the ground in a 2 1/2 ft. diameter mound of stone with a 2 1/2" brass cap marked:
T26S R1W
C 1/4 • S10
1981
LS 397
from which new bearing trees:
a 13" hemlock bears N. 86° E., 46.4 ft., scribed "C 1/4 S10 BT".
a 10" hemlock bears N. 25° W., 57.5 ft., scribed "C 1/4 S10 BT".
12. Set: 2" X 30" iron pipe, 22" in the ground in a 3 ft. diameter mound of stone with a 3" brass cap marked:
T26S R1W
1/4
S10 S11
1981
LS 397
from which new bearing trees:
a 18" Douglas fir bears S. 40 1/2° W., 8.3 ft., scribed "1/4 S10 BT".
a 17" Douglas fir bears S. 68° E., 10.2 ft., scribed "1/4 S11 BT".
13. Fd: 1" iron pipe, firmly set, projecting 12" above a 3 ft. high X 3 ft. diameter mound of stone with a 2 1/2" brass cap marked:
COUNTY SURVEYORS OFFICE
S9 S10
S16 S15
1970
from which the original bearing trees:
a 60" windfallen Douglas fir bears N. 53° W., 26.4 ft. Tree has fallen and is now laying along the west side of corner. The base is splintered and no scribe marks are visible.
a 40" Douglas fir snag bears S. 19° E., 42.0 ft. (Record 24.4 ft.)
and bearing trees marked by V. Tracy, Douglas Co. Surveyor's Office in 1970:
a 10" Douglas fir with healed blaze bears N. 37° W., 6.6 ft.
a 8" Douglas fir with scribe marks visible on a partially healed blaze bears S. 58° W. 17.5 ft.
a 6" Douglas fir with healed blaze bears S. 76° E., 15.0 ft.
a 6" Douglas fir with healed blaze bears N. 31° E., 17.1 ft. (Record 17.8 ft.)
14. Fd: 11" X 9" X 5" basalt stone, firmly set, projecting 3" above the ground marked "1/4" on the North face and "+" on top. (Record 15" X 10" X 6").
Set: At the exact corner point set a 2" X 30" iron pipe, 24" in the ground in a 3 ft. diameter mound of stone with a 3" brass cap marked:
T26S R1W
1/4 S10
S15
1981
LS 397
from which new bearing trees:
a 12" Douglas fir bears S. 54° W., 14.6 ft., scribed "1/4 S15 BT".
a 13" hemlock bears N. 63° W., 37.0 ft., scribed "1/4 S10 BT".
Set original corner stone alongside in mound of stone.
15. Fd: 1" iron pipe, firmly set, flush with the ground in a 1 1/2 ft. diameter mound of stone with a 2 1/2" brass cap marked:
COUNTY SURVEYORS OFFICE
S10 S11
S15 S14
1978
from which the original bearing trees:
a 18" Douglas fir, down & rotted, its root hole bears S. 87° W., 9.2 ft.
a 37" Douglas fir snag, bears N. 65° W., 54.8 ft. (Record N. 63° W.)
a 24" Douglas fir snag, bears S. 21° E., 14.5 ft. (Record S. 24° E., 15.2 ft.)
a 24" Douglas fir snag, bears N. 87° E., 16.5 ft.
and bearing trees marked by D. Gaylord, Douglas Co. Deputy Surveyor in 1978.
a 31" Douglas fir with scribe marks "T26S R1W S11 CS BT" visible on a partially healed blaze bears N. 79 1/2° E., 40.1 ft.
a 28" Douglas fir with scribe marks "T26S R1W S10 CS BT" visible on a partially healed blaze bears N. 64° W. 41.0 ft.
a 22" Douglas fir with scribe marks "T26S R1W S15 CS BT" visible on a partially healed blaze bears S. 70° W., 7.3 ft.
a 18" Douglas fir with scribe marks "T26S R1W S14 CS BT" visible on a partially healed double blaze bears S. 9° E., 24.2 ft.

SURVEYOR'S CERTIFICATE

"I, George E. Grubb, a registered land surveyor in the State of Oregon, hereby certify that this plat and the notes hereon are a correct representation of a survey, I performed during May, 1981, for the U. S. Forest Service, in accordance with the statutes of the State of Oregon and with the Articles of my contract.

George E. Grubb
George E. Grubb

REGISTERED
PROFESSIONAL
LAND SURVEYOR
George E. Grubb
OREGON
MAY 10 1981
GEORGE E. GRUBB