

SUBDIVISION OF THE SW 1/4 OF SEC. 25 T28S R5W WM

SURVEYED FOR FRANK ZIMMERS
 SURVEYED BY BURTON W. HOLT APRIL 1981 SCALE 1"=300'
 P.O. BOX 844 MYRTLE CR., OR. 97457

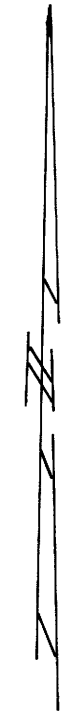
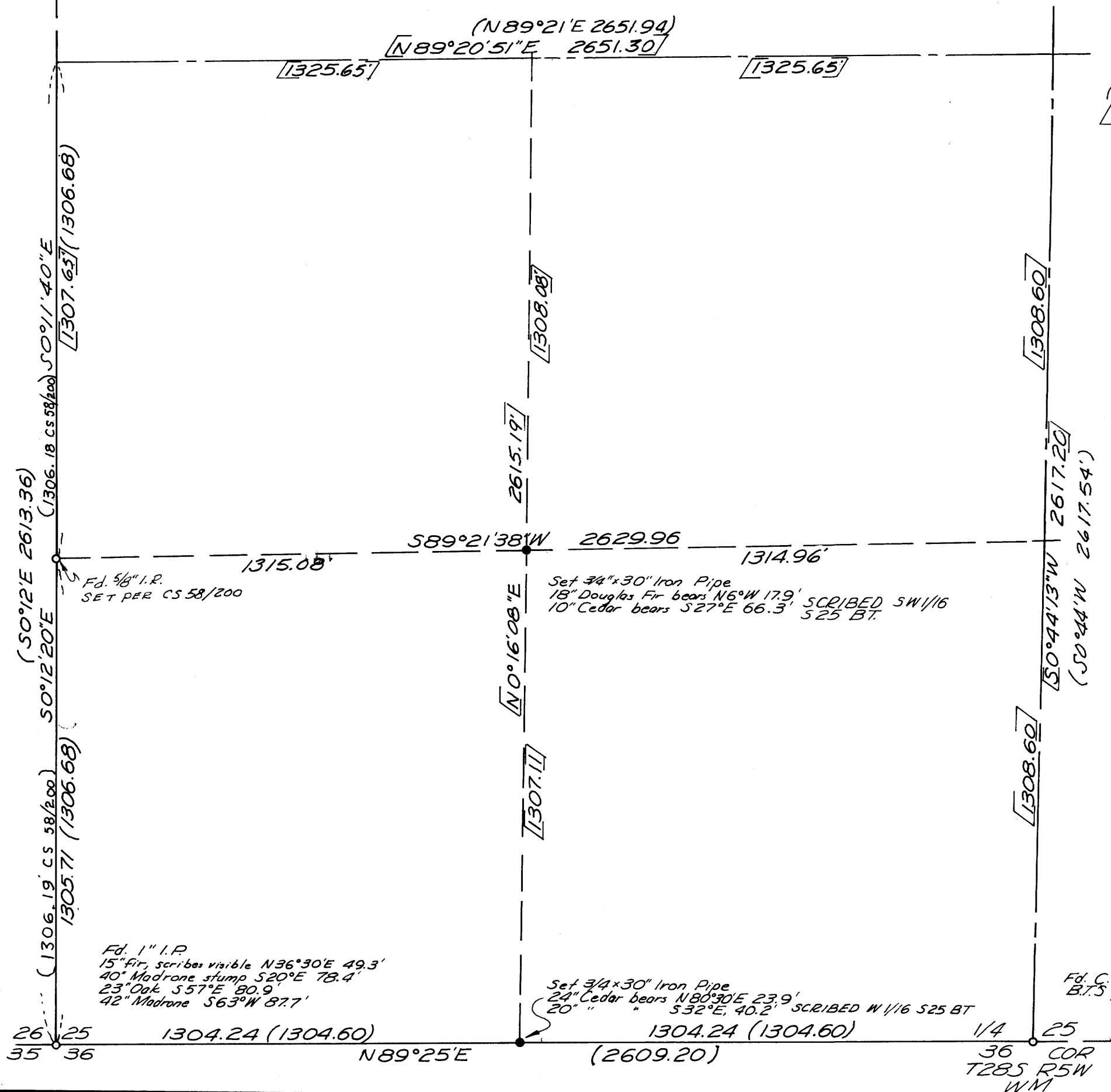
Bearings based on south line of section, N89°25'E (M22-58)

- Set 3/4"x30" I.P.
- Fd. mon. as noted
- [] Record data per M22-58
- [] Calculated data per M22-58

FILED *BS*
 RECEIVED *7/8*
 MAY 13 1981

COUNTY SURVEYOR
 DOUGLAS COUNTY, ORE.
BS

C.S. File 58/252(N)
 Map File M87-56



REGISTERED
 PROFESSIONAL
 LAND SURVEYOR

Burton W. Holt

OREGON
 OCTOBER 4, 1957
 BURTON W. HOLT
 418

COUNTY SURVEYORS FILE DATA
 DO NOT REMOVE FROM OFFICE

Map File M87-56
 C.S. File 58/252(N)

M87-56

FILED *BS*
RECEIVED *✓*

MAY 15 1981

SURVEY NARRATIVE TO COMPLY WITH PARAGRAPH 209.250 O.R.S.

COUNTY SURVEYOR
DOUGLAS COUNTY, ORE.

SURVEY FOR: Frank Zimmers
Myrtle Creek, Oregon 97457

DATE: May 13, 1981

LOCATION: Section 25 T28S R5W W.M.,

PURPOSE: To set one-sixteenth corners in S.W. one-quarter of Section 25.

PROCEDURE: I used the South line of the W. $\frac{1}{2}$ of Section 25, T28S R5W W.M., as my basis of bearings, by running a traverse between the S.W. corner and the South $\frac{1}{4}$ corner of said Section 25. I found the total distance to be short 0.72 ft. I then established the W. 1/16 corner on the South line. I ran North from the S.W. corner of said Section 25 and found the S. 1/16 corner set by Martin, per survey CS 58/200. This corner is out of position being S. 0.97 ft. and W. 0.13 ft.; however, it has been used as a good corner for several years, so I accepted it. I then calculated thru the corners shown on M 22-58 and from this subdivided the S.W. $\frac{1}{4}$ of said Section 25. There was some slight difference, as shown of the map. This was due to a small closure error in the survey M 22-58 and the difference I measured on the South line of said Section 25.

EQUIPMENT: This survey was executed with a Lietz 6 second Theodolite, a Lietz EDM, a 200 foot steel tape, and a Surveyor 31 Computer.

BASIS OF BEARING: All bearings are based on the bearing of the South line of Section 25 as determined by M 22-58.

Burton Holt
PO Box 844
Myrtle Creek, Or
97457

REGISTERED
PROFESSIONAL
LAND SURVEYOR

Burton W. Holt

OREGON
OCTOBER 4, 1987
BURTON W. HOLT
418

C. S. File No. 58/252-4