

SURVEY FOR U.S. FOREST SERVICE

By
Baughman Technical Service, Inc.
 5157 N. Limpqua Hwy.
 Roseburg, Or. 97470

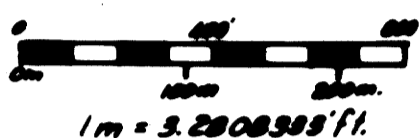
April, 1981

CADASTRAL SURVEY - GLIDE No. 11412

Contract No. 59-OAT1-1-10

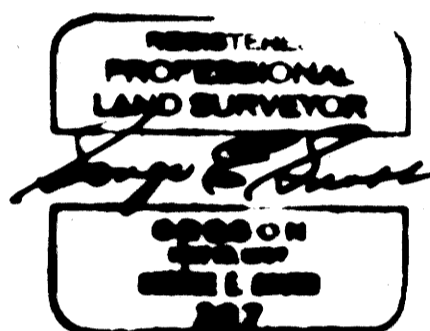
SECTION 8, T. 26 S., R. 1 W., W. M.

Scale: 1" = 400'



LEGEND

- - Brass Cap Found
- - Corner Found, Brass Cap Set
- - Corner Set
- True Line Posted
- - Corner Index No.



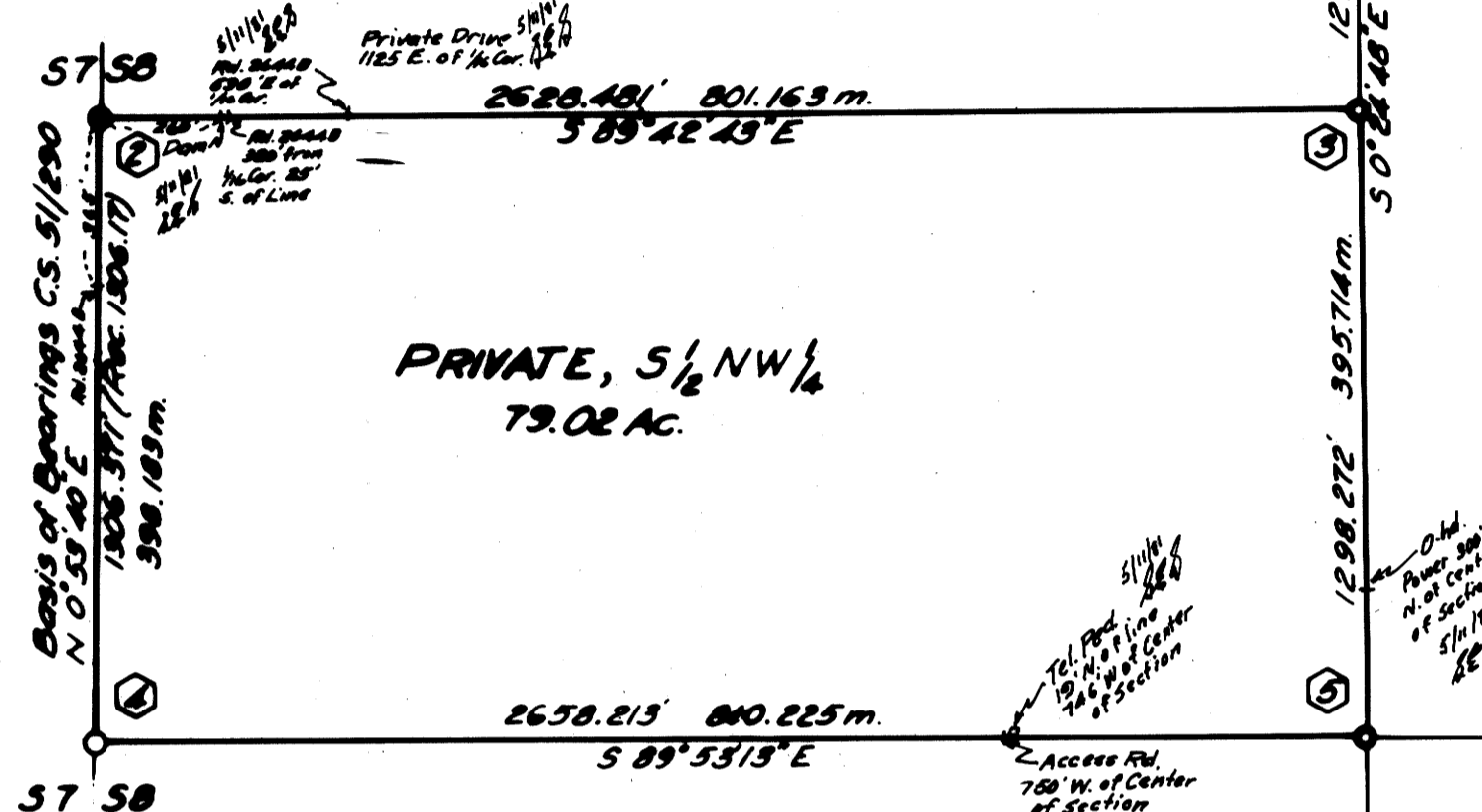
COUNTY SURVEYORS FILE DATA
 DO NOT REMOVE FROM OFFICE

1. Fd. 1" iron pipe, firmly set, projecting 10" above the ground with a 2 1/2" brass cap marked:

COUNTY SURVEYOR'S OFFICE

T26S
 1/4 S5
 R 1 W
 1970

from which original bearing trees:
 a 8" Douglas fir snag with scribe marks "1/4 S5 BT" visible on an open blaze bears N. 30° W., 13.9 ft.
 and bearing trees marked by V. Tracy, Douglas County Surveyor's Office in 1970:
 a 13" Douglas fir with scribe marks "1/4 S5 CS BT" visible on a partially healed blaze bears N. 30° E., 24.8 ft.
 a 8" Douglas fir with a partially healed blaze bears S. 63° W., 33.0 ft.



SURVEY NARRATIVE:

Survey History:

Section 8 of T. 26 S., R. 1 W., W. M. was originally surveyed by Fred Mensch, U. S. Deputy Surveyor, under Contract No. 797 in 1910. In 1964, Don E. Garrett, O.R.L.S. 544, surveyed the North 1/2 of the West line and the East-West centerline of Section 8 and set the N. 1/16, S. 7 / S. 8 (CS 51/290). In 1970, Vernon Tracy of the Douglas County Surveyor's Office perpetuated Mensch's original North, South, East and West 1/4 Section Corners (CS 52/77). In 1977, Maurice E. Farr, O.P.E. 5188, of the U. S. Forest Service, surveyed the East line of Section 8 under his survey of Section 9, (M 63-20 & CS 58/138).

Survey Procedure:

The purpose of the survey was to monument the corners and mark the boundaries of the private lands in Section 8. Original G.L.O. 1/4 Section Corners controlled the section subdivision and Garrett's N. 1/16 S. 7 / S. 8 controlled position of the North line of the S 1/2, NW 1/4. A closed loop random line traverse was run between all found corner points. Angles were measured with a Wild T 1-A theodolite and distances measured with a Hewlett Packard HP 3805 E.D.M. or a 300 foot steel tape. The survey meets U. S. F. S. Precision Class 8 Standards of 1/2000 minimum linear closure before adjustment. Property lines were posted with Carsonite Posts with U. S. F. S. 54-2 signs, Property Boundary - National Forest Land Behind This Sign, attached.

CORNER DESCRIPTIONS:

All new bearing trees have a double blaze with a brass washer stamped LS 397 nailed into the lower blaze, a 6" red band painted around the tree and both upper and lower blazes painted red. All bearing trees have a U. S. F. S. 54-3 (BT) sign attached and a U. S. F. S. 54-4 (Warning against destroying monument) or a U. S. F. S. 54-9 (Land Survey Monument) sign attached.

4. Fd. 1" iron pipe, firmly set, projecting 9" above the ground, with a 2 1/2" brass cap marked:

COUNTY SURVEYOR'S OFFICE

T26S
 1/4 S7 S8
 R1W
 1970

from which an original bearing tree:
 a 50" Douglas fir with healed blaze bears N. 6° W., 55.4 ft.
 and bearing trees marked by V. Tracy, Douglas County Surveyor's Office in 1970:
 a 15" Douglas fir with healed blaze bears N. 51° E., 10.7 ft.
 a 13" Douglas fir with healed blaze bears S. 85° W., 5.9 ft. (Record S. 82° W.)

5. Set: 2" X 30" iron pipe, 24" in the ground with a 3" brass cap marked:

T26S R1W
 C 1/4 S8
 1981
 PLS 397

from which new bearing trees:
 a 9" hemlock bears S. 73° E., 22.2 ft., scribed "C 1/4 S8 BT".
 a 7" hemlock bears S. 17° W., 20.5 ft., scribed "C 1/4 S8 BT".

2. Fd. 5/8" iron rod projecting 12" above the ground
 Set: 2" X 30" iron pipe, 24" in the ground, in a 2 1/2" diameter mound of stone with a 3" brass cap marked:

T26S R1W
 N 1/16
 S7 S8
 1981
 PLS 397

from which bearing trees marked by Garrett in 1964:
 a 52" Douglas fir stump with bark scribing "N 1/16 S8 BT" visible bears N. 52° E., 16.8 ft. (Record N. 53° W., 14.5 ft.)
 a 21" Cedar with scribe marks visible on a partially healed blaze bears N. 50° W., 35.8 ft. (Record N. 53° W., 35.2 ft.)
 and a new bearing tree:
 a 7" Douglas fir bears N. 56° E., 39.8 ft., scribed "N 1/16 S8 BT".

3. Set: 2" X 30" iron pipe, 22" in the ground, with a 3" brass cap marked:

T26S R1W
 C
 N 1/16 S8
 C
 1981
 PLS 397

from which new bearing trees:
 a 13" Douglas fir bears S. 82° E., 27.6 ft., scribed "CN 1/16 S8 BT".
 a 9" Douglas fir bears S. 13° E., 64.1 ft., scribed "CN 1/16 S8 BT".

6. Fd. 1" iron pipe, firmly set, projecting 11" above the ground with a 2 1/2" brass cap marked:

COUNTY SURVEYOR'S OFFICE

T26S
 1/4 S8 S9
 R1W
 1970

from which an original bearing tree:
 a 29" Douglas fir, with opened blaze, bears N. 41° W., 32.2 ft. (Record 33.0 ft.)
 and bearing trees marked by V. Tracy, Douglas County Surveyor's Office in 1970:
 a 9" Douglas fir with healed blaze bears N. 65° W., 6.7 ft.
 a 10" Douglas fir with healed blaze bears S. 17° E., 11.5 ft. (Record S. 19° E., 12.5 ft.)

7. Fd: 1" iron pipe, firmly set, projecting 20" above the ground and 6" above a 2 1/2" diameter mound of stone with a 2 1/2" brass cap marked:

COUNTY SURVEYOR'S OFFICE

T26S
 1/4 S8
 S17
 R1W
 1970

from which the original bearing trees:
 a 23" Douglas fir with healed blaze bears N. 53° E., 14.5 ft. (Record N. 50° E.)
 a 15" Douglas fir with healed blaze bears S. 67° W., 19.1 ft. (Record S. 65° W.)
 and a bearing tree marked by V. Tracy, Douglas County Surveyor's Office in 1970.
 a 12" cedar with scribe marks "1/4 S17 CS BT" visible on a partially healed blaze bears S. 68° W., 38.4 ft. (Record S. 64° W., 39.0 ft.)

MAP FILE M287-37

MAP FILE M287-37