

FILED BS  
RECEIVED JH

APR 13 1981

COUNTY SURVEYOR  
DOUGLAS COUNTY, ORE.  
BS

T. 21 S. R. 5 W. W.M. W 1/2 line S. 30 + 31

April 1, 1981

Scale 1" = 200'

FOR

David R Cooper

Drain, Oregon, 97435

Wilford N. Haines

Rt. 38 Box 2

Drain, Oregon, 97435

phone 836-2303

The purpose of this survey was to set the W 1/4 corner on the line of sections 30+31 T. 21 S, R. 5 W. W.M.

I started survey at the corner common to sections 25 + 36 T. 21 S R. 5 W and sections 30 + 31 T. 21 S, R. 5 W. and ran East on a traverse along a brushed out line to the 1/4 corner common to sections 30 + 31 T. 21 S, R. 5 W. from this traverse I calculated the position of the 1/4 corner on the basis of 21.52 - 41.52. From this calculations I set the 1/4 and marked with trees as shown.

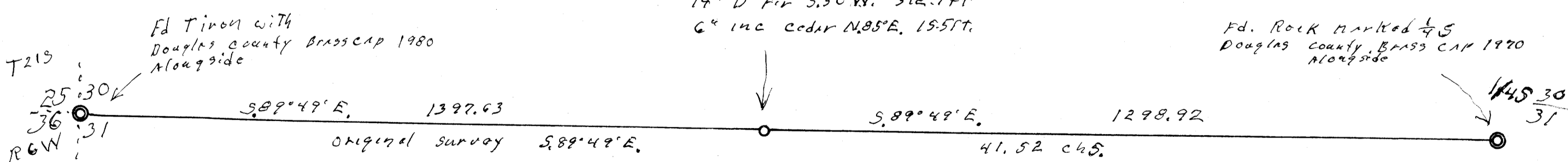
REGISTERED  
OREGON  
LAND SURVEYOR

Wilford N. Haines  
MAY 7, 1948  
WILFORD N. HAINES  
239

North  
41.52  
42.00  
42.52  
43.00  
43.52  
44.00  
44.52  
45.00  
45.52  
46.00  
46.52  
47.00  
47.52  
48.00  
48.52  
49.00  
49.52  
50.00  
50.52  
51.00  
51.52  
52.00  
52.52  
53.00  
53.52  
54.00  
54.52  
55.00  
55.52  
56.00  
56.52  
57.00  
57.52  
58.00  
58.52  
59.00  
59.52  
60.00  
60.52  
61.00  
61.52  
62.00  
62.52  
63.00  
63.52  
64.00  
64.52  
65.00  
65.52  
66.00  
66.52  
67.00  
67.52  
68.00  
68.52  
69.00  
69.52  
70.00  
70.52  
71.00  
71.52  
72.00  
72.52  
73.00  
73.52  
74.00  
74.52  
75.00  
75.52  
76.00  
76.52  
77.00  
77.52  
78.00  
78.52  
79.00  
79.52  
80.00  
80.52  
81.00  
81.52  
82.00  
82.52  
83.00  
83.52  
84.00  
84.52  
85.00  
85.52  
86.00  
86.52  
87.00  
87.52  
88.00  
88.52  
89.00  
89.52  
90.00  
90.52  
91.00  
91.52  
92.00  
92.52  
93.00  
93.52  
94.00  
94.52  
95.00  
95.52  
96.00  
96.52  
97.00  
97.52  
98.00  
98.52  
99.00  
99.52  
100.00

W 1/4 S 30 + 31 set 5/8" x 40' rebar  
scribed 3 trees  
18" D Fir N. 37° W. 47.5 ft  
14" D Fir S. 50° W. 312.9 ft  
6" inc cedar N. 85° E. 15.5 ft.

Ed. Rock marked 1/4 S  
Douglas County Brass Cap 1970  
Along side



MAP FILE M81-32

MAP FILE M81-32