

COUNTY SURVEYORS FILE DATA
DO NOT REMOVE FROM OFFICE

SURVEY IN S.E. 1/4, SECTION 24, T27S, R6W, W.M.

FOR: PAL BODY SHOP (SPARKY BROWN)
BY: BHW ENGINEERING & SURVEYING, INC.
1205 S.E. COURT-ROSEBURG, ORE.

FILED BS
RECEIVED
APR 19 1981
COUNTY SURVEYOR
DOUGLAS COUNTY, ORE.
BS

LEGEND:

- - SET 5/8" x 30" IRON ROD
- ⊙ - SET CONK. NAIL AS NOTED
- - FOUND MONUMENT AS NOTED

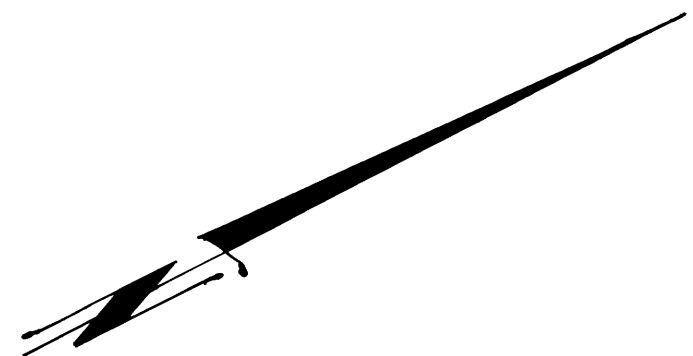
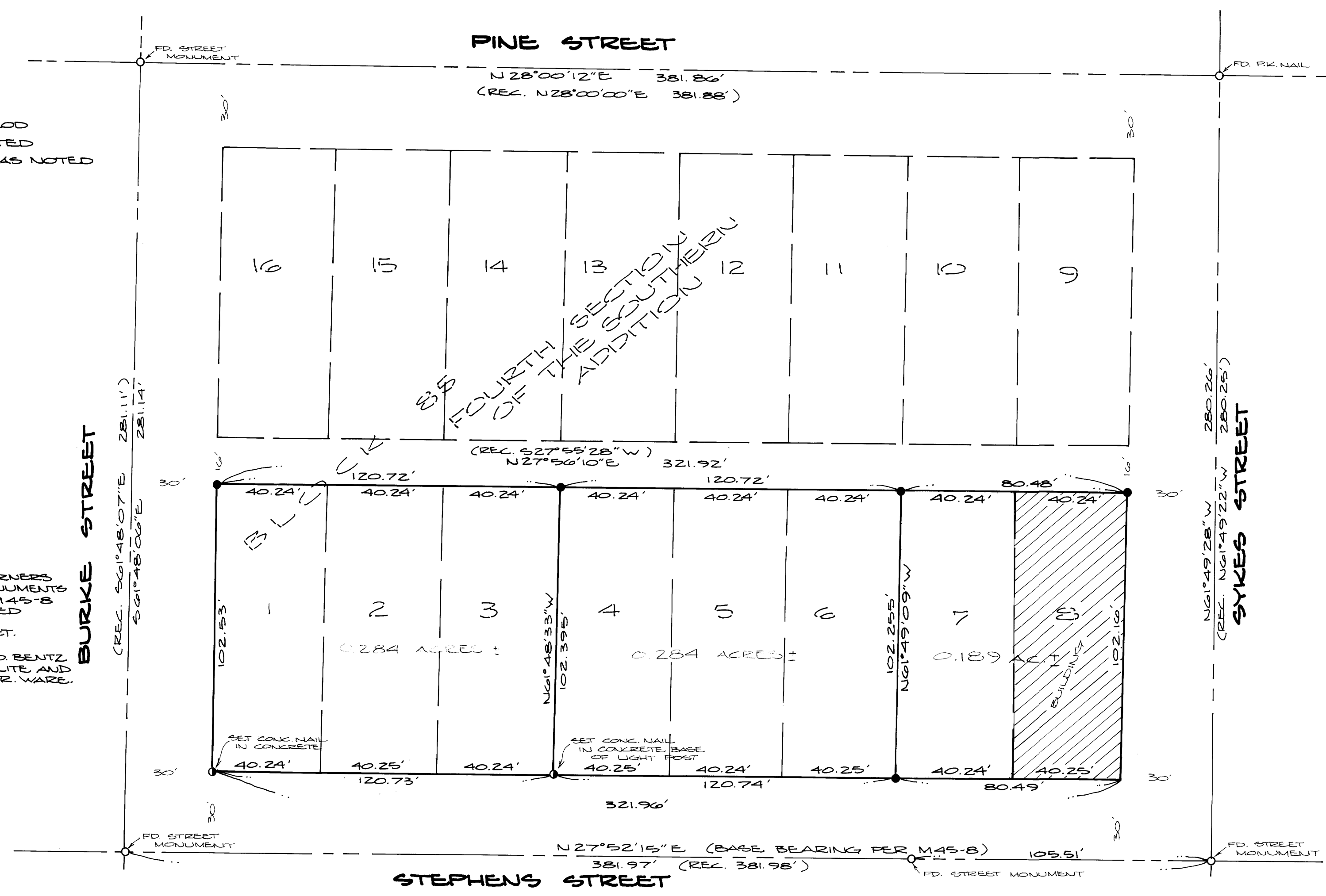
SCALE: 1" = 30'
JANUARY 1981



NARRATIVE:

SURVEY TO LOCATE LOT CORNERS FOR PENDING CONSTRUCTION. MONUMENTS TIED AS INDICATED IN SURVEY M45-8 AND LOT CORNERS PROPORTIONED ACCORDINGLY. BASE BEARING IS CENTERLINE OF STEPHENS STREET.

FIELD CREW CONSISTED OF D. BENTZ AND G. LANG USING T-1 THEODOLITE AND RED-1 E.D.M. COMPUTATIONS BY R. WARE. DRAFTING BY D. HOPKINS.



MAP 1117 1887-30

MAP 1117 1887-30