

SURVEY OF LOTS 7 & 8 OF BLOCK 12, "MILLERS ADDITION TO ROSEBURG, OREGON"

LOCATED IN N.E. 1/4 OF
SECTION 25, T27S, R6W, W.M.

COUNTY SURVEYORS FILE DATA
DO NOT REMOVE FROM OFFICE

FILED *Bd*
RECEIVED *JK*
MAR 31 1981

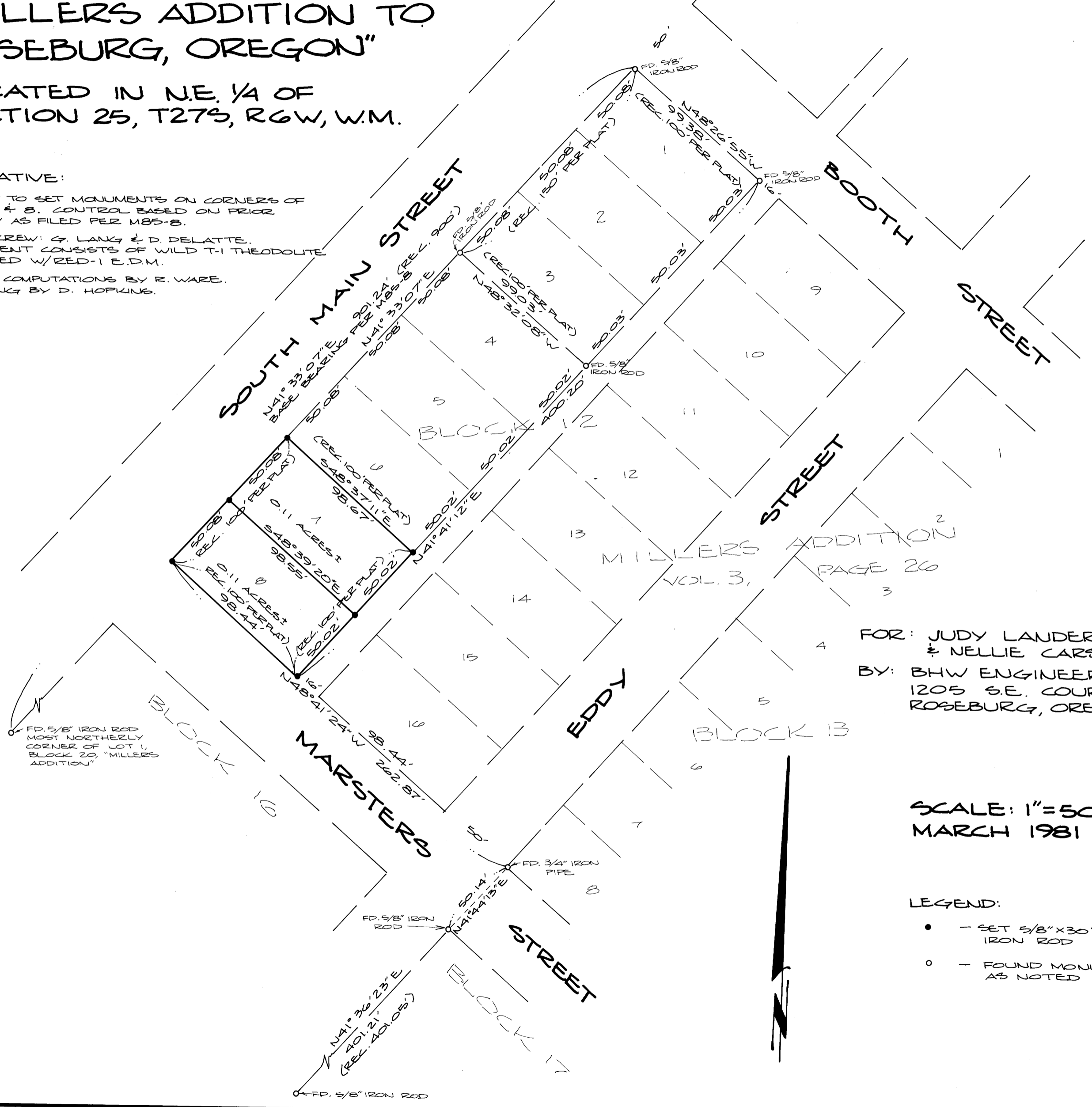
COUNTY SURVEYOR
DOUGLAS COUNTY
Bd

NARRATIVE:

SURVEY TO SET MONUMENTS ON CORNERS OF LOTS 7 & 8. CONTROL BASED ON PRIOR SURVEY AS FILED PER M85-8.

FIELD CREW: G. LANG & D. DELATTE.
EQUIPMENT CONSISTS OF WILD T-1 THEODOLITE MOUNTED W/RED-1 E.D.M.

OFFICE COMPUTATIONS BY R. WARE.
DRAFTING BY D. HOPKINS.



REGISTERED
PROFESSIONAL
LAND SURVEYOR

Romano E. Ware

OREGON
NOV 16, 1973
ROMANEO E. WARE
1005

MILLERS ADDITION
VOL. 3, PAGE 26

FOR: JUDY LAUDEROS
& NELLIE CARSTENSEN
BY: BHW ENGINEERING & SURVEYING
1205 S.E. COURT
ROSEBURG, OREGON 97470

SCALE: 1"=50'
MARCH 1981

- LEGEND:**
- - SET 5/8" X 30" IRON ROD
 - - FOUND MONUMENT AS NOTED

MAP FILE M87-14

MAP FILE M87-14