

DO NOT REMOVE FROM OFFICE

FILED *B8*
RECEIVED *JH*

MAR 31 1981

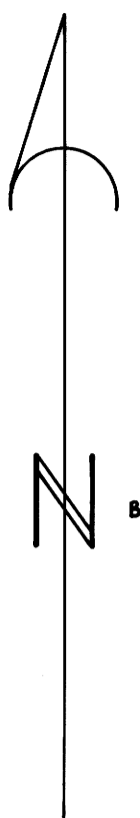
COUNTY SURVEYOR
DOUGLAS COUNTY, ORE.

Resurvey and Subdivision of SE 1/4 & N 1/2 Section 28, T 30 S, R 2 W, W. M., Oregon

For Roseburg Lumber Company
March 17, 1981
Scale: 1" = 400'

Legend

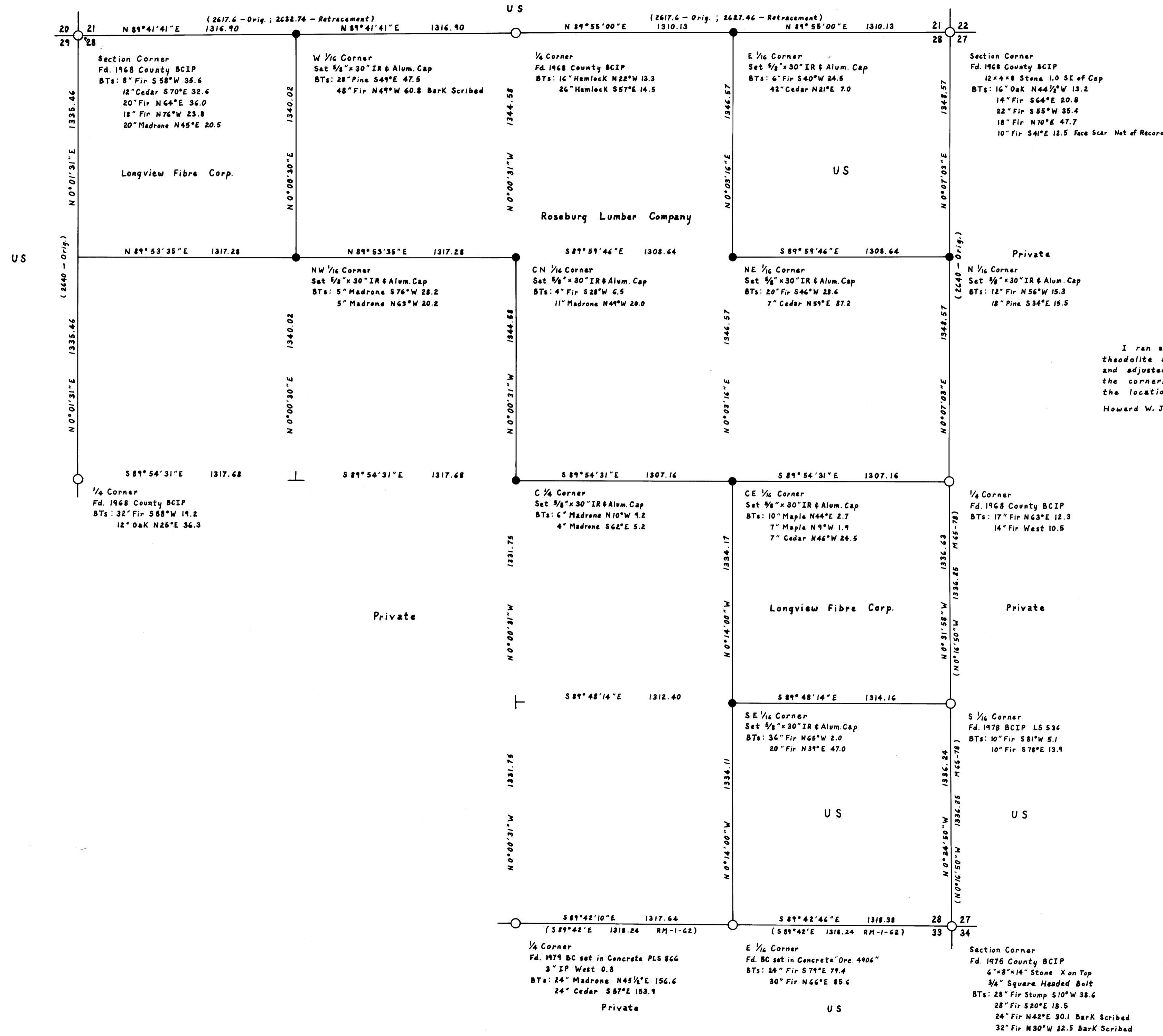
- Monument Found
- Monument Set
- Section or Property Line
- () Record Data



Bearing Based on Solar Observation

I ran a closed traverse in Section 28 using a Jena 1 second theodolite and a Mac I-E EDM. I achieved a precision of 1:43090 and adjusted the traverse by the Crandall method. I set the corners by standard subdivision procedure based on the location of the existing monuments.

Howard W. Johnstone P. O. Box 1088 Roseburg, Oregon



REGISTERED
PROFESSIONAL
LAND SURVEYOR

Howard W. Johnstone

OREGON
MAY 13, 1960
HOWARD W. JOHNSTONE
498

MAP FILE 2287-13

MAP FILE 2287-13