

SURVEY IN NE 1/4, SECTION 14, T26S, R4W, W.M.

COUNTY SURVEYORS FILE DATA
DO NOT REMOVE FROM OFFICE

FOR: LATTIE BROYHILL
BY: BHW ENGINEERING, INC.
1205 S.E. COURT
ROSEBURG, OREGON

FILED *BS*
RECEIVED *1**

MAR 10 1981

COUNTY SURVEYOR
DOUGLAS COUNTY, ORE.

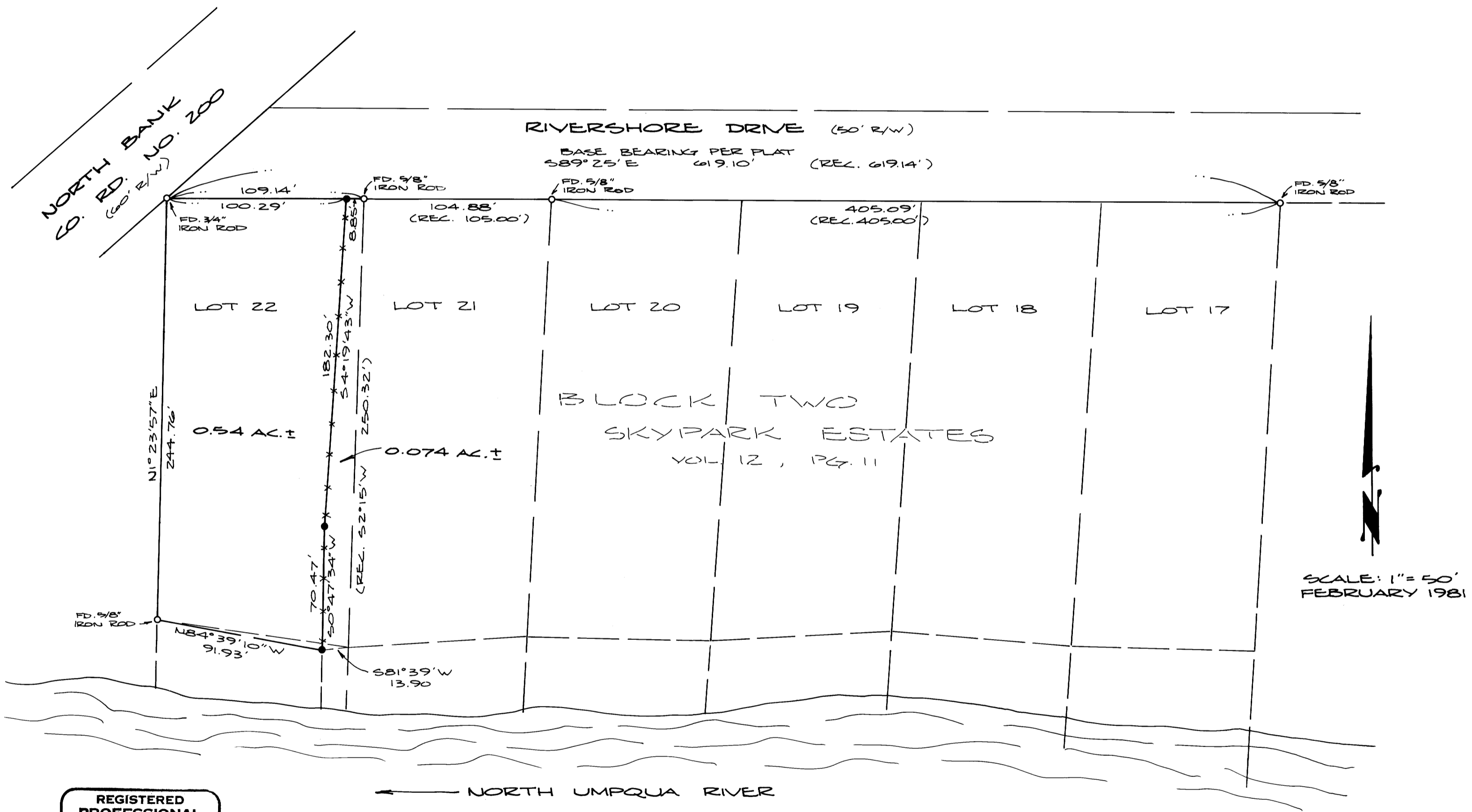
BS

NARRATIVE:

SURVEY TO TIE FENCELINE.
FIELD CREW: G. LANG & D. DELATTE.
EQUIPMENT: WILD T-1 MOUNTED WITH LEITZ RED-1 E.D.M.
OFFICE COMPUTATIONS & DRAFTING: R. WARE & D. HOPKINS.

LEGEND:

- - FOUND MONUMENT AS NOTED
- - SET 5/8" x 30" IRON ROD



REGISTERED
PROFESSIONAL
LAND SURVEYOR

Romanso E. Ware

OREGON
NOV. 16, 1973
ROMANSO E. WARE
1005

MBL-78

MBL-78