

SURVEY FOR U.S. FOREST SERVICE

COUNTY SURVEYORS FILE DATA
DO NOT REMOVE FROM OFFICE

FILED
RECEIVED *JRL*

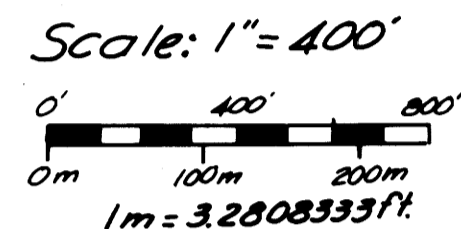
MAR 2 1981

COUNTY SURVEYOR
DOUGLAS COUNTY, ORE.

By
Baughman Technical Service, Inc.
5157 N. Umpqua Hwy.
Roseburg, Or. 97470
Feb. 1981

CADASTRAL SURVEY - GLIDE NO. 11412
Contract No. 53-04T1-1-10

SECTION 24, T.26S., R. 2 W., W.M.
Douglas County, Oregon



LEGEND

- Brass Cap Found
- Corner Found, Brass Cap Set
- Corner Computed, Not Set
- True Line Posted
- Corner Index No.

SURVEY NARRATIVE:

Survey History:

The East boundary of Section 24, T. 26 S., R. 2 W., W. M. was originally surveyed by John A. McQuinn, U. S. Deputy Surveyor under Contract No. 466 in 1883. Fred Mensch, U. S. Deputy Surveyor, retraced and resurveyed the East boundary of T. 26 S., R. 2 W., W. M. in 1910 under Contract No. 797. Mensch was unable to find the original Northeast and Southeast corners of Section 24 as set by McQuinn in 1883 and set new corners. In 1916, Mensch returned to retrace and resurvey the East boundary of Section 24 between original 1883 corners. Under this survey he established a witness corner North of the 1/4 Section Corner of Section 24 and South of the 1/4 Section Corner of Section 19, but the actual 1/4 section corners were not monumented since they both fell in the face of a rock bluff.

Survey Procedure:

The original Northeast and Southeast Section Corners, North and South Witness Corners and the Closing Corner for Sections 19 and 30 of T. 26 S., R. 1 W., W. M. were found. The Northeast and Southeast Section Corners as set by McQuinn in 1883 were treated as senior corners and control the East boundary of Section 24. The North and South Witness Corners were treated as junior corners and control only the position of the 1/4 Section Corners of Section 24, T. 26 S., R. 2 W., and Section 19, T. 26 S., R. 1 W. These corner positions fall in the face of a bluff and were not monumented. A closed loop random line traverse was run between all found corner points. All angles were measured with a Wild T1A theodolite and distances were measured with a Hewlett-Packard HP 3805 electronic distance measuring instrument or a 300 ft. steel tape. The basis of bearings is the 1916 retracement record between the Northeast and Southeast Section Corners. Carsonite Posts with U. S. F. S. 54-2 signs, Property Boundary, National Forest Land Behind This Sign, were set on the posted property lines.

Corner Descriptions:

All new bearing trees have a double blaze with a brass washer stamped "LS 397" nailed into the lower blaze, a 6" red band painted around the tree, both upper and lower blazes painted red. All bearing trees have a U. S. F. S. 53-3 (BT) sign and U. S. F. S. 54-4, (Warning Against Destroying Monuments) sign attached.

1. Fd: 1" iron pipe, firmly set, 15" above the ground, in a 2 ft. diameter mound of stone with a 2 1/2" brass cap marked:

COUNTY SURVEYOR'S OFFICE

R	T26S	R
2	S13	1
W	S24	W
	1963	

from which the original bearing trees:
a 24" Douglas fir with healed blaze bears N. 67° W., 9.2 ft. (Rec. N. 60° W.)
a 22" Douglas fir with rotted upper blaze and healed lower blaze bears S. 27° W., 7.9 ft. (Rec. S. 14° W.)
and bearing trees marked by Godfrey, Douglas County Surveyor's Office in 1963:
a 9" Douglas fir with healed blaze bears S. 63° W. 11.4 ft.

2. Fd: 1" iron post, firmly set, 4" above the ground with a 2 1/2" brass cap marked:

U. S. GENERAL LAND OFFICE SURVEY

	1/4	
	S24	
	W.C.	
	1916	

from which the bearing tree:
a 43" Douglas fir snag, with no scribing visible on rotted blaze bears N. 63° W., 35.6 ft.
a protruding point of bluff with no original chisel marks visible, re-marked "X B0" bears S. 59° W., 3.7 ft. (Rec. S. 51° W., 4.0 ft.). A 4" X 4" X is at the exact bearing point.
and new bearing trees:
a 10" Hemlock bears N. 13° W., 16.9 ft., scribed "X BT" on a double blaze with brass washer stamped "LS 397" nailed into lower blaze.

3. Set: 2" X 30" iron pipe, 18" in the ground on solid rock, in a 3 ft. diameter times 2 ft. high mound of stone with a 3" brass cap marked:

R2W	R1W
	1/4 W.C.
	S19
	1981
	LS 397

from which an original bearing tree:
a 15" Cedar, opened to find scribe marks "1/4 S19" visible bears S. 24° E., 11.2 ft.
and new bearing trees:
a 7" Cedar bears S. 22° E., 51.2 ft., scribed "X BT"
a 12" Douglas fir bears N. 41° E., 13.2 ft., scribed "X BT"

4. Fd: 1" iron pipe, firmly set, 8" above the ground with a 2 1/2" brass cap marked:

DOUGLAS COUNTY SURVEYOR'S OFFICE

	T26S	
R	C.C.	R
2	S19	1
W	S30	W
	1966	

from which original bearing trees:
a 41" Douglas fir with scribe marks visible on a partially healed blaze bears N. 58° E., 9.2 ft.
a 20" Cedar with scribe marks "T26S R1W S30 CC BT" visible bears S. 87° E., 14.5 ft. (Rec. S. 81° E., 15.2 ft.)

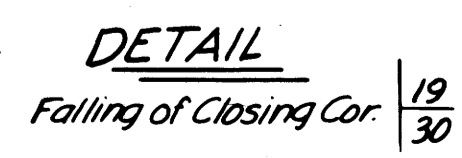
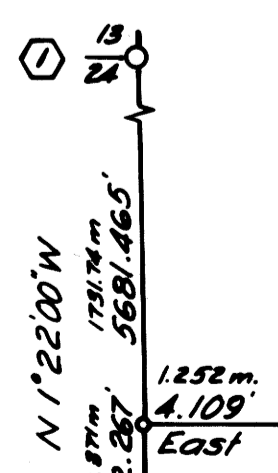
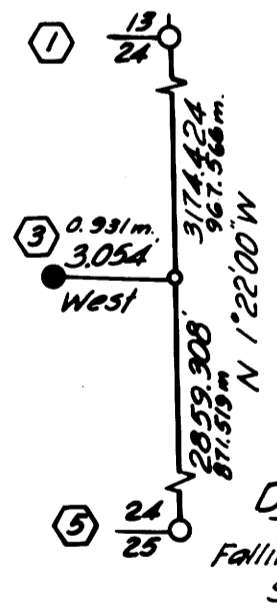
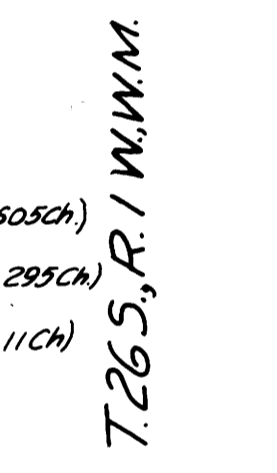
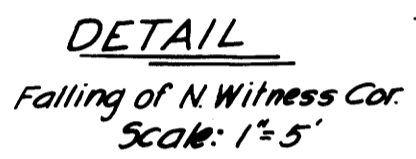
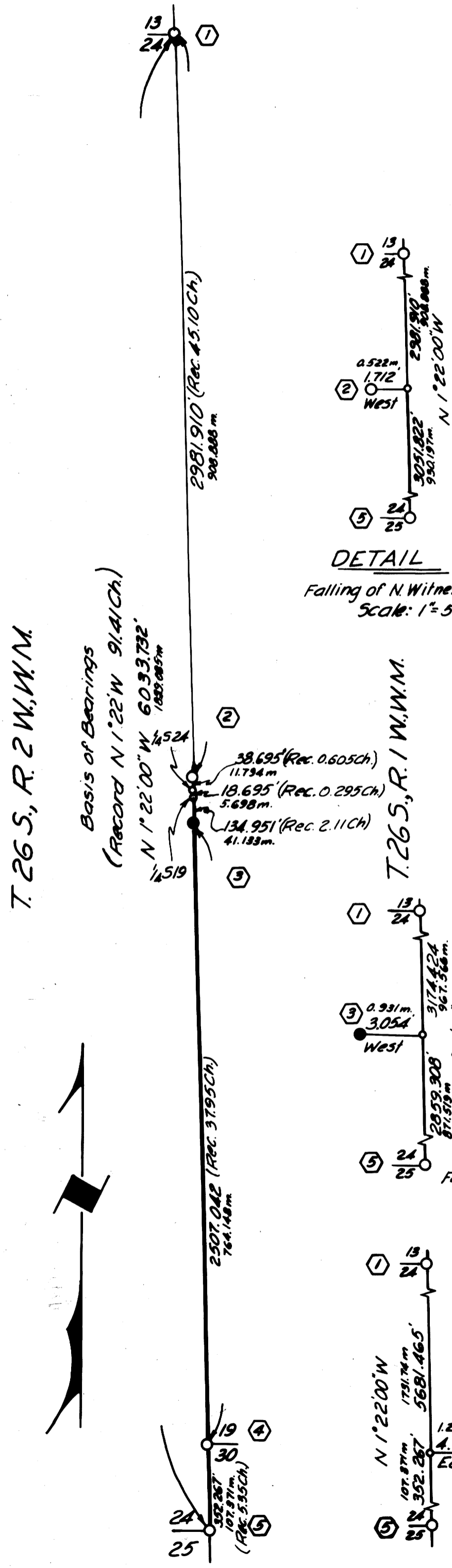
5. Fd: 3" iron post, firmly set, 8" above the ground with a 3 1/2" brass cap:

U. S. GENERAL LAND OFFICE SURVEY

	T26S	
R2W	R1W	
	S24	
	S25	
	1916	

from which original bearing trees:
a 31" Cedar with scribe marks visible on a partially healed blaze bears S. 80° W., 18.5 ft. (Record S. 74° W., 19.1 ft.)
a 40" Douglas fir with healed blaze bears N. 7° W., 70.0 ft.

George E. Smith



MAP FILE 86-88

MAP FILE 86-88