

N.W. SECTION CORNER

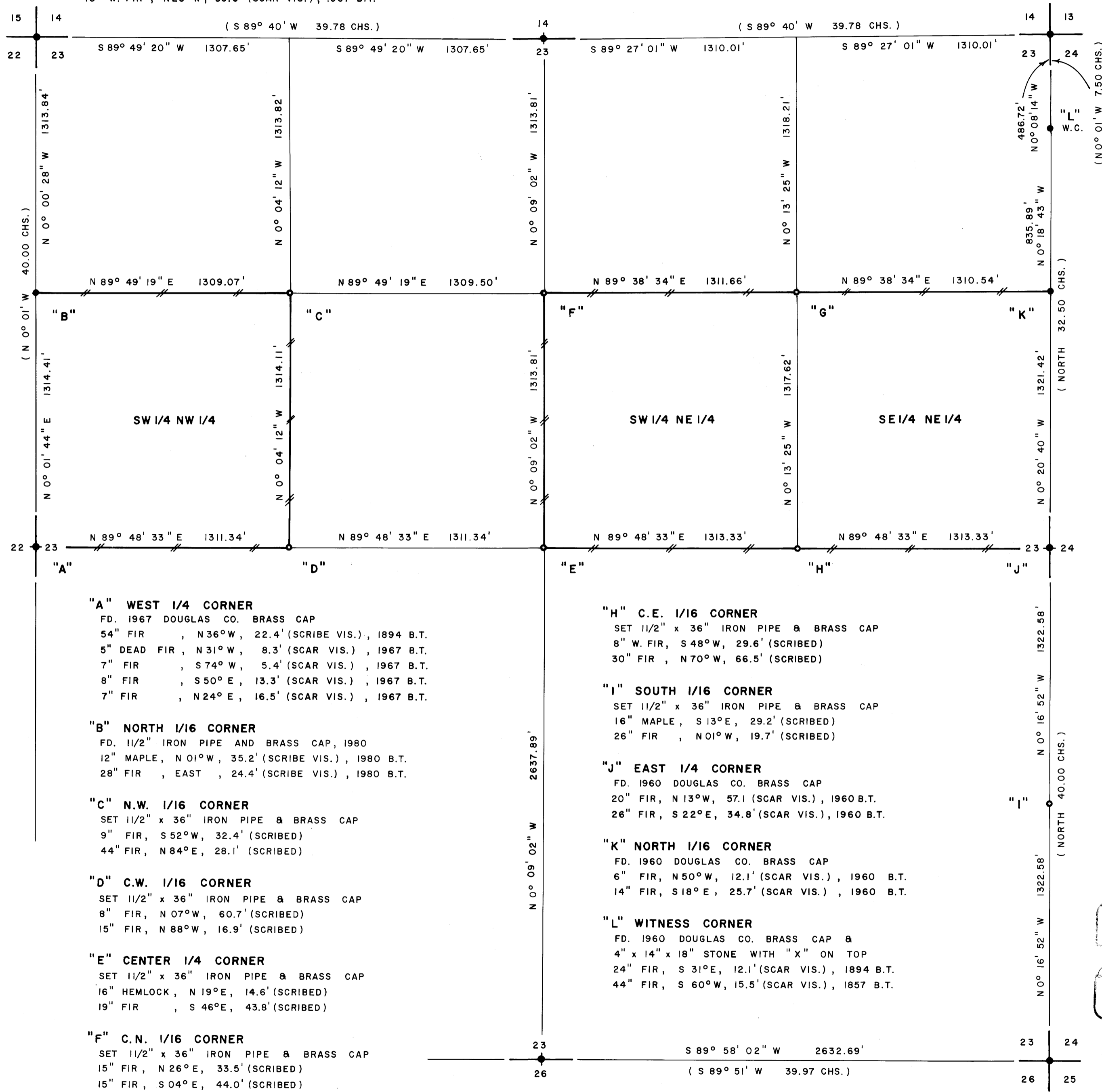
FD. 1967 DOUGLAS CO. BRASS CAP
42" FIR , N 05° E, 15.3' (SCAR VIS.) , 1894 B.T.
10" FIR , N 41° E, 54.8' (SCAR VIS.) , 1967 B.T.
13" FIR , S 43° E, 24.0' (SCAR VIS.) , 1967 B.T.
18" W. FIR , S 50° W, 24.5' (SCAR VIS.) , 1967 B.T.
18" W. FIR , N 26° W, 39.9' (SCAR VIS.) , 1967 B.T.

NORTH 1/4 CORNER

FD. 1967 DOUGLAS CO. BRASS CAP
11" MADRONE , S 72° E, 31.9' (SCRIBE VIS.) , 1894 B.T.
36" FIR , N 56° E, 9.2' (OPEN FACE) , 1894 B.T.
10" FIR , N 41° E, 25.1' (SCAR VIS.) , 1967 B.T.
12" FIR , S 26° E, 41.5' (SCAR VIS.) , 1967 B.T.

N.E. SECTION CORNER

FD. 1960 DOUGLAS CO. BRASS CAP
18" MAPLE , S 21° E, 30.5' (SCRIBE VIS.) , 1894 B.T.
20" FIR , N 86° E, 19.3' (SCAR VIS.) , 1894 B.T.
24" FIR , S 34° W, 18.9' (SCAR VIS.) , 1894 B.T.
36" FIR , N 84° W, 10.6' (SCAR VIS.) , 1894 B.T.



"A" WEST 1/4 CORNER

FD. 1967 DOUGLAS CO. BRASS CAP
54" FIR , N 36° W, 22.4' (SCRIBE VIS.) , 1894 B.T.
5" DEAD FIR , N 31° W, 8.3' (SCAR VIS.) , 1967 B.T.
7" FIR , S 74° W, 5.4' (SCAR VIS.) , 1967 B.T.
8" FIR , S 50° E, 13.3' (SCAR VIS.) , 1967 B.T.
7" FIR , N 24° E, 16.5' (SCAR VIS.) , 1967 B.T.

"B" NORTH 1/16 CORNER

FD. 11/2" IRON PIPE AND BRASS CAP, 1980
12" MAPLE, N 01° W, 35.2' (SCRIBE VIS.) , 1980 B.T.
28" FIR , EAST , 24.4' (SCRIBE VIS.) , 1980 B.T.

"C" N.W. 1/16 CORNER

SET 11/2" x 36" IRON PIPE & BRASS CAP
9" FIR, S 52° W, 32.4' (SCRIBED)
44" FIR, N 84° E, 28.1' (SCRIBED)

"D" C.W. 1/16 CORNER

SET 11/2" x 36" IRON PIPE & BRASS CAP
8" FIR, N 07° W, 60.7' (SCRIBED)
15" FIR, N 88° W, 16.9' (SCRIBED)

"E" CENTER 1/4 CORNER

SET 11/2" x 36" IRON PIPE & BRASS CAP
16" HEMLOCK, N 19° E, 14.6' (SCRIBED)
19" FIR , S 46° E, 43.8' (SCRIBED)

"F" C.N. 1/16 CORNER

SET 11/2" x 36" IRON PIPE & BRASS CAP
15" FIR , N 26° E, 33.5' (SCRIBED)
15" FIR , S 04° E, 44.0' (SCRIBED)

"G" N.E. 1/16 CORNER

SET 11/2" x 36" IRON PIPE & BRASS CAP
10" FIR , S 60° E, 107.0' (SCRIBED)
12" FIR , N 48° E, 34.1' (SCRIBED)

"H" C.E. 1/16 CORNER

SET 11/2" x 36" IRON PIPE & BRASS CAP
8" W. FIR, S 48° W, 29.6' (SCRIBED)
30" FIR , N 70° W, 66.5' (SCRIBED)

"I" SOUTH 1/16 CORNER

SET 11/2" x 36" IRON PIPE & BRASS CAP
16" MAPLE, S 13° E, 29.2' (SCRIBED)
26" FIR , N 01° W, 19.7' (SCRIBED)

"J" EAST 1/4 CORNER

FD. 1960 DOUGLAS CO. BRASS CAP
20" FIR, N 13° W, 57.1' (SCAR VIS.) , 1960 B.T.
26" FIR, S 22° E, 34.8' (SCAR VIS.) , 1960 B.T.

"K" NORTH 1/16 CORNER

FD. 1960 DOUGLAS CO. BRASS CAP
6" FIR, N 50° W, 12.1' (SCAR VIS.) , 1960 B.T.
14" FIR, S 18° E, 25.7' (SCAR VIS.) , 1960 B.T.

"L" WITNESS CORNER

FD. 1960 DOUGLAS CO. BRASS CAP &
4" x 14" x 18" STONE WITH "X" ON TOP
24" FIR, S 31° E, 12.1' (SCAR VIS.) , 1894 B.T.
44" FIR, S 60° W, 15.5' (SCAR VIS.) , 1857 B.T.

SOUTH 1/4 CORNER

FD. 1964 B.L.M. BRASS CAP
44" FIR STUMP, S 39° E, 24.0' (SCRIBE VIS.) , 1894 B.T.
15" FIR STUMP, N 38° W, 88.4' (SCAR VIS.) , 1964 B.T.
30" FIR STUMP, S 77° E, 51.5' (SCAR VIS.) , 1964 B.T.

S.E. SECTION CORNER

FD. 1960 DOUGLAS CO. BRASS CAP
16" FIR , S 25° E, 24.1' (SCAR VIS.) , 1894 B.T.
44" FIR STUMP, N 07° E, 50.3' (SCAR VIS.) , 1894 B.T.
22" FIR STUMP, N 42° W, 56.1' (SCRIBE VIS.) , 1960 B.T.
56" FIR STUMP, S 67° W, 46.3' (SCAR VIS.) , 1960 B.T.

FILED
RECEIVED

FEB 26 1981

COUNTY SURVEYOR
DOUGLAS COUNTY, OREGON

SURVEY OF
SECTION 23, T23S, R8W, W.M.
DOUGLAS COUNTY, OREGON
FOR
INTERNATIONAL PAPER COMPANY
BY
TRIANGLE ENGINEERING COMPANY
1262 LAWRENCE STREET
EUGENE, OREGON 97401
FEBRUARY 13, 1981

LEGEND

- CORNERS FOUND AND USED FOR CONTROL
- CORNERS SET
- LINES MARKED WITH RED PAINTED BLAZES, 1/2" x 60" IRON RODS AND RED RIBBON
- () DATA OF RECORD
- BASIS OF BEARING, SOLAR OBSERVATION
- DISTANCE TO BEARING TREES ARE CENTER MEASURE
- ALL BEARING TREES ARE SCRIBED
- SCALE 1" = 400'

NARRATIVE

I, LESLIE ROBERTS, REGISTERED PROFESSIONAL LAND SURVEYOR DO CERTIFY THAT I HAVE CORRECTLY SURVEYED SAID SECTION 23 IN ACCORDANCE TO THE MANUAL OF INSTRUCTIONS FOR THE SURVEY OF THE PUBLIC LANDS OF THE UNITED STATES. THE CENTER 1/4 CORNER WAS SET AT THE INTERSECTION OF THE N-S AND E-W CENTER LINES OF SECTION 23. THE N.W. 1/16 CORNER WAS SET AT THE INTERSECTION OF THE N-S AND E-W CENTER LINES OF SAID N.W. 1/4. THE N.E. 1/16 CORNER WAS SET AT THE INTERSECTION OF THE N-S AND E-W CENTER LINES OF SAID N.E. 1/4. THE C.W. 1/16 CORNER WAS SET HALF-WAY BETWEEN THE CENTER 1/4 CORNER AND THE WEST 1/4 CORNER. THE C.N. 1/16 CORNER WAS SET HALF-WAY BETWEEN THE CENTER 1/4 CORNER AND THE NORTH 1/4 CORNER. THE C.E. 1/16 CORNER WAS SET HALF-WAY BETWEEN THE CENTER 1/4 CORNER AND THE EAST 1/4 CORNER. THE SOUTH 1/16 CORNER BETWEEN SECTIONS 23 AND 24 WAS SET AT PROPORTIONATE MEASURE BETWEEN THE EAST 1/4 CORNER AND THE S.E. SECTION CORNER. A CLOSED MEANDER TRANSIT AND E.D.M. TRAVERSE WAS RUN BETWEEN ALL FOUND CORNERS AND USED FOR CONTROL. A CLOSED MEANDER TRANSIT TRAVERSE WAS RUN AROUND THE SW 1/4 NW 1/4 AND AROUND THE S 1/2 NE 1/4 OF SECTION 23. OFFSETS WERE COMPUTED FROM THIS MEANDER TRAVERSE TO THE TRUE PROPERTY LINE.

Leslie Roberts

COUNTY SURVEYORS FILE DATA
DO NOT REMOVE FROM OFFICE

MAP FILE M86-6