

**N.W. SECTION CORNER**  
 FD. 1967 DOUGLAS CO. BRASS CAP  
 36" FIR SNAG, S 66° E, 11.5' (SCAR VIS.), 1894 B.T.  
 24" FIR, N 72° W, 22.1' (SCAR VIS.), 1894 B.T.  
 5" W. FIR, N 49° E, 22.8' (SCAR VIS.), 1967 B.T.  
 6" FIR STUB, S 20° W, 19.6' (SCAR VIS.), 1967 B.T.  
 8" FIR, S 70° W, 16.7' (SCAR VIS.), 1967 B.T.  
 15" FIR, S 82° W, 7.5' (SCAR VIS.), — B.T.

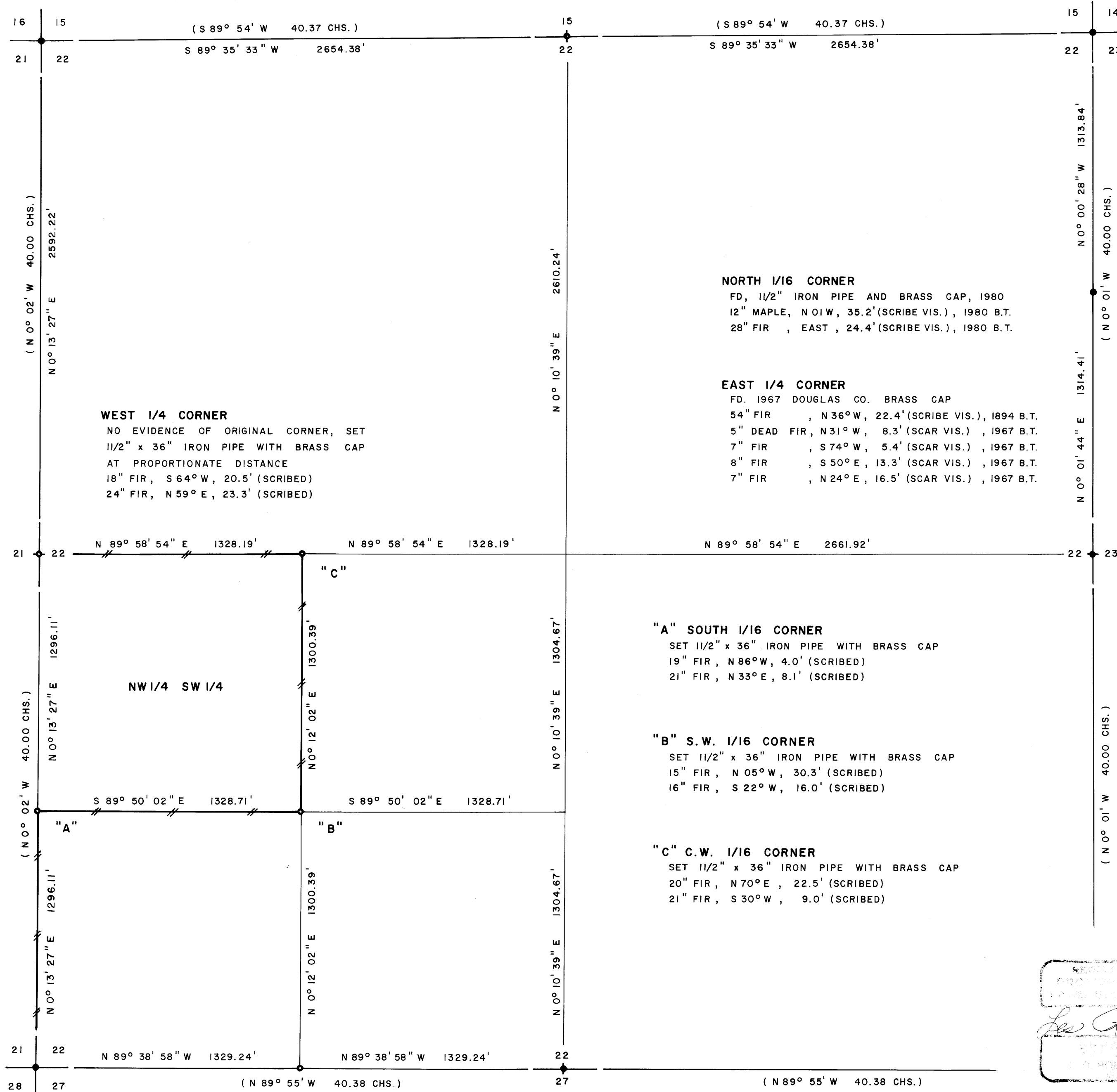
**NORTH 1/4 CORNER**  
 NO EVIDENCE OF ORIGINAL CORNER, SET  
 1 1/2" x 36" IRON PIPE WITH BRASS CAP  
 AT PROPORTIONATE DISTANCE  
 44" FIR, S 18° W, 86.0' (SCRIBED)  
 36" FIR, N 77° W, 24.7' (SCRIBED)

**N.E. SECTION CORNER**  
 FD. 1967 DOUGLAS CO. BRASS CAP  
 42" FIR, N 05° E, 15.3' (SCAR VIS.), 1894 B.T.  
 10" FIR, N 41° E, 54.8' (SCAR VIS.), 1967 B.T.  
 13" FIR, S 43° E, 24.0' (SCAR VIS.), 1967 B.T.  
 18" W. FIR, S 50° W, 24.5' (SCAR VIS.), 1967 B.T.  
 18" W. FIR, N 26° W, 39.9' (SCAR VIS.), 1967 B.T.

FILED  
 RECEIVED 1/18

FEB 26 1981

COUNTY SURVEYOR  
 DOUGLAS COUNTY, ORE



**SURVEY OF**  
**SECTION 22, T23S, R 8 W, W.M.**  
**DOUGLAS COUNTY, OREGON**  
 FOR  
**INTERNATIONAL PAPER COMPANY**  
 BY  
**TRIANGLE ENGINEERING COMPANY**  
 1262 LAWRENCE STREET  
 EUGENE, OREGON 97401  
**JANUARY 26, 1981**

**LEGEND**

- CORNERS FOUND AND USED FOR CONTROL
- CORNERS SET
- //— LINES MARKED WITH RED PAINTED BLAZES, 1/2" x 60" IRON RODS, AND RED RIBBON
- ( ) DATA OF RECORD
- BASIS OF BEARING, SOLAR OBSERVATION
- DISTANCE TO BEARING TREES ARE CENTER MEASURE
- ALL BEARING TREES ARE SCRIBED
- SCALE 1" = 400'

**NARRATIVE**

I, LESLIE ROBERTS, REGISTERED PROFESSIONAL LAND SURVEYOR DO CERTIFY THAT I HAVE CORRECTLY SURVEYED SAID SECTION 22 IN ACCORDANCE TO THE MANUAL OF INSTRUCTIONS FOR THE SURVEY OF THE PUBLIC LANDS OF THE UNITED STATES. THE NORTH 1/4 CORNER WAS SET AT PROPORTIONATE MEASURE BETWEEN THE N.E. AND THE N.W. SECTION CORNERS. THE WEST 1/4 CORNER WAS SET AT PROPORTIONATE MEASURE BETWEEN THE N.W. AND THE S.W. SECTION CORNERS. THE CENTER 1/4 CORNER WAS DETERMINED BY INTERSECTING THE N-S AND E-W CENTER LINES OF SECTION 22. THE S.W. 1/16 CORNER WAS SET AT THE INTERSECTION OF THE N-S AND E-W CENTER LINES OF SAID S.W. 1/4. THE WEST 1/16 CORNER BETWEEN SECTIONS 22 AND 27 WAS SET AT PROPORTIONATE MEASURE BETWEEN THE SOUTH 1/4 CORNER AND THE S.W. SECTION CORNER. THE SOUTH 1/16 CORNER BETWEEN SECTIONS 21 AND 22 WAS SET AT PROPORTIONATE MEASURE BETWEEN THE WEST 1/4 CORNER AND THE S.W. SECTION CORNER. THE C.W. 1/16 CORNER WAS SET HALF-WAY BETWEEN THE CENTER 1/4 CORNER AND THE WEST 1/4 CORNER. A CLOSED MEANDER TRANSIT AND E.D.M. TRAVERSE WAS RUN BETWEEN ALL FOUND CORNERS AND USED FOR CONTROL. A CLOSED MEANDER TRANSIT TRAVERSE WAS RUN AROUND THE NW 1/4 SW 1/4 OF SECTION 22 AND OFFSETS WERE COMPUTED FROM THIS MEANDER TRAVERSE TO THE TRUE PROPERTY LINE.

LES ROBERTS  
 REGISTERED PROFESSIONAL LAND SURVEYOR  
 OREGON

**S.W. SECTION CORNER**  
 FD, 1974 DOUGLAS CO. BRASS CAP IN ROCK FACE  
 15" FIR, N 20° E, 34.5' (SCAR VIS.), 1974 B.T.  
 11" FIR, S 17° E, 26.9' (SCAR VIS.), 1974 B.T.  
 12" FIR, S 66° W, 34.9' (SCAR VIS.), 1974 B.T.  
 14" FIR, N 72° W, 21.7' (SCAR VIS.), 1974 B.T.

**WEST 1/16 CORNER**  
 SET 1 1/2" x 36" IRON PIPE WITH BRASS CAP  
 16" YEW STUMP, S 65° E, 42.1' (SCRIBED)  
 12" HEMLOCK, N 12° W, 22.7' (SCRIBED)

**SOUTH 1/4 CORNER**  
 FD, 1974 DOUGLAS CO. BRASS CAP AND  
 10" x 12" x 14" STONE MARKED "1/4"  
 13" CEDAR, N 63° E, 41.6' (SCRIBED VIS.), 1974 B.T.  
 12" HEM., S 31° E, 3.4' (SCRIBED VIS.), 1974 B.T.

COUNTY SURVEYORS FILE DATA  
 DO NOT REMOVE FROM OFFICE

MAP FILE M86-65

MAP FILE M86-65