

MAP FILE 1286-67

SURVEY OF  
SECTION 24, T23S, R8W, W.M.  
DOUGLAS COUNTY, OREGON  
FOR  
INTERNATIONAL PAPER COMPANY  
BY  
TRIANGLE ENGINEERING COMPANY  
1262 LAWRENCE STREET  
EUGENE, OREGON 97401  
FEBRUARY 20, 1981

LEGEND

- CORNERS FOUND AND USED FOR CONTROL
- CORNERS SET
- //— LINES MARKED WITH RED PAINTED BLAZES, 1/2" x 60" IRON RODS AND RED RIBBON
- ( ) DATA OF RECORD
- BASIS OF BEARING, SOLAR OBSERVATION
- DISTANCE TO BEARING TREES ARE CENTER MEASURE
- ALL BEARING TREES ARE SCRIBED
- SCALE 1" = 400'

NARRATIVE

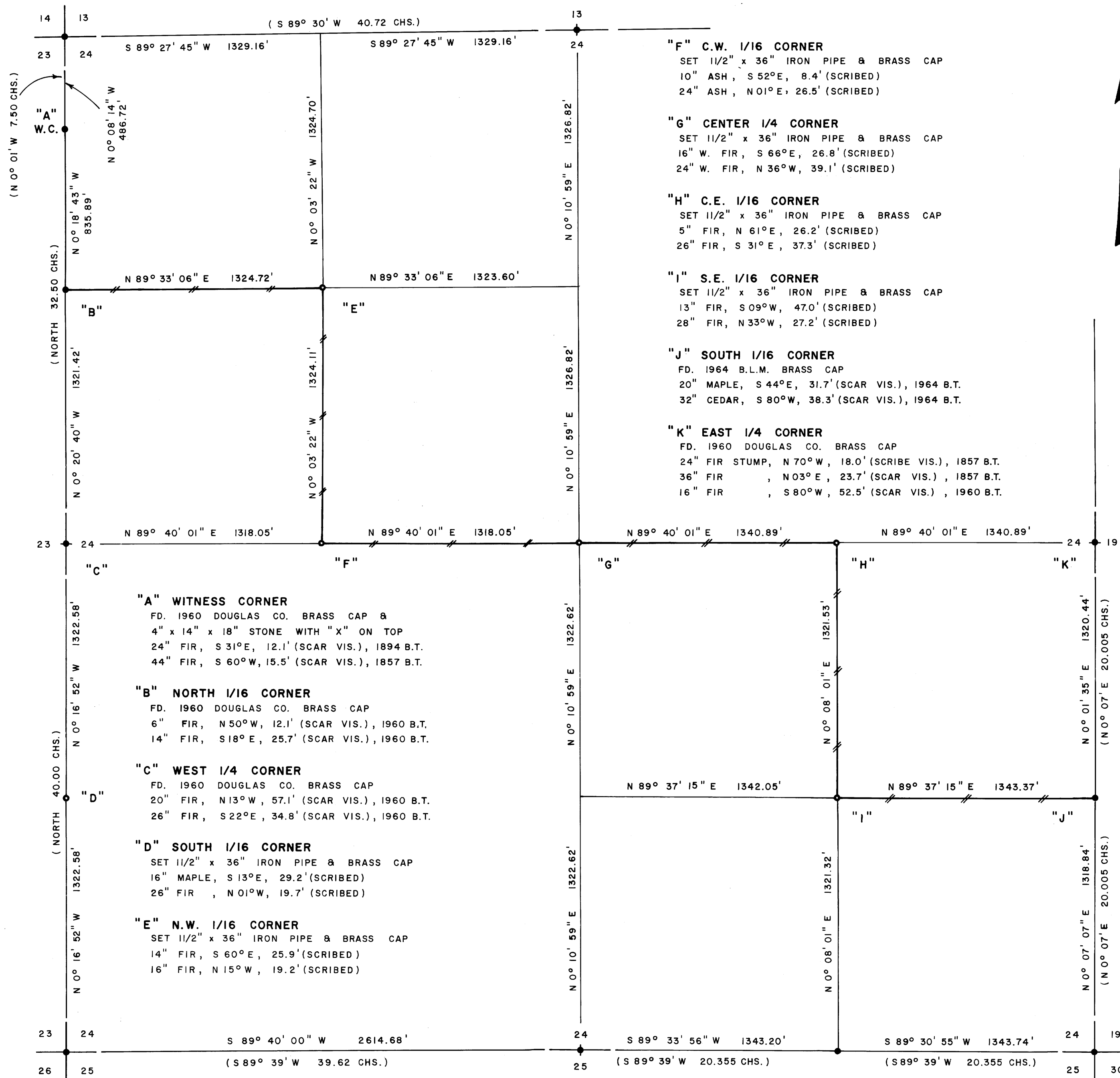
I, LESLIE ROBERTS, REGISTERED PROFESSIONAL LAND SURVEYOR DO CERTIFY THAT I HAVE CORRECTLY SURVEYED SAID SECTION 24 IN ACCORDANCE TO THE MANUAL OF INSTRUCTIONS FOR THE SURVEY OF THE PUBLIC LANDS OF THE UNITED STATES. THE CENTER 1/4 CORNER WAS SET AT THE INTERSECTION OF THE N-S AND E-W CENTER LINES OF SECTION 24. THE C.W. 1/16 CORNER AND THE C.E. 1/16 CORNER WERE SET HALF-WAY BETWEEN THE CENTER 1/4 CORNER AND THE WEST 1/4 SECTION CORNER AND THE EAST 1/4 SECTION CORNER RESPECTIVELY. THE N.W. 1/16 CORNER WAS SET AT THE INTERSECTION OF THE N-S AND E-W CENTER LINES OF SAID N.W. 1/4. THE S.E. 1/16 CORNER WAS SET AT THE INTERSECTION OF THE N-S AND E-W CENTER LINES OF SAID S.E. 1/4. A CLOSED MEANDER TRANSIT AND E.D.M. TRAVERSE WAS RUN BETWEEN ALL FOUND CORNERS AND USED FOR CONTROL. A CLOSED MEANDER TRANSIT TRAVERSE WAS RUN THRU THE INTERIOR OF SECTION 24 AS SHOWN. OFFSETS WERE COMPUTED FROM THIS MEANDER TRAVERSE TO THE TRUE PROPERTY LINE.

N.W. SECTION CORNER

FD. 1960 DOUGLAS CO. BRASS CAP  
18" MAPLE, S 21° E, 30.5' (SCRIBE VIS.), 1894 B.T.  
20" FIR, N 86° E, 19.3' (SCAR VIS.), 1894 B.T.  
24" FIR, S 34° W, 18.9' (SCAR VIS.), 1894 B.T.  
36" FIR, N 84° W, 10.6' (SCAR VIS.), 1894 B.T.

NORTH 1/4 CORNER

FD. 1967 DOUGLAS CO. BRASS CAP  
26" FIR STUMP, S 64° W, 33.0' (SCRIBE VIS.), 1896 B.T.  
26" FIR, N 16° W, 9.2' (SCAR VIS.), 1896 B.T.  
16" FIR, S 27° W, 77.9' (SCAR VIS.), 1967 B.T.  
24" FIR, N 30° E, 36.4' (SCAR VIS.), 1967 B.T.



S.W. SECTION CORNER

FD. 1960 DOUGLAS CO. BRASS CAP  
16" FIR, S 25° E, 24.1' (SCAR VIS.), 1894 B.T.  
44" FIR STUMP, N 07° E, 50.3' (SCAR VIS.), 1894 B.T.  
22" FIR STUMP, N 42° W, 56.1' (SCRIBE VIS.), 1960 B.T.  
56" FIR STUMP, S 67° W, 46.3' (SCAR VIS.), 1960 B.T.

SOUTH 1/4 CORNER

FD. 1964 B.L.M. BRASS CAP  
40" FIR, N 12° E, 60.8' (SCAR VIS.), 1964 B.T.  
44" FIR, S 02° W, 42.3' (SCAR VIS.), 1964 B.T.

EAST 1/16 CORNER

FD. 1964 B.L.M. BRASS CAP  
31" FIR, N 75° E, 17.9' (SCAR VIS.), 1964 B.T.  
34" FIR, S 08° W, 19.7' (SCAR VIS.), 1964 B.T.

S.E. SECTION CORNER

FD. 1964 B.L.M. BRASS CAP  
22" FIR, N 06° E, 268.0' (SCAR VIS.), 1964 B.T.  
38" FIR, N 39° W, 376.9' (SCAR VIS.), 1964 B.T.

Leslie Roberts