

Resurvey of S 1/2 of Section 4, T 31 S, R 7 W, W. M., Oregon

For Roseburg Lumber Company

February 6, 1981

FILED BS
RECEIVED BS

FEB 25 1981

COUNTY SURVEYOR
DOUGLAS COUNTY, ORE.

M 86-62

Scale: 1" = 400'

Legend

- Found Brass Cap
- Set Iron Rod & Alum. Cap
- Set Iron Rod
- Line Referenced to Alum. Tags
- () 1918 Retracement by Gerald A. Sorrels
- - - Approximate Property Line



Bearings Based on Solar Observation

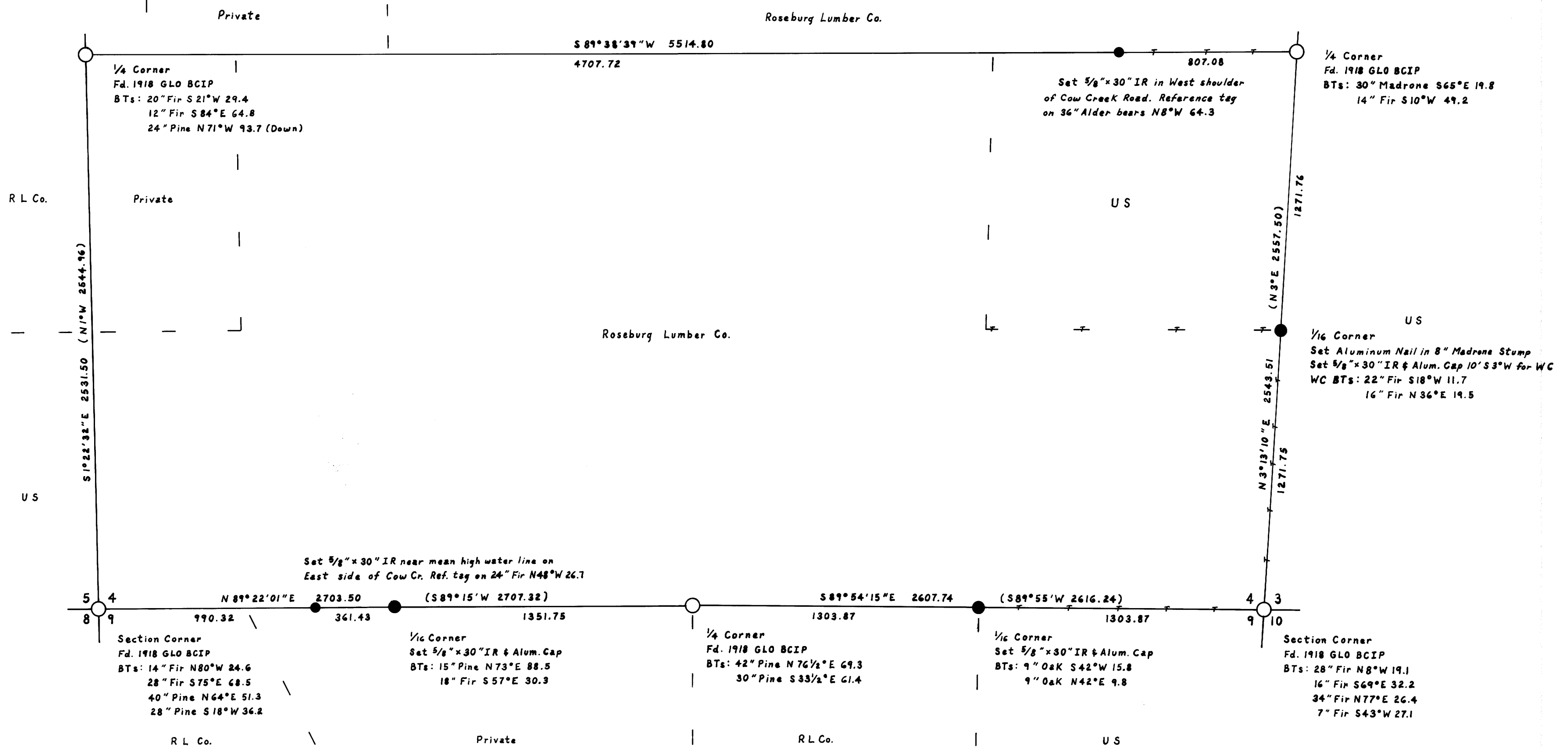
I ran a closed traverse in Section 4 using a Jena 1 second theodolite and a Mac I-E EDM. I achieved a precision of 1:23,966 and adjusted the traverse by the Crandall method. I set the corners by standard subdivision procedure based on the location of the existing monuments.

Howard W. Johnstone P.O. Box 1088 Roseburg, Oregon

REGISTERED
PROFESSIONAL
LAND SURVEYOR

Howard W. Johnstone

OREGON
MAY 13, 1960
HOWARD W. JOHNSTONE
498



MAP FILE M 86-62