

COUNTY SURVEYORS FILE DATA  
DO NOT REMOVE FROM OFFICE

FILED *BS*  
RECEIVED *BS*

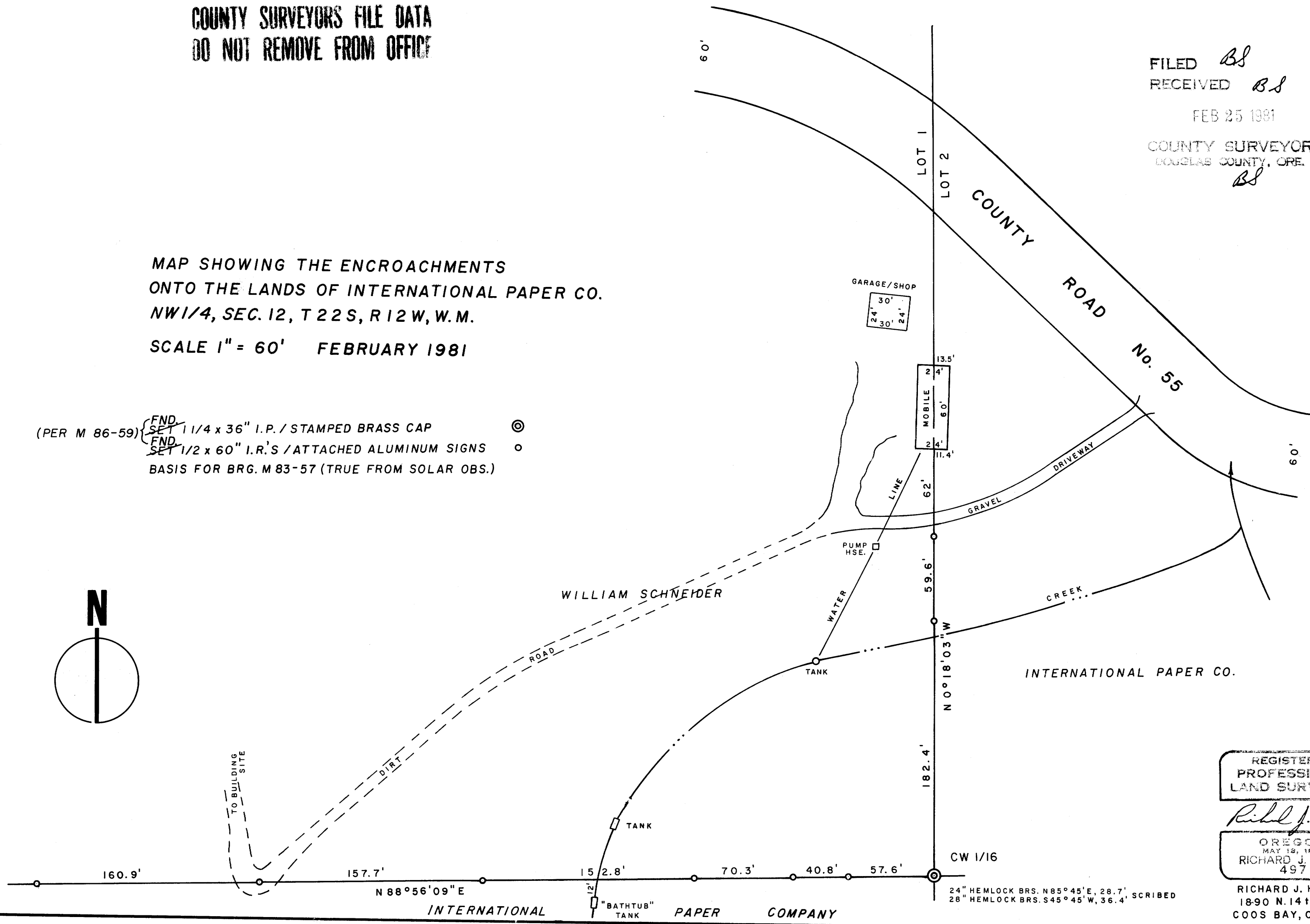
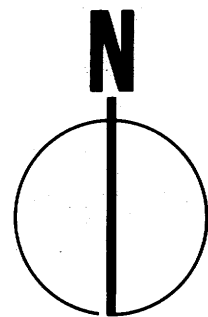
FEB 25 1981

COUNTY SURVEYOR  
DOUGLAS COUNTY, ORE.  
*BS*

MAP SHOWING THE ENCROACHMENTS  
ONTO THE LANDS OF INTERNATIONAL PAPER CO.  
NW 1/4, SEC. 12, T 22 S, R 12 W, W.M.

SCALE 1" = 60' FEBRUARY 1981

(PER M 86-59) { FND SET 1 1/4 x 36" I.P. / STAMPED BRASS CAP  
FND SET 1/2 x 60" I.R.'S / ATTACHED ALUMINUM SIGNS  
BASIS FOR BRG. M 83-57 (TRUE FROM SOLAR OBS.)



REGISTERED  
PROFESSIONAL  
LAND SURVEYOR

*Richard J. Hintz*

OREGON  
MAY 12, 1960  
RICHARD J. HINTZ  
497

RICHARD J. HINTZ  
1890 N. 14th ST.  
COOS BAY, OREGON

CW 1/16  
24" HEMLOCK BRS. N 85° 45' E, 28.7', SCRIBED  
26" HEMLOCK BRS. S 45° 45' W, 36.4'

MAP FILE *M 86-61*

MAP FILE *M 86-61*