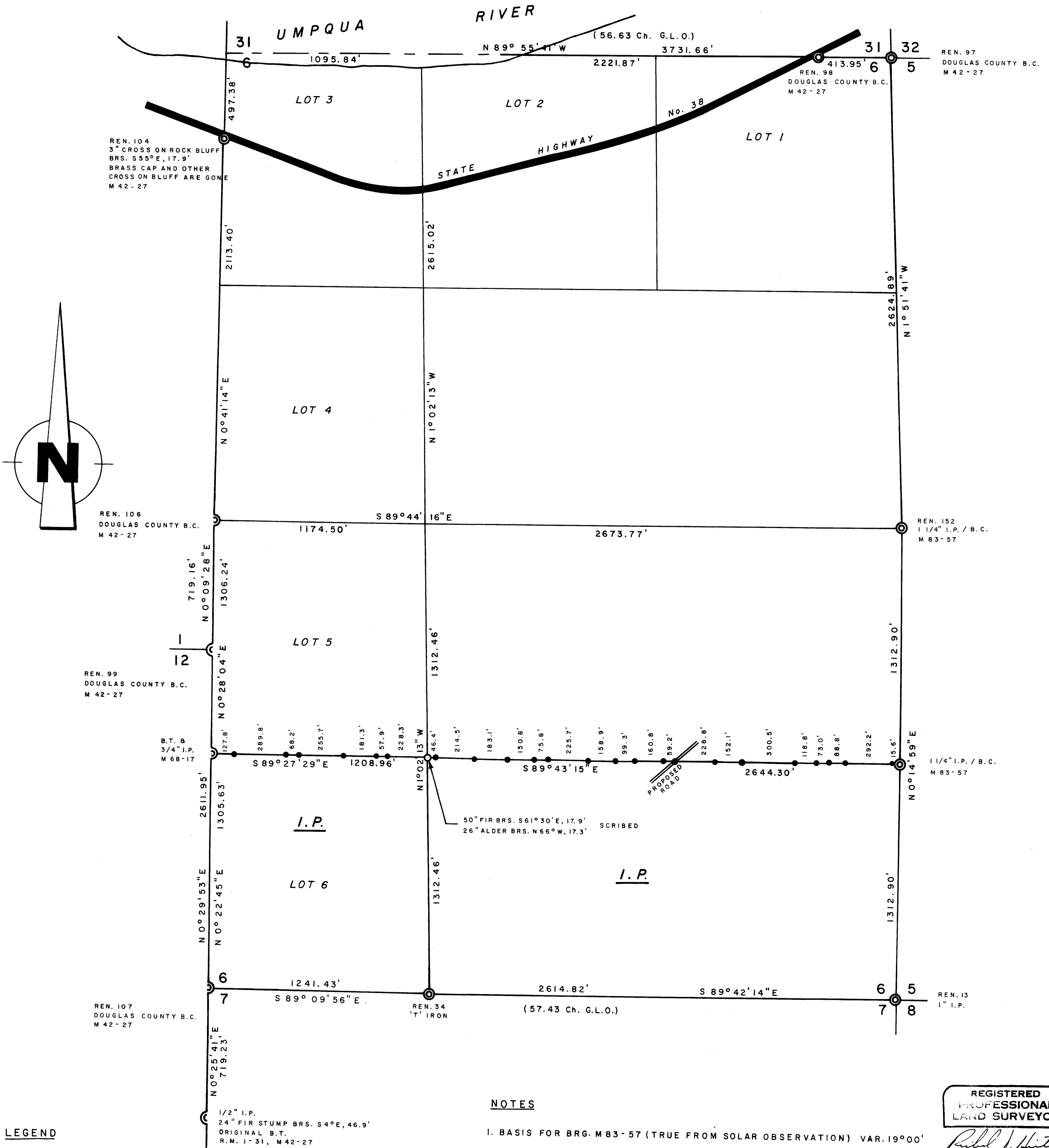


COUNTY SURVEYORS FILE DATA
DO NOT REMOVE FROM OFFICE

PROPERTY SURVEY FOR INTERNATIONAL PAPER CO.

SEC. 6, T22 S, R11 W
SCALE 1" = 400' JAN. 1981

FILED *BS*
RECEIVED *JK*
FEB 24 1981
COUNTY SURVEYOR
DOUGLAS COUNTY, ORE.
BS



LEGEND

CORNERS FOUND 

SET 1 1/4 x 3/16" I.P. / STAMPED BRASS CAP 

PROPERTY LINE ESTABLISHED, 1/2 x 60" I.R.'S WITH ATTACHED ALUMINUM SIGNS 

NOTES

1. BASIS FOR BRG. M83-57 (TRUE FROM SOLAR OBSERVATION) VAR. 19°00'
2. DISTANCES ARE TAKEN TO A 50d NAIL IN THE FACE OF EACH BEARING TREE.
3. THIS SURVEY WAS MADE IN ACCORDANCE WITH THE B.L.M. MANUAL OF SURVEY INSTRUCTIONS.

REGISTERED
PROFESSIONAL
LAND SURVEYOR

Richard J. Hintz

OREGON
MAY 19, 1980
RICHARD J. HINTZ
497

RICHARD J. HINTZ
1890 N. 14TH ST.
COOS BAY, OREGON