

COUNTY SURVEYORS FILE DATA
DO NOT REMOVE FROM OFFICE

SURVEY TO ESTABLISH PROPERTY CORNERS

In the NE 1/4 & the SE 1/4 of Sec. 2 T. 21 S., R. 11 W., W.M.

Douglas County, Oregon

January 1981²⁻¹¹⁻⁸¹
(per C.S. 6.)

FILED BS
RECEIVED BS

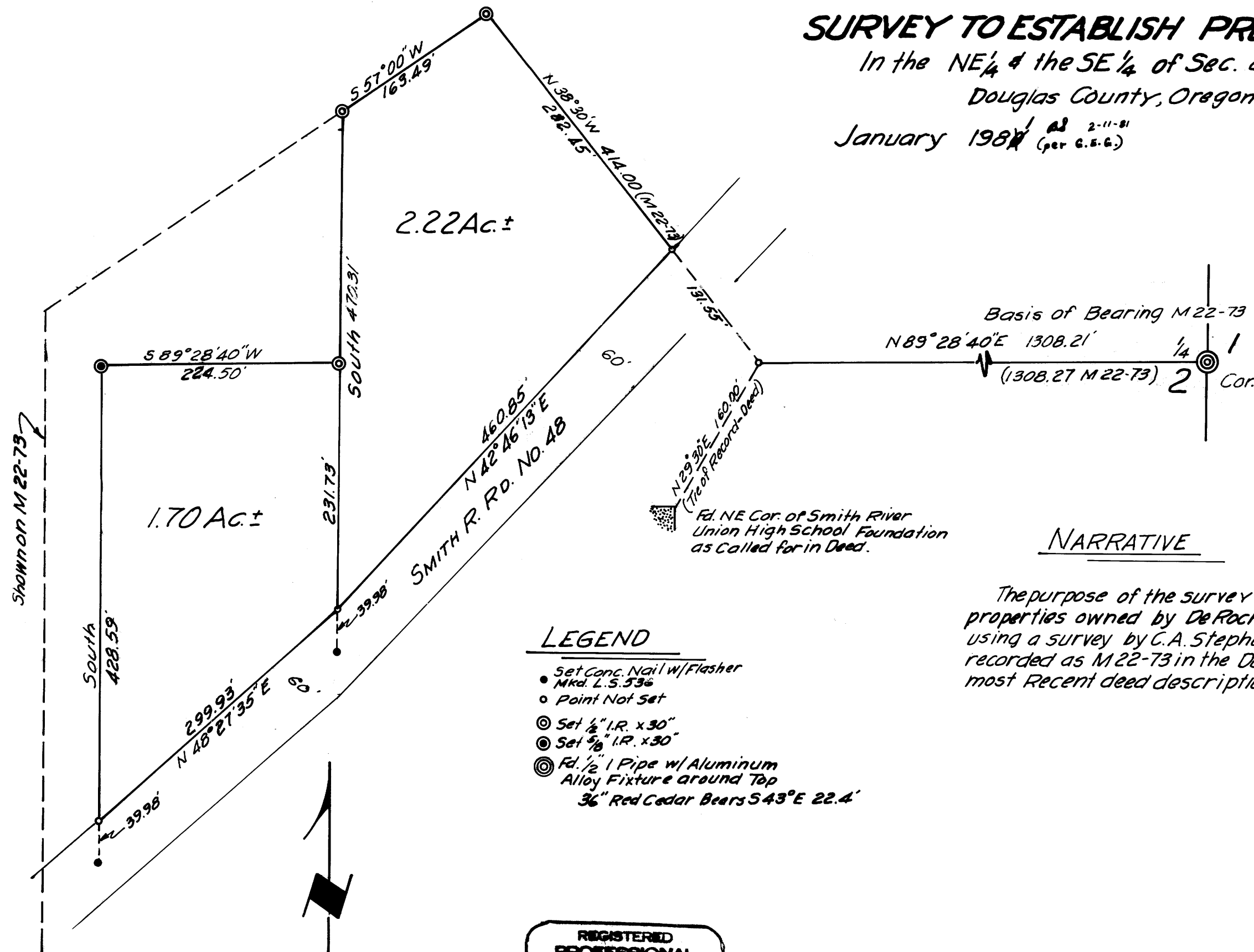
FEB 11 1981

COUNTY SURVEYOR
DOUGLAS COUNTY, ORE.
BS

Scale: 1" = 100'

For: Eve DeRock

By: Baughman Technical Services, Inc.
P.O. Box 222
Roseburg, Or. 97470



NARRATIVE

The purpose of the survey was to monument those parts of those properties owned by DeRock & Lewis northwesterly of the Smith River Rd., using a survey by C.A. Stephens for Coos Head Timber in Aug. of 1965 recorded as M 22-73 in the Douglas County Surveyors Office, and the most recent deed descriptions as reference.

LEGEND

- Set Conc. Nail w/Flasher
Mkd. L.S. 536
- Point Not Set
- ⊙ Set 1/2" I.R. x 30"
- ⊙ Set 3/8" I.R. x 30"
- ⊙ Fd. 1/2" Pipe w/ Aluminum Alloy Fixture around Top
36" Red Cedar Bears S 43° E 22.4'

REGISTERED
PROFESSIONAL
LAND SURVEYOR

George E. Ornd

OREGON
1981
GEORGE E. ORNDS
397

MAP FILE M 86-51

MAP FILE M 86-51