

# SURVEY OF A PORTION OF LOT 14, FRUITVALE ADD. IN THE N.E. 1/4 OF SECTION 13, T27S, R6W, W.M.

SURVEY BY: BAUGHMAN TECHNICAL SERVICES  
5157 N. UMPQUA HWY.  
ROSEBURG, OREGON 97470

FOR: IRV KLINE  
1494 N.E. STEPHENS  
ROSEBURG, OREGON 97470

FILED *BS*  
RECEIVED *JK*

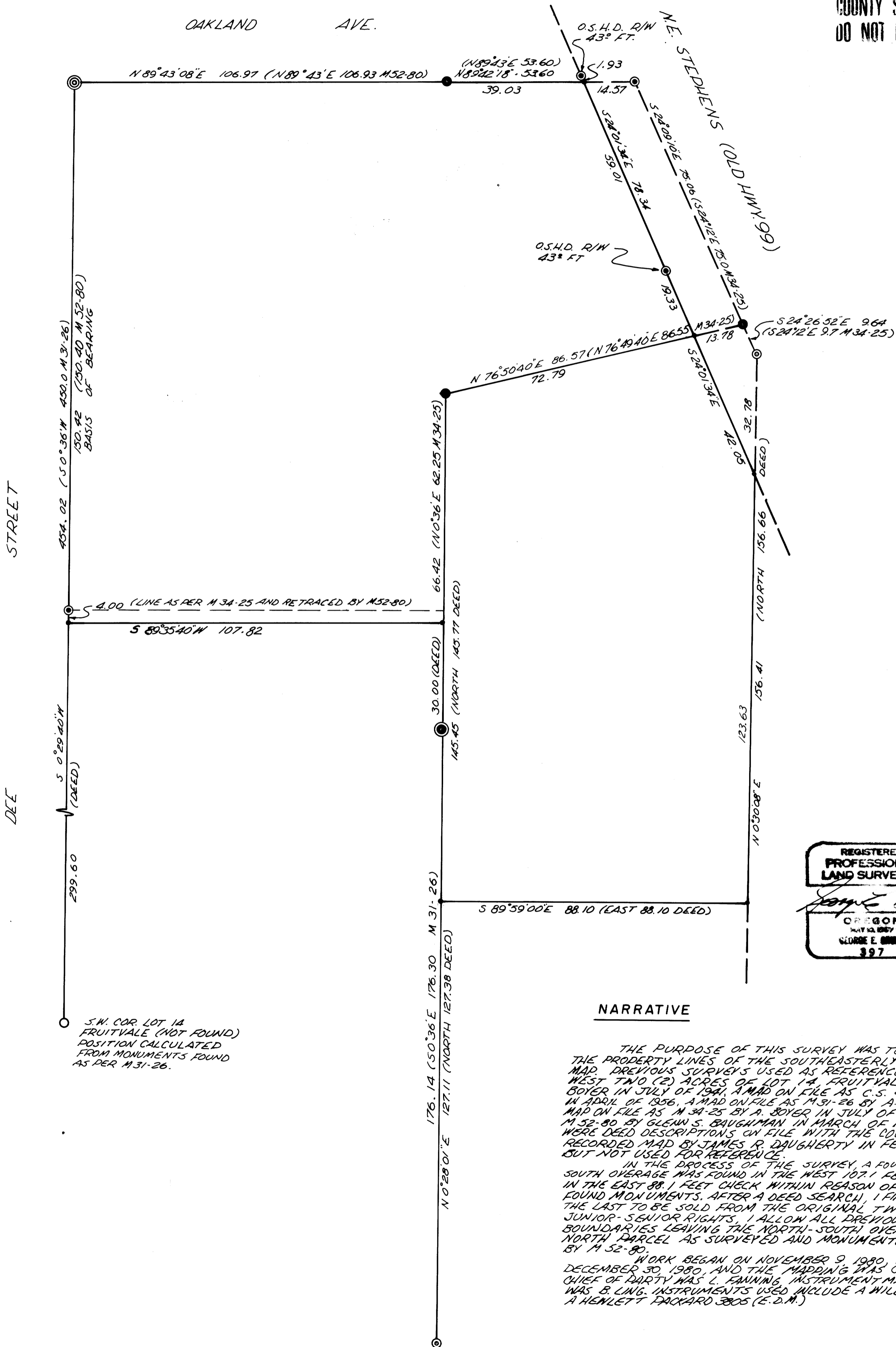
FEB 4 1981

COUNTY SURVEYOR  
DOUGLAS COUNTY, OREGON

SCALE: 1" = 20'

JANUARY 1981

COUNTY SURVEYORS FILE DATA  
DO NOT REMOVE FROM OFFICE



REGISTERED  
PROFESSIONAL  
LAND SURVEYOR

*George E. Ginn*

OREGON  
MAY 13, 1967  
GEORGE E. GINN  
897

