

MAP FILE 1986-42

Resurvey of Section 18 and a Portion of Section 20 in T 31 S, R 3 W, W. M.

For Roseburg Lumber Co. December 17, 1980

FILED *BS*
RECEIVED *KM*
JAN 30 1981
COUNTY SURVEYOR
DOUGLAS COUNTY, ORE.

Scale 1" = 500'

Legend

- Monument Found
- Tree Monument Found
- Monument Set
- Line Blazed and Referenced to Metal Tags
- Line Not Marked



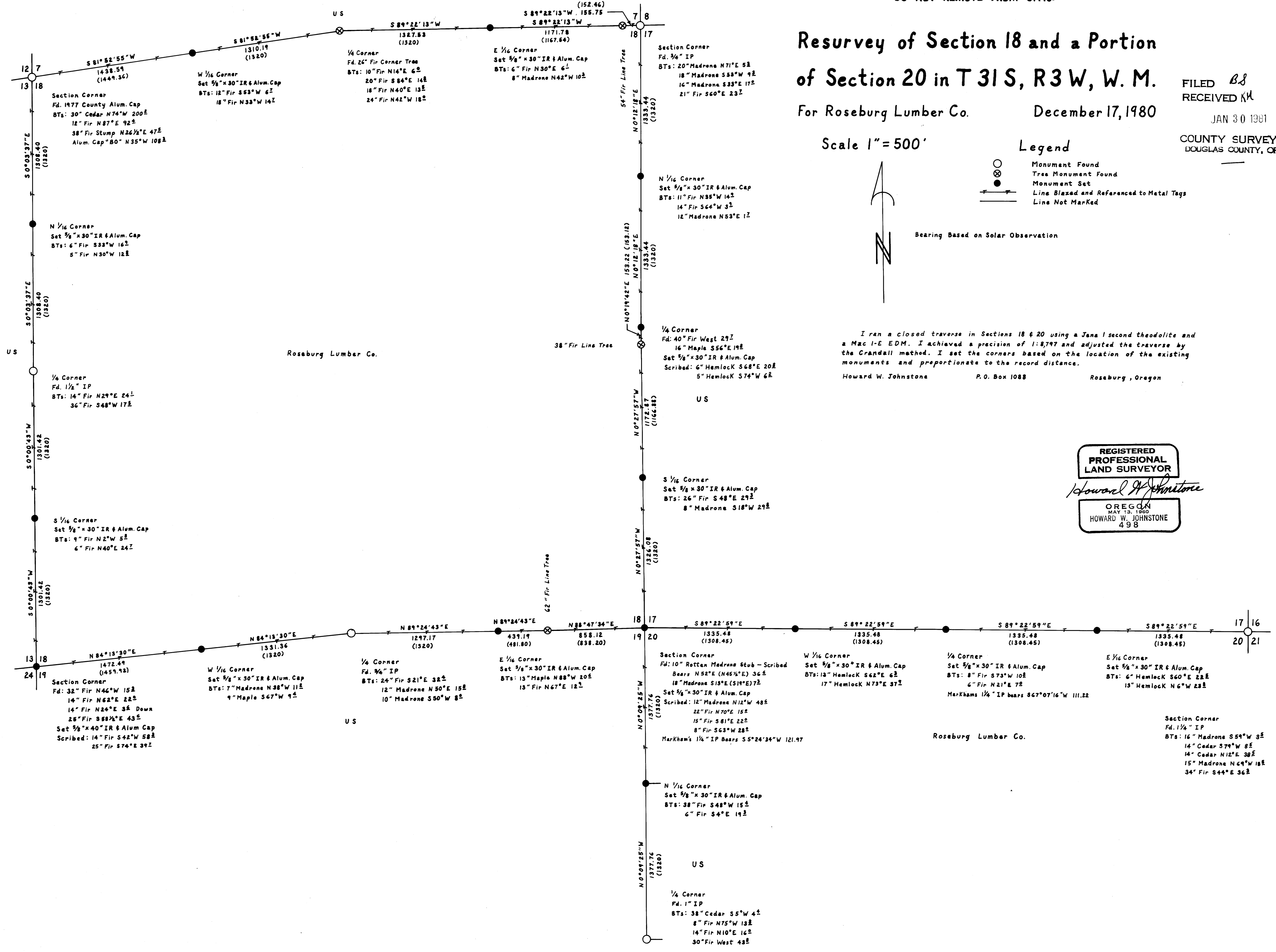
Bearing Based on Solar Observation

I ran a closed traverse in Sections 18 & 20 using a Jena 1 second theodolite and a Mac I-E EDM. I achieved a precision of 1:8,797 and adjusted the traverse by the Crandall method. I set the corners based on the location of the existing monuments and proportionate to the record distance.
Howard W. Johnstone P.O. Box 1088 Roseburg, Oregon

REGISTERED
PROFESSIONAL
LAND SURVEYOR

Howard W. Johnstone

OREGON
MAY 13, 1960
HOWARD W. JOHNSTONE
498



MAP FILE 1986-42