

COUNTY SURVEYORS FILE DATA
DO NOT REMOVE FROM OFFICE

SURVEY IN THE NORTH 1/2 SECTION 7, TWP. 27 S., RNG. 6 W., W.M.
Surveyed for Herman Stoffel by Landline Development Co.
January, 1981 Scale 1" = 100'

- Found 5/8" Iron Rod
- Set 5/8" Iron Rod

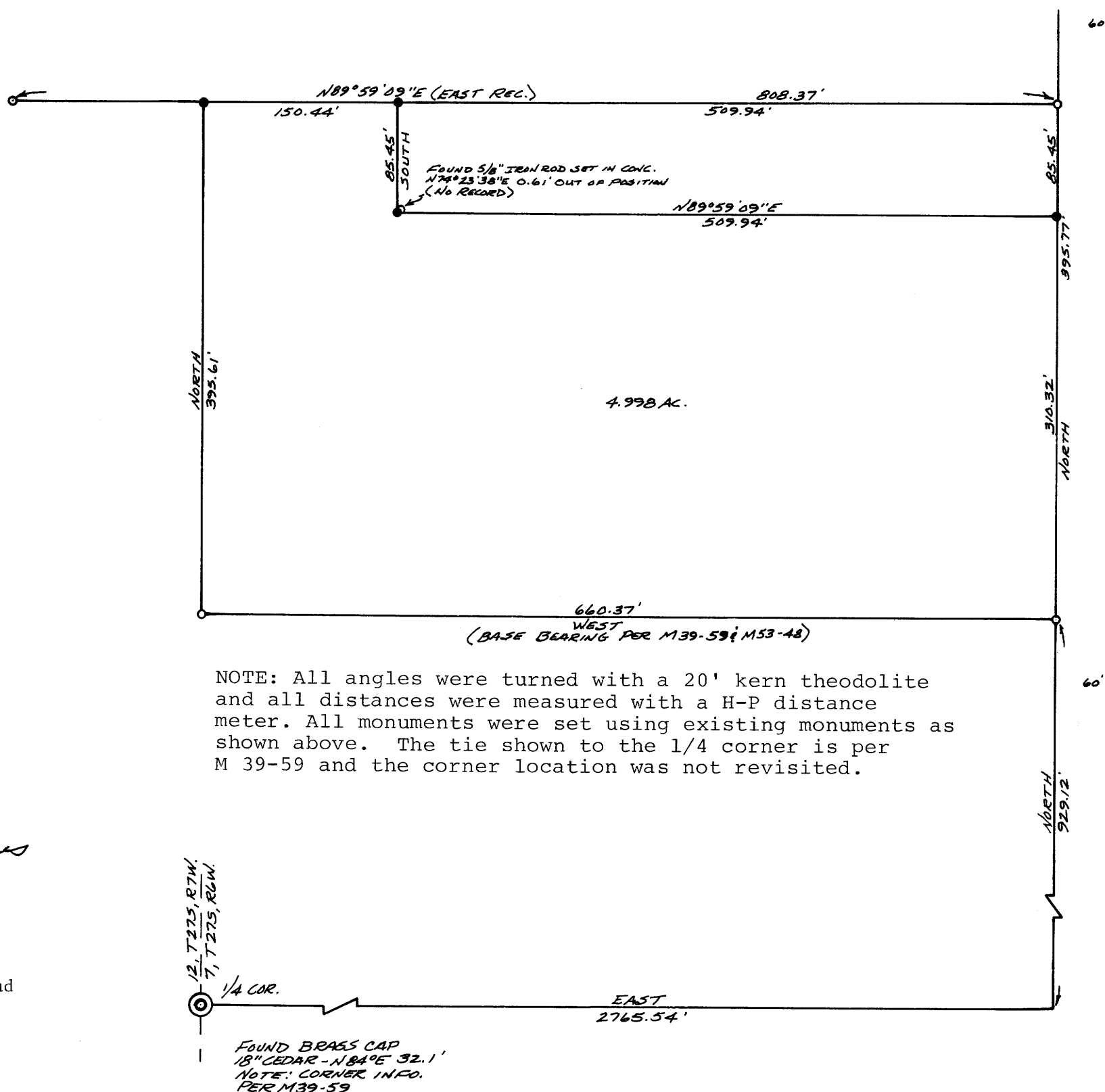
FILED *BS*
RECEIVED *FE*

JAN 29 1981

COUNTY SURVEYOR
DOUGLAS COUNTY, ORE.

BS

MAP FILE 1186-40



NOTE: All angles were turned with a 20' kern theodolite and all distances were measured with a H-P distance meter. All monuments were set using existing monuments as shown above. The tie shown to the 1/4 corner is per M 39-59 and the corner location was not revisited.

REGISTERED
OREGON
LAND SURVEYOR

Bruce R. Rogers

JULY 10, 1964
BRUCE R. ROGERS
660

2737 N.W. Calkins Road
Roseburg, Oregon

MAP FILE 1186-40