

FILED *BS*
RECEIVED *JK*

JAN 22 1981

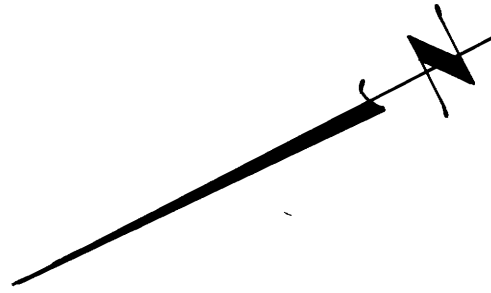
COUNTY SURVEYOR
DOUGLAS COUNTY, ORE.

BS

MAP FILE *M86-38*

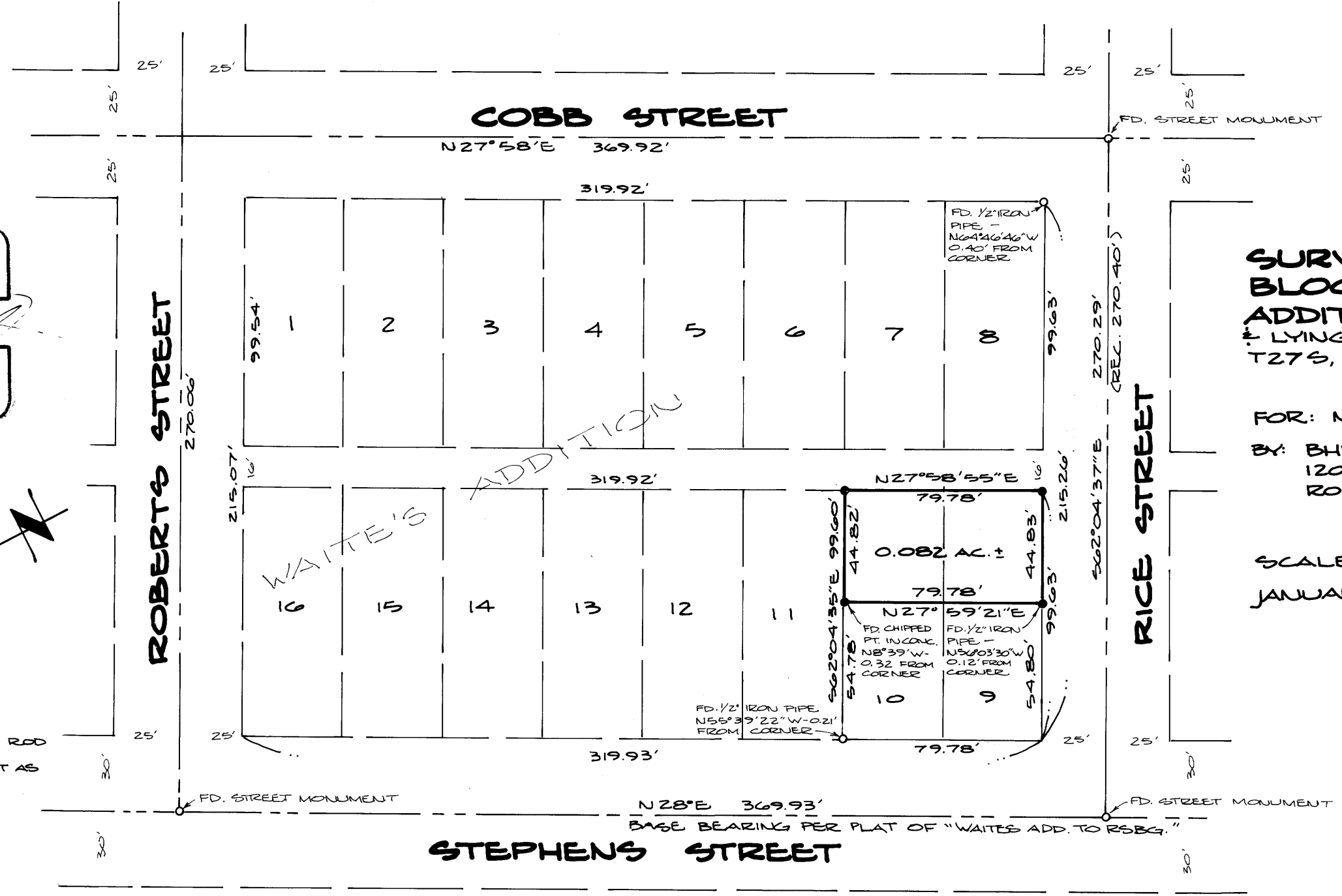
REGISTERED
PROFESSIONAL
LAND SURVEYOR

[Signature]
OREGON
JULY 12, 1958
DONALD A. BENTZ
839



LEGEND:

- - SET 5/8" x 30" IRON ROD
- - FOUND MONUMENT AS NOTED



**SURVEY IN LOTS 9 & 10,
BLOCK 17, "WAITE'S
ADDITION TO ROSEBURG"**
LYING IN SE 1/4, SECTION 24,
T27S, R6W, W.M.

FOR: MEL'S APPLIANCE
BY: BHW ENGINEERING, INC.
1205 S.E. COURT
ROSEBURG, OREGON

SCALE: 1" = 50'
JANUARY 1981

NARRATIVE:
SURVEY TO ESTABLISH PROPERTY
CORNERS PRIOR TO CONSTRUCTION
OF NEW BUILDING. STREET
MONUMENTS USED WITH EXCEPTION
OF COBB AND ROBERTS WHICH WERE
COMPUTED USING DISTANCE-DISTANCE
INTERSECTION (SEE C.S. FILE 39/190).
WILD T-1 AND RED-1 E.D.M. USED BY
GREG LANG AND MIKE RADCLIFFE.
COMPUTATIONS BY DON BENTZ. DRAFTING
BY DEBRA HOPKINS.

COUNTY SURVEYORS FILE DATA
DO NOT REMOVE FROM OFFICE

MAP FILE *M86-38*