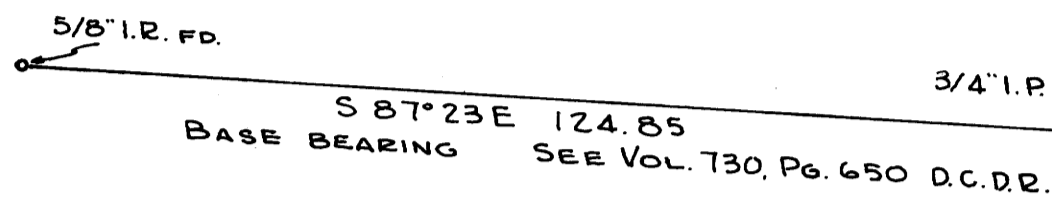


COUNTY SURVEYORS FILE DATA
DO NOT REMOVE FROM OFFICE

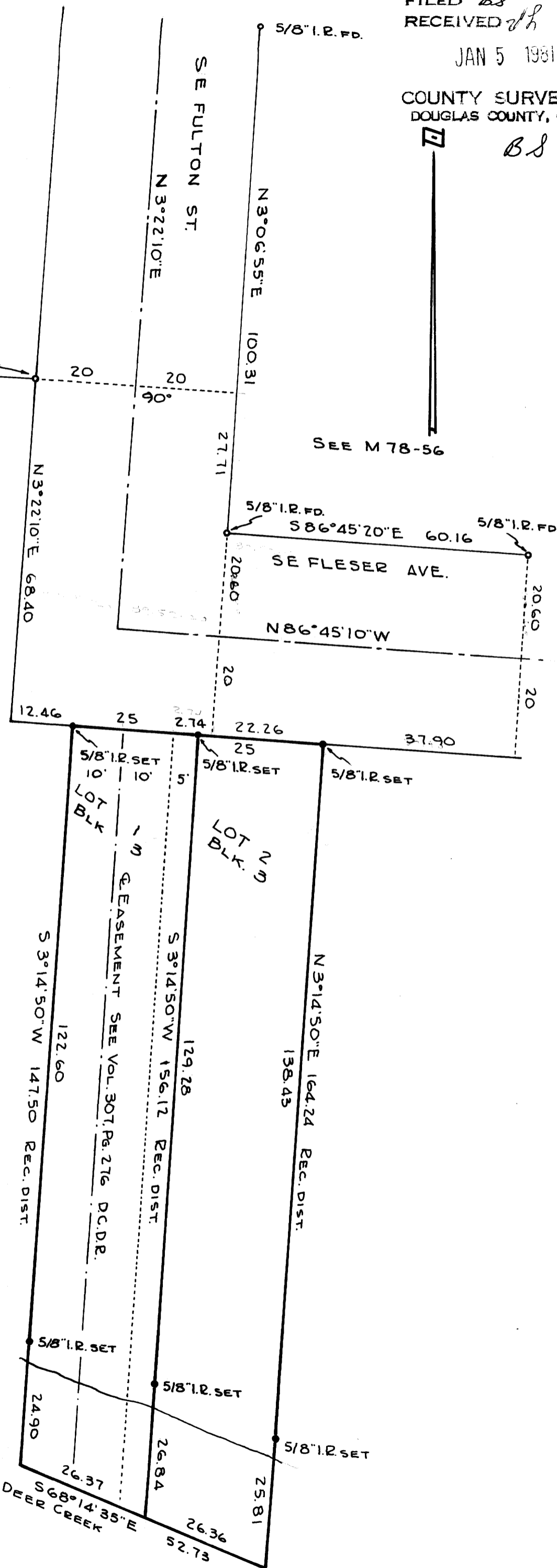
**SURVEY OF LOTS 1 & 2, BLOCK 3
BOGARD ADDITION TO CITY OF ROSEBURG
NW 1/4 NE 1/4 SEC. 19, T.27 S., R. 5 W., W.M.
SURVEYED FOR KIT BURUM
SURVEYED BY R. H. GEE
914 CLEVELAND RAPIDS RD., ROSEBURG, ORE.
DECEMBER, 1980 SCALE 1" = 20"**

FILED *BS*
RECEIVED *dh*
JAN 5 1981
COUNTY SURVEYOR
DOUGLAS COUNTY, ORE.



No monuments were found on the South boundary of Fleser Avenue.

The centerlines of Fulton Street and Fleser Avenue were established by measuring from back of curb to back of curb. The North boundary of Block 3, Bogard Addition, was determined as being 20 feet South and parallel to the centerline of Fleser Avenue. The West line of Lot 1, Block 3, Bogard Addition, was set 12.46 feet easterly from the projected intersection of the West line of Fulton Street and the South line of Fleser Avenue as per plat of Bogard Addition. Lot lines of Lots 1 and 2, Block 3, Bogard Addition were made to be perpendicular to the centerline of Fleser Avenue. Plat distances of record were used to the center of Deer Creek.



REGISTERED
PROFESSIONAL
LAND SURVEYOR

R. H. Gee
OREGON
SEPTEMBER 23, 1977
R. H. GEE
1191