

OCT 23 1980

COUNTY SURVEYOR
DOUGLAS COUNTY, ORE

Resurvey and Subdivision of E 1/2 of Section 3, T30S, R7W, W. M.

For Roseburg Lumber Company

September 19, 1980

Scale 1" = 400'

I ran a closed traverse in Section 3 using a Jena 1 second theodolite and a Mac I-E EDM. I achieved a precision of 1:23,828 on the control traverse and 1:17,785 in the interior. I adjusted the traverses by the Crandall method and set the corners by standard subdivision procedure based on the location of the existing monuments.

William H. Byars surveyed Section 2 in 1872 and Section 3 in 1882. The proportion of the line between these sections is based on the official plat of the 1882 survey.

Howard W. Johnstone P.O. Box 1088 Roseburg, Oregon



Legend

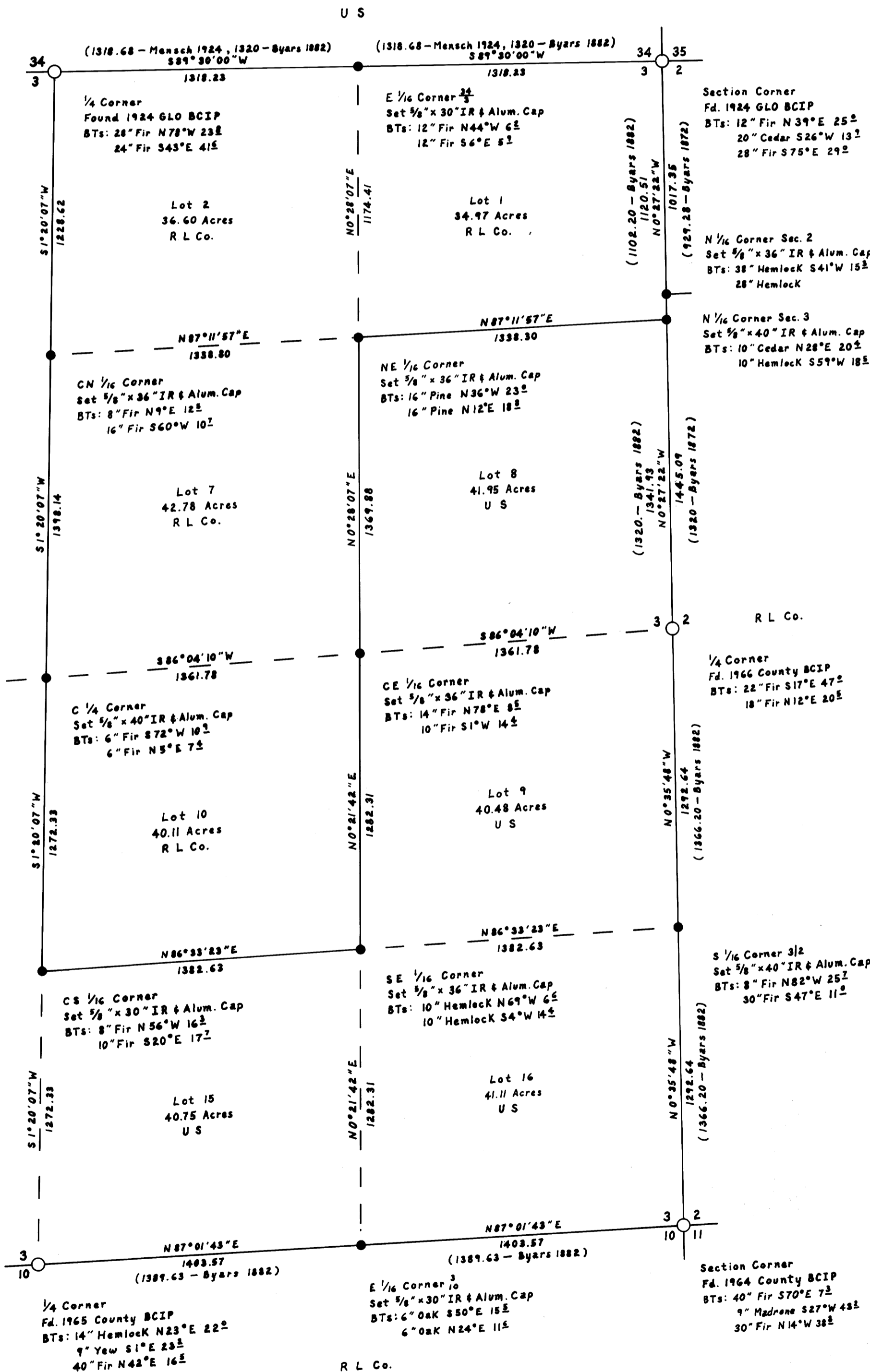
- Monument Found
- Monument Set
- Subdivision Line
- - - Section or Property Line
- Referenced to Aluminum Tags

Bearings based on E 1/2 of North line of Section 3. Bearing from Mensch's 1924 resurvey.

REGISTERED
PROFESSIONAL
LAND SURVEYOR

Howard W. Johnstone

OREGON
MAY 19, 1960
HOWARD W. JOHNSTONE
498



1/4 Corner
Fd. 1975 Cadastral BCIP
BTs: 14" Oak N60°W 23"
12" Oak N45°E 10" Dead
10" Fir S67 1/2°W 54"
6" Fir S48°E 64"