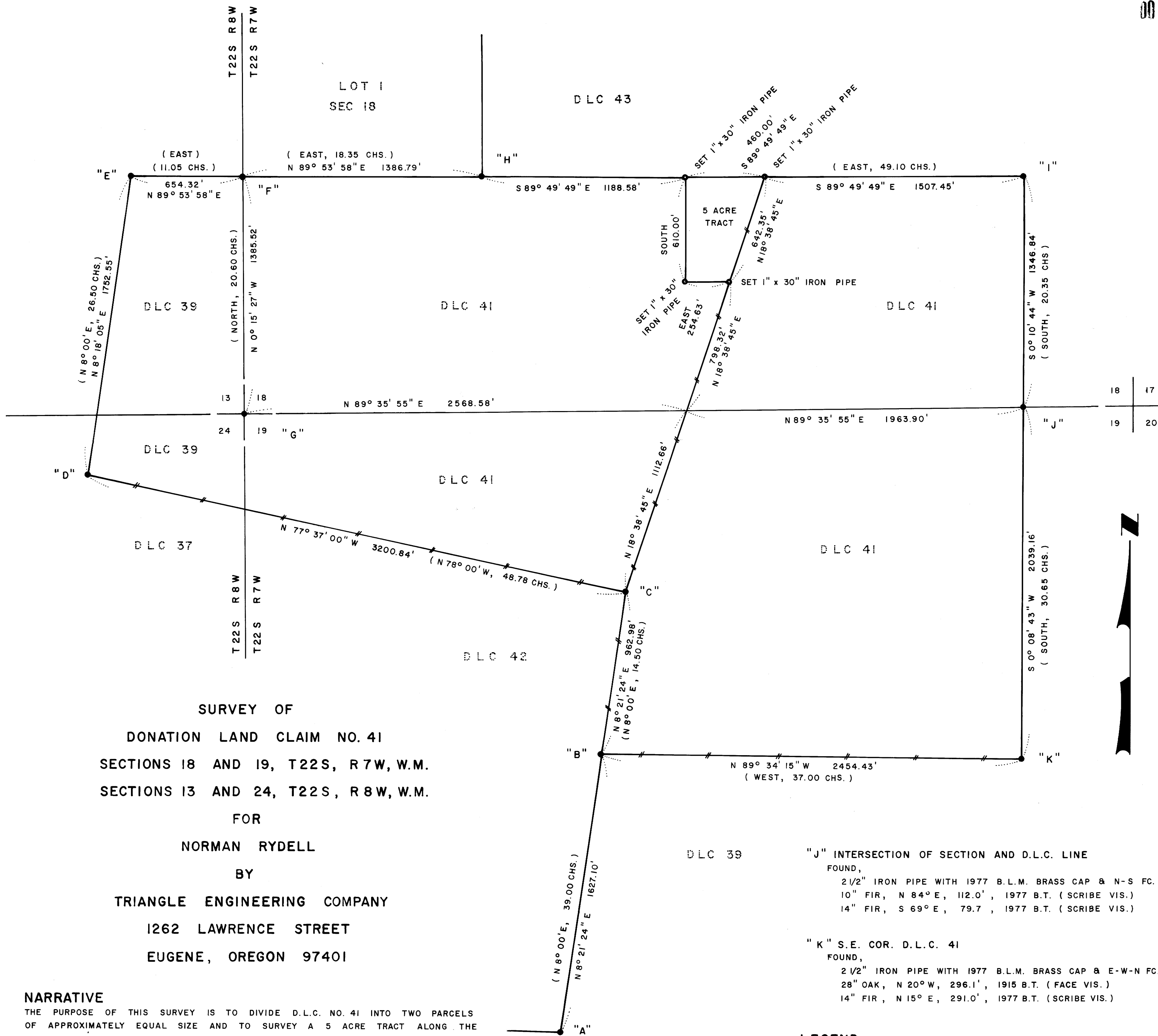


MSB-29



SURVEY OF
DONATION LAND CLAIM NO. 41
SECTIONS 18 AND 19, T22S, R7W, W.M.
SECTIONS 13 AND 24, T22S, R8W, W.M.
FOR
NORMAN RYDELL
BY
TRIANGLE ENGINEERING COMPANY
1262 LAWRENCE STREET
EUGENE, OREGON 97401

NARRATIVE

THE PURPOSE OF THIS SURVEY IS TO DIVIDE D.L.C. NO. 41 INTO TWO PARCELS OF APPROXIMATELY EQUAL SIZE AND TO SURVEY A 5 ACRE TRACT ALONG THE NORTH LINE OF SAID D.L.C. ALL OF THE EXTERIOR CORNERS OF D.L.C. NO. 41 WERE FOUND AS SHOWN EXCEPT CORNERS "B" AND "C". A CLOSED MEANDER TRANSIT TRAVERSE WAS RUN BETWEEN ALL FOUND CORNERS AND USED FOR CONTROL. CORNER "C" (N.E. CORNER D.L.C. NO. 42) WAS RE-ESTABLISHED BY THE "BROKEN BOUNDARY METHOD" USING CORNERS "A" AND "D" AS CONTROL. CORNER "B" (S.W. CORNER D.L.C. NO. 41) WAS RE-ESTABLISHED AT PROPORTIONATE DISTANCE BETWEEN CORNERS "A" AND "C". OFFSETS TO THE TRUE LINE WERE COMPUTED FROM THE MEANDER TRAVERSE. THE TRUE PROPERTY LINE WAS MARKED WITH METAL FENCE POSTS AS SHOWN. DISTANCES TO BEARING TREES ARE CENTER MEASURE. ALL BEARING TREES ARE SCRIBED.

- "A" S.E. COR. D.L.C. 42
FOUND,
18" x 18" x 24" STONE WITH "X" ON TOP AND
C.L. 42 MARKED ON N.E. FACE.
"X" ON ROCK, S 29° W, 22.3'
"X B.O." ON ROCK, S 18° E, 13.4', 1976 B.O.
"Δ B.O." ON ROCK, S 81° W, 17.2', 1976 B.O.
- "B" S.W. COR. D.L.C. 41
FOUND,
NO EVIDENCE FOUND OF ORIGINAL CORNER. NEW CORNER
SET AT PROPORTIONATE DISTANCE BETWEEN "A" AND "C"
SET,
1 1/2" x 33" IRON PIPE WITH BRASS CAP
30" WHITE OAK, N 81° E, 40.8'
- "C" N.E. COR. D.L.C. 42
FOUND,
NO EVIDENCE FOUND OF ORIGINAL CORNER. NEW CORNER
SET BY "BROKEN BOUNDARY METHOD" BETWEEN "A" AND "D"
SET,
1 1/2" x 33" IRON PIPE WITH BRASS CAP.
18" BLACK OAK, N 43° W, 74.0'
28" WHITE OAK, S 12° W, 106.2'
- "D" S.W. COR. D.L.C. 39
FOUND,
6" x 8" x 12" STONE OF UNKNOWN ORIGIN WITH "X" ON TOP.
STONE FOUND 20' WEST OF 4' CREEK. BEARING AND
DISTANCE TO N.W. CORNER D.L.C. 39 FITS ORIGINAL NOTES.
SET,
14" WHITE FIR, N 23° E, 76.4'
24" ASH, EAST, 18.0'
- "E" N.W. COR. D.L.C. 39
FOUND,
1 1/2" IRON PIPE WITH 1980 BRASS CAP. ALSO N-S-E FENCE.
26" DOWNED OAK, S 65° E, 133.3', 1858 B.T. (FACE VIS.)
38" HOLLOW OAK, S 25° E, 99.0', 1858 B.T. (FACE VIS.)
12" FIR, N 79° E, 82.4', 1980 B.T.
- "F" S.W. COR. LOT I, SEC. 18
FOUND,
1 1/2" IRON PIPE WITH 1980 BRASS CAP.
12" ALDER, N 25° E, 29.2', 1980 B.T.
17" ALDER, N 60° W, 16.0', 1980 B.T.
- "G" SECTION CORNER 13, 18, 19 AND 24
FOUND,
2 1/2" IRON PIPE WITH 1977 B.L.M. BRASS CAP.
6" FIR, S 44° W, 38.0', 1977 B.T. (SCRIBE VIS.)
6" FIR, N 64 1/2° E, 54.5', 1977 B.T. (SCRIBE VIS.)
6" FIR, S 21 3/4° E, 29.7', 1977 B.T. (SCRIBE VIS.)
15" FIR, N 12 1/2° W, 51.1', 1977 B.T. (SCRIBE VIS.)
- "H" S.W. COR. D.L.C. 43
FOUND,
2 1/2" IRON PIPE WITH 1968 B.L.M. BRASS CAP.
16" FIR, N 34° E, 38.6', 1968 B.T. (FACE VIS.)
28" FIR, S 17° E, 27.8', 1968 B.T. (FACE VIS.)
- "I" N.E. COR. D.L.C. 41
FOUND,
2 1/2" IRON PIPE WITH 1977 B.L.M. BRASS CAP
9" FIR, S 38° E, 4.3', 1967 B.T. (FACE VIS.)
14" FIR, S 36° W, 29.9', 1967 B.T. (FACE VIS.)

LEGEND

- CORNERS FOUND AND USED FOR CONTROL
- CORNERS SET
- +— LINES MARKED WITH METAL FENCE POSTS
- () BASIS OF BEARING, SOLAR OBSERVATION
- () DATA OF RECORD
- SCALE 1" = 400' DATE, DECEMBER 1980

Lee Roberts

MSB-29