

MAJOR LAND PARTITION IN SW 1/4 OF SECTION 6, T27S, R5W, W.M.

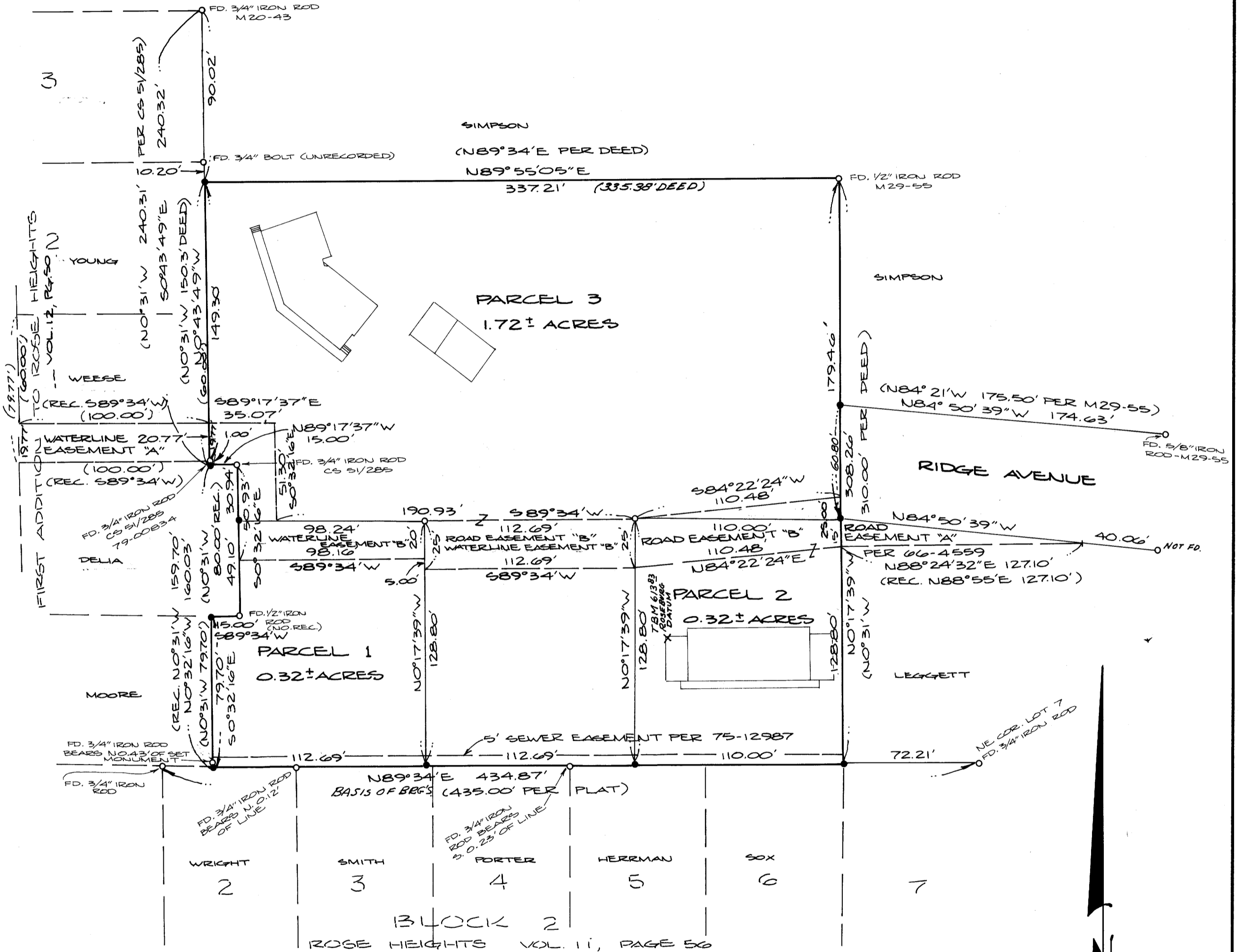
COUNTY SURVEYORS FILE DATA
DO NOT REMOVE FROM OFFICE

FILED ϕ
RECEIVED

OCT 23 1980

COUNTY SURVEYOR
DOUGLAS COUNTY, ORE.

SCALE: 1" = 50' OCTOBER 1980



• DENOTES 3/8" X 24" IRON ROD SET

REGISTERED
PROFESSIONAL
LAND SURVEYOR

Eugene A. Bloom
OREGON
MAY 13, 1960
EUGENE A. BLOOM
492

SHEET 2 OF 2

173-80

WAYNE D. LEMLEY

MAP FILE M86-1-B

36-6-89 137B