

COUNTY SURVEYORS FILE DATA
DO NOT REMOVE FROM OFFICE

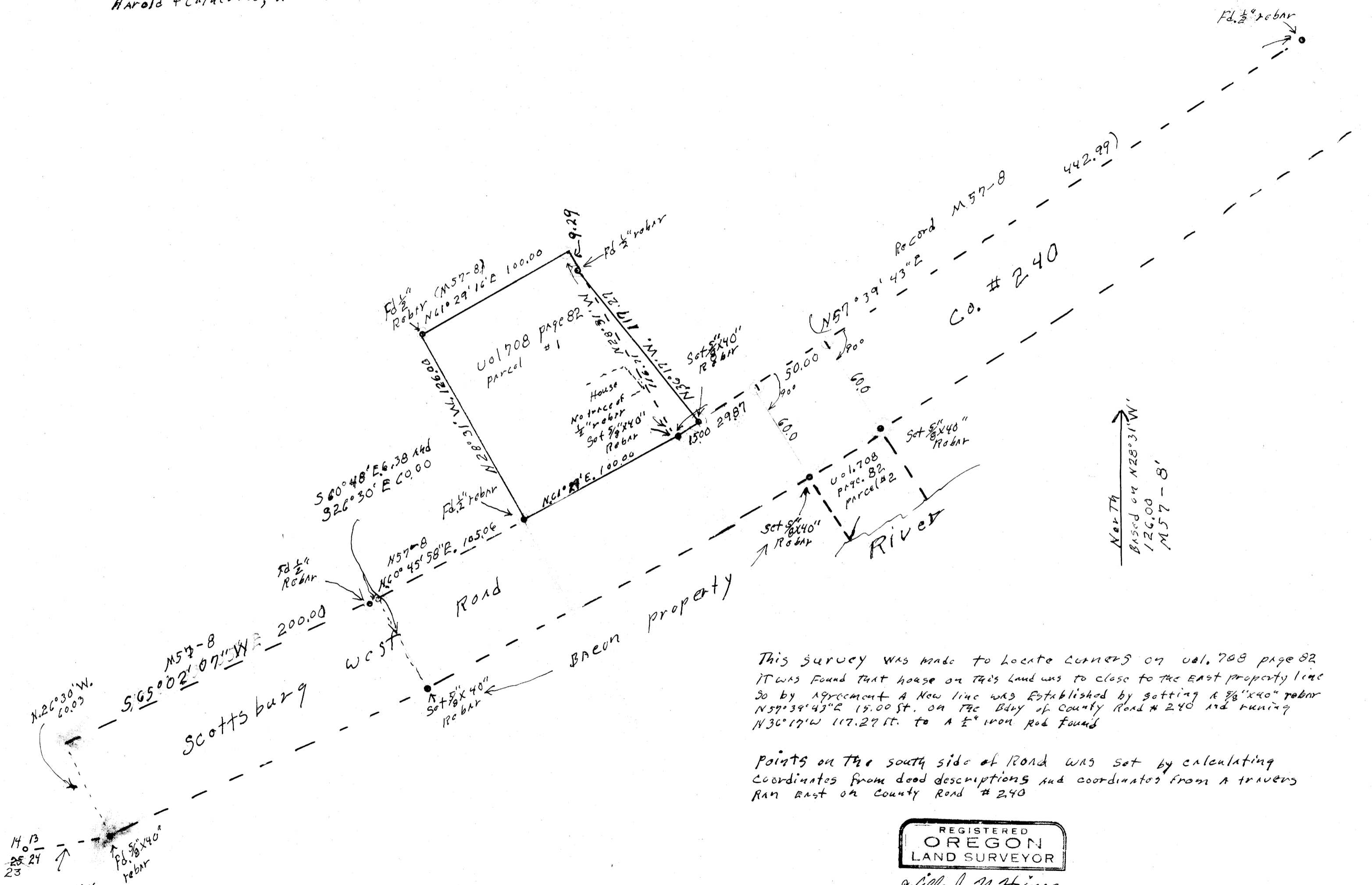
1"=50'

T22S. R10W SECT. 13
Scale 1"=50'
Nov 3 1980

FILED BS
RECEIVED
DEC 15 1980
COUNTY SURVEYOR
DOUGLAS COUNTY, ORE.
BS

For
MARVIN D. COFFERT Box 602 Scottsburg Ore. 97473
RALPH + LORAIN, Bacon Rt. 4 Box 43 Scottsburg
Harold + Catherine, Horton

MAP FILE M286-18



This survey was made to locate corners on vol. 708 page 82
IT WAS FOUND THAT HOUSE ON THIS LAND WAS TOO CLOSE TO THE EAST PROPERTY LINE
SO BY AGREEMENT A NEW LINE WAS ESTABLISHED BY SETTING A 5/8\" x 40\" REBAR
N57°39'43\" E 15.00 ST. ON THE Bdry OF COUNTY ROAD # 240 AND RUNNING
N30°17'W 117.29 FT. TO A 1/2\" IRON ROB FOUND

POINTS ON THE SOUTH SIDE OF ROAD WAS SET BY CALCULATING
COORDINATES FROM DEED DESCRIPTIONS AND COORDINATES FROM A TRAVERSE
RAN EAST ON COUNTY ROAD # 240

North
Based on N28°31'W
126.00
M57-8'

MAP FILE M286-18

14.13
25.24
23
S82°13'35\" W
1729.05
CS. File 55/70
Record

REGISTERED
OREGON
LAND SURVEYOR
Wilford N. Haines
MAY 7, 1948
WILFORD N. HAINES
239

PT. 38 Box 2
Drain, Ore. 97435