

PROPERTY SURVEY FOR DONALD KIMBERLING

IN THE S.W. 1/4 SECTION 28, T23S, R5W, W.M.
DOUGLAS COUNTY, OREGON
NOVEMBER, 1980

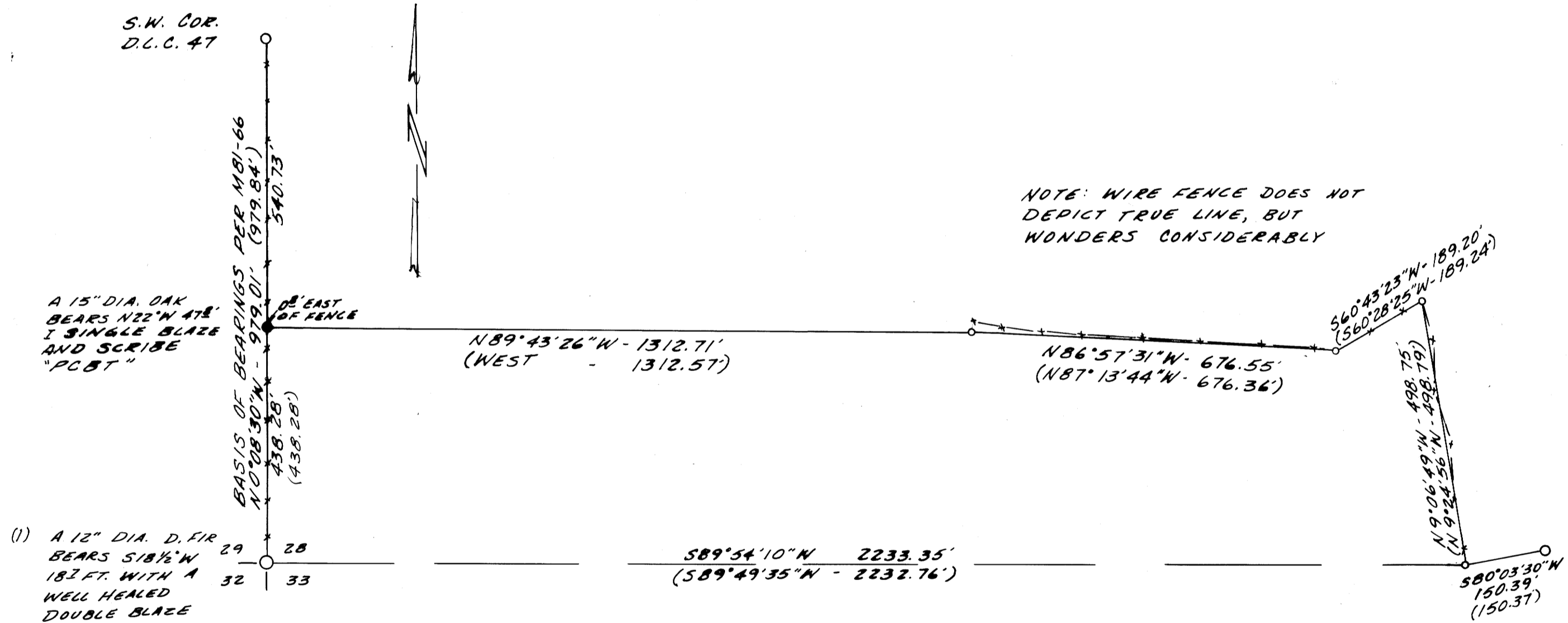
COUNTY SURVEYORS FILE DATA
DO NOT REMOVE FROM OFFICE

FILED *BS*
RECEIVED *BS*
DEC 1 1980
COUNTY SURVEYOR
DOUGLAS COUNTY, ORE.
BS

SCALE: 1" = 200'

NARRATIVE

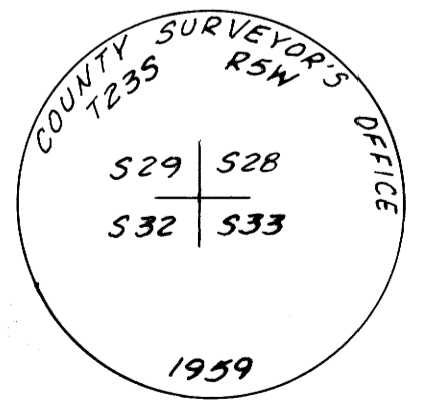
The purpose of this survey was to set the S.W. Corner of the Donald L. Kimberling property and mark part of the south line for construction of a fence. The corner was set the deeded distance from the section corner common to Sections 28, 29, 32 and 33, T23S, R5W, W.M., on line between said section corner and the found S.W. Corner of D.L.C. 47.



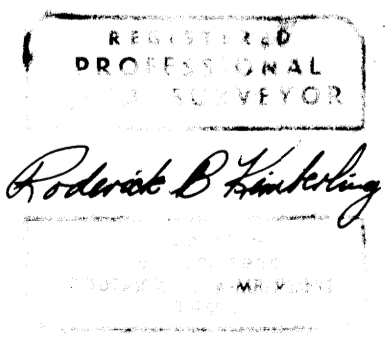
NOTE: WIRE FENCE DOES NOT DEPICT TRUE LINE, BUT WONDERS CONSIDERABLY

LEGEND

- Fd. 1/2" Iron Rod
- Fd. 3/8" Iron Rod
- Set 3/8" Iron Rod
- Fd. Brass Cap marked
- () Record Information per M81-66



ALPHA & OMEGA ENGINEERS, INC.
1622 N.E. VINE STREET
ROSEBURG, OREGON 97470
PH. 673-0823



MAP FILE M 86-13

MAP FILE M 86-13