

AGREEMENT LINE SURVEY
 APPROXIMATE SECTION LINE
 BETWEEN SECTIONS 28 & 33
 T. 24S., R. 6 W. W.M.

FOR HOMESTEAD REALTY
 by BRUCE ROGERS
 2737 N.W. CALKINS
 ROSEBURG, OREGON
 SEPT., 1980
 1" = 100'

COUNTY SURVEYORS FILE DATA
 DO NOT REMOVE FROM OFFICE

FILED ✓
 RECEIVED ✓

OCT 13 1980

COUNTY SURVEYOR
 DOUGLAS COUNTY, ORE.

MAP FILE M.85-69

- - Found O.S.H.D. R/W Pins
- - Set 5/8" iron rod in R/W Fe.

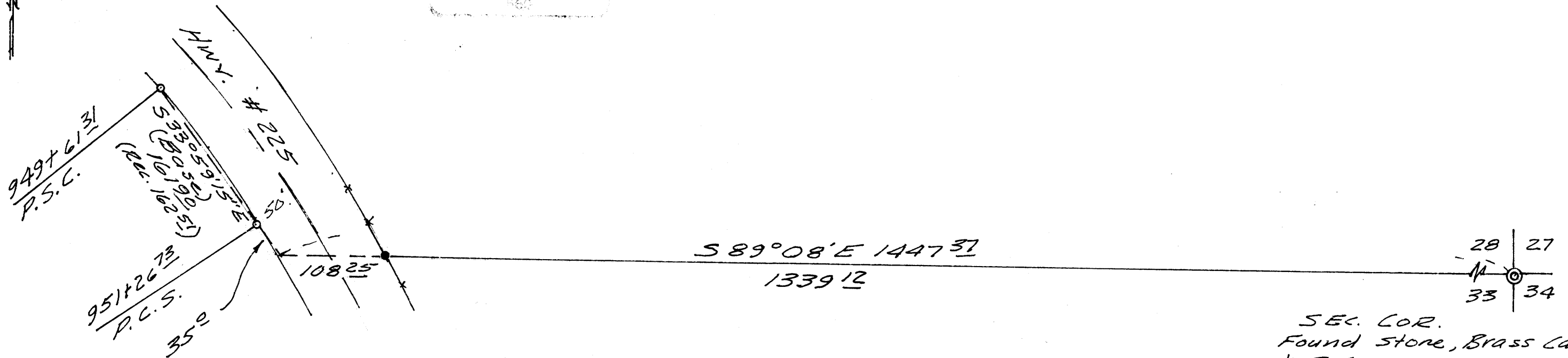
NARRATIVE

The point 35' from the R/W pin shown on the map was scaled from the O.S.H.D. R/W Map. I set this point and ran a random traverse to the section corner. I then calculated the true line and offsets; set the rod and flagged the line. All work done with transit & chain.

REGISTERED
 OREGON
 LAND SURVEYOR

Bruce L. Rogers

JULY 15, 1982
 BRUCE L. ROGERS
 560



SEC. COR.
 Found stone, Brass cap
 & B.T.s as per C.S.
 Renewal #86

MAP FILE M.85-69