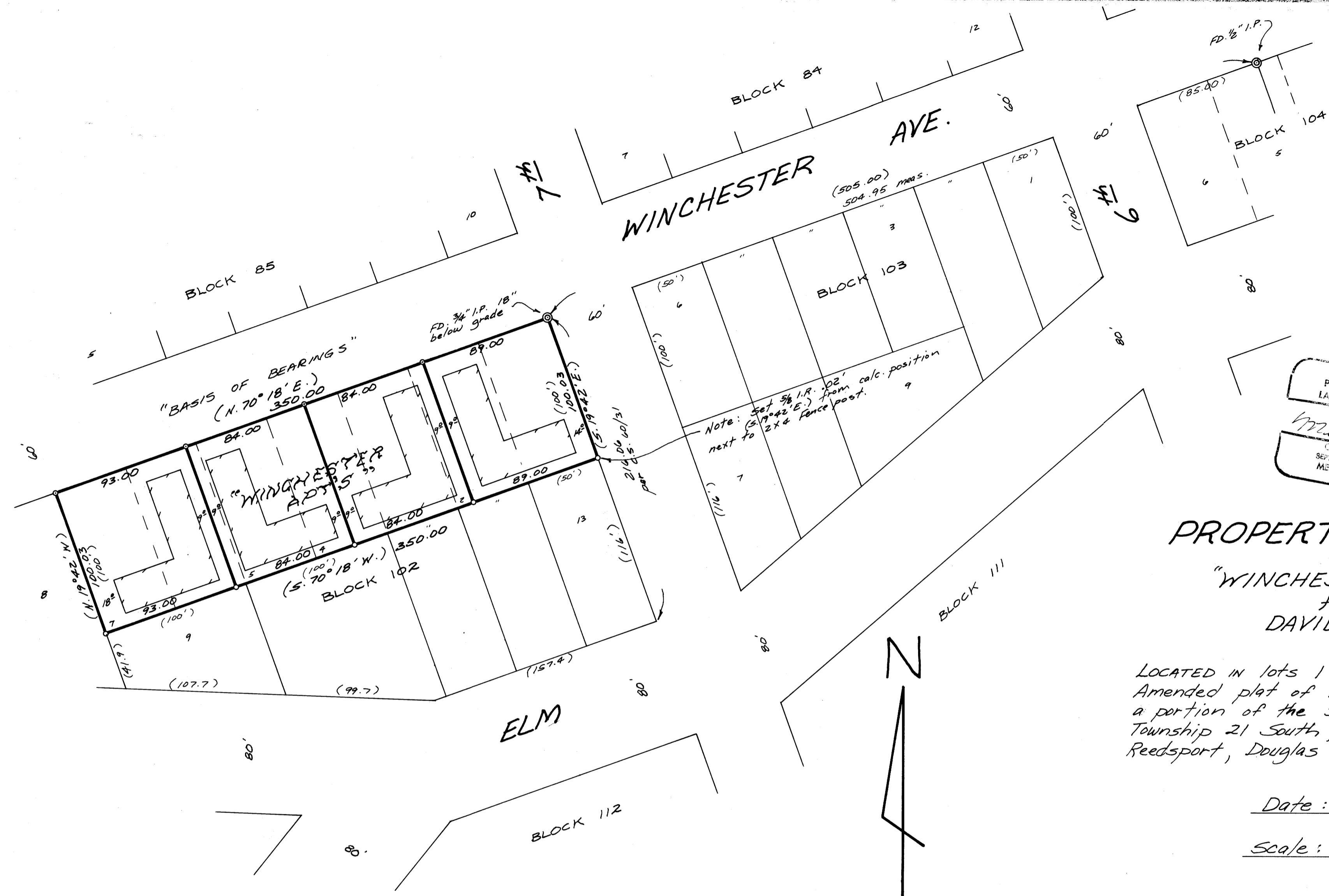


FILED &
RECEIVED &
SEP 26 1980
COUNTY SURVEYOR
DOUGLAS COUNTY, ORE.
&



REGISTERED
PROFESSIONAL
LAND SURVEYOR
Mel Avery
CREGG
SEPT. 30 1977
MEL AVERY
1415

PROPERTY SURVEY
of
"WINCHESTER APT'S"
for
DAVID BRADLEY

LOCATED IN lots 1 through 7 of block 102,
Amended plat of Railroad Addition being
a portion of the SW 1/4 of Sec. 35,
Township 21 South, Range 12 West, W.M.,
Reedsport, Douglas County, Oregon.

Date: Sept. 5, 1980

Scale: 1" = 50'

EQUIP. USED: 20 Second Theodolite and
MAC 14 EDM.

LEGEND

- ⊙ = Monument Found.
- = Monument Set (5/8" I.R. x 30" long)

Note: The west line was established
from plat distances and the
south line was established from
County Survey filed C.S. 60/31.

COUNTY SURVEYORS FILE DATA
DO NOT REMOVE FROM OFFICE

Parametrix, Inc. 2785 Frontage Road, Reedsport, Ore. 97467

No.	Revisions	Date	By	Checked

Approved _____
Scale _____ Date _____
Parametrix, Inc.



Sub No. 14-128-RO