

NOTE

POSITION OF THE ALDER HUB AGREES WITH CALL NOTE DISTANCES TO THE NORTH FORK SMITH RIVER TO THE WEST AND NORTH, BUT THE DISTANCE TO THE EAST IS LONG.

SECTION CORNER 28, 29, 32, 33

FOUND: ALDER HUB (unknown origin)  
2 1/2" ALDER, S 46 E, 35.7' (bark scribed)  
SET: U.S.F.S. 2 1/2" ALUMINUM MONUMENT  
27" FIR, N 42 E, 80.1'  
52" FIR, S 86 E, 58.4'  
17" ALDER, S 39 W, 14.3' (bark scribed)  
21" ALDER, N 49 W, 20.7' (bark scribed)

1/4 CORNER 28 & 33

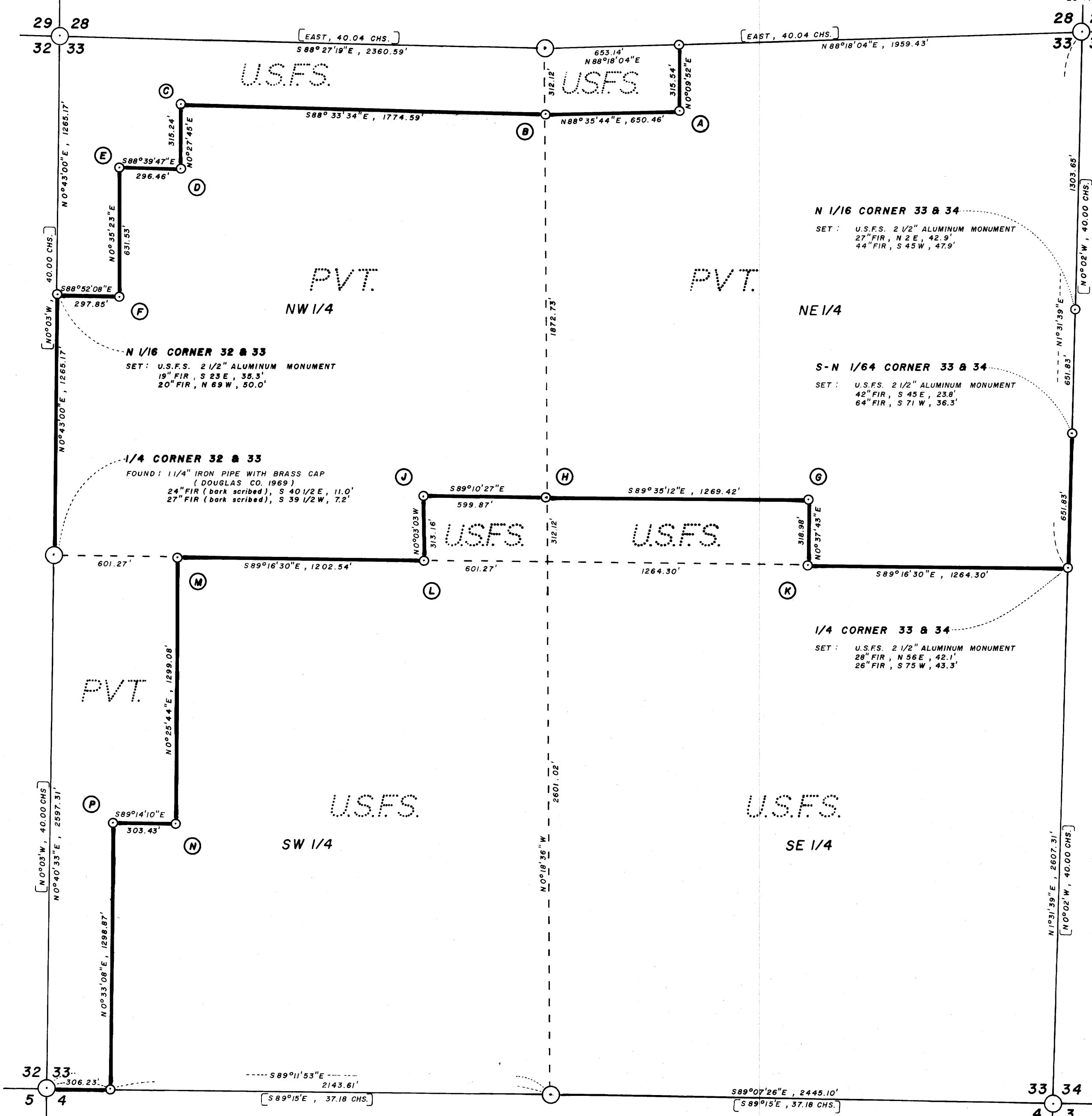
FOUND: 1 1/4" IRON PIPE WITH BRASS CAP (DOUGLAS CO. 1978)  
54" FIR, N 70 E, 6.8' (original)  
28" FIR, N 81 W, 18.0'

W-E 1/64 CORNER 28 & 33

SET: U.S.F.S. 2 1/2" ALUMINUM MONUMENT  
8" FIR, N 31 W, 47.3'  
33" FIR, S 87 W, 62.6'

SECTION CORNER 27, 28, 33, 34

FOUND: 16" FIR STUB (positive of scribing visible)  
DOUGLAS CO. BRASS CAP - N 58° 29' W, 1.33' FROM CORNER  
11" FIR STUB, N 27 E, 12.2' (original, scribe visible)  
18" FIR, N 88 1/2 E, 27.8'  
37" FIR, S 65 E, 47.0'  
38" FIR, S 65 W, 12.4' (original)  
63" FIR, N 69 W, 13.3'  
20" FIR STUB, N 38 W, 10.8' (original)



- (A) C-N-NW-NE 1/256 CORNER  
SET: U.S.F.S. 2 1/2" ALUMINUM MONUMENT  
38" FIR, N 33 E, 37.5'  
37" FIR, N 72 W, 49.9'
- (B) C-N-N-N 1/256 CORNER  
CORNER FALLS IN N FORK SMITH RIVER  
SET: U.S.F.S. 2 1/2" ALUMINUM MONUMENT AS WITNESS CORNER  
W.C. BEARS N 88° 35' 44" E, 35.00' FROM CORNER POINT  
37" DOUBLE MAPLE, N 83 E, 45.8' (from W.C.)  
24" MAPLE, S 25 E, 45.7' (from W.C.)
- (C) C-N-NW-NW 1/256 CORNER  
SET: U.S.F.S. 2 1/2" ALUMINUM MONUMENT  
48" FIR, N 73 E, 37.2'  
52" FIR, N 9 E, 61.2'
- (D) NW-NW 1/64 CORNER  
SET: U.S.F.S. 2 1/2" ALUMINUM MONUMENT  
38" FIR, N 3 E, 11.9'  
18" SPRUCE, S 14 E, 61.7'
- (E) C-W-NW-NW 1/256 CORNER  
SET: U.S.F.S. 2 1/2" ALUMINUM MONUMENT  
55" FIR, NORTH, 52.3'  
48" FIR, S 42 W, 30.8'
- (F) C-W-W-NW 1/256 CORNER  
CORNER FALLS IN N FORK SMITH RIVER  
SET: U.S.F.S. 2 1/2" ALUMINUM MONUMENT AS WITNESS CORNER  
W.C. BEARS N 88° 52' 08" W, 59.00' FROM CORNER POINT  
5" ALDER (bark scribed), N 52 W, 39.5' (from W.C.)  
10" ALDER (bark scribed), S 59 W, 9.3' (from W.C.)
- (G) C-S-S-NE 1/256 CORNER  
SET: U.S.F.S. 2 1/2" ALUMINUM MONUMENT  
24" HEMLOCK, N 29 W, 21.2'  
27" FIR, S 35 W, 16.4'
- (H) C-S-S-S 1/256 CORNER  
SET: U.S.F.S. 2 1/2" ALUMINUM MONUMENT  
48" FIR, N 54 W, 28.4'  
10" FIR, S 8 W, 1.6'
- (J) C-S-SE-NW 1/256 CORNER  
SET: U.S.F.S. 2 1/2" ALUMINUM MONUMENT  
18" ALDER (bark scribed), N 16 E, 27.7'  
21" ALDER (bark scribed), S 19 E, 17.4'
- (K) C-E 1/16 CORNER  
SET: U.S.F.S. 2 1/2" ALUMINUM MONUMENT  
17" FIR, N 4 E, 32.0'  
16" FIR, S 75 E, 25.3'
- (L) C-E-W 1/64 CORNER  
SET: U.S.F.S. 2 1/2" ALUMINUM MONUMENT  
24" FIR, N 24 W, 18.2'  
28" FIR, S 65 E, 23.0'
- (M) C-W-W 1/64 CORNER  
SET: CEMENTED 2 1/2" BRASS TABLET IN LARGE ROCK  
12" ALDER (bark scribed), N 24 E, 3.7'  
9" ALDER (bark scribed), S 16 W, 23.0'
- (N) C-W-SW 1/64 CORNER  
SET: U.S.F.S. 2 1/2" ALUMINUM MONUMENT  
38" FIR, N 19 E, 12.4'  
26" FIR, S 2 E, 17.9'
- (P) C-W-W-SW 1/256 CORNER  
SET: U.S.F.S. 2 1/2" ALUMINUM MONUMENT  
25" ALDER (bark scribed), S 4 E, 46.8'  
17" ALDER (bark scribed), S 38 W, 38.1'

**SURVEY HISTORY SECTION 33**  
THE SOUTH LINE OF SECTION 33 WAS ORIGINALLY SURVEYED BY NATHANIEL MARTIN IN 1892. THE NORTH, EAST AND WEST LINES WERE ORIGINALLY SURVEYED BY HENRY CHANDLER IN 1895. IN 1899, CHANDLER RESURVEYED THE NORTH, EAST AND WEST LINES. IN 1922, FRED MENSCH RETRACED THE SOUTH LINE, REMONUMENTING THE SOUTHWEST CORNER. IN 1952, TOM TILLMAN RESURVEYED THE SOUTH LINE, REMONUMENTING THE SOUTHWEST CORNER AND REESTABLISHING THE SOUTH 1/4 CORNER AND THE SOUTHEAST SECTION CORNER. IN 1968, DOUGLAS CO. SET AN IRON PIPE-BRASS CAP NEAR THE NORTHEAST CORNER. DOUGLAS CO. REMONUMENTED THE WEST 1/4 CORNER IN 1969 AND THE NORTH 1/4 CORNER IN 1978 WITH IRON PIPE-BRASS CAPS.

**NARRATIVE**  
THIS SURVEY WAS MADE DURING THE MONTHS OF MAY THROUGH AUGUST, 1980 BY DONALD L. PEEL OF TRIANGLE ENGINEERING CO., 1262 LAWRENCE, EUGENE, OREGON. CLOSED TRANSIT TRAVERSES WITH A MINIMUM ERROR OF CLOSURE OF 1/4000' WERE RUN FOR CONTROL. BEARINGS WERE BASED ON A SOLAR OBSERVATION ALL OF THE CONTROLLING CORNERS EXCEPT THE EAST 1/4 CORNER WERE FOUND AND TIED. THE EAST 1/4 CORNER WAS SET BY SINGLE PROPORTION. THE REMAINING CORNERS SET THIS SURVEY, WERE SET AT PROPORTIONATE DISTANCE IN ACCORDANCE TO THE MANUAL OF INSTRUCTIONS FOR THE SURVEY OF PUBLIC LANDS OF THE UNITED STATES. OFFSETS TO THE TRUE PROPERTY LINE WERE CALCULATED AND USED TO DETERMINE THE POSITION OF THE TRUE LINE. THE TRUE PROPERTY LINE WAS MARKED IN THE FIELD WITH ORANGE FIBERGLASS FENCE POSTS.

**BASIS OF BEARING :** SOLAR OBSERVATION  
**SCALE :** 1" = 400'  
0m 121.92m 243.84m

**METRIC CONVERSION — 3.2808 FT. = 1.000 METER**  
ALL BEARING TREES SCRIBED FOR THIS SURVEY, DISTANCES WERE CENTER MEASURE AND BEARINGS WERE MAGNETIC, VAR. 20°

- (●) CORNERS FOUND AND USED FOR CONTROL
- (○) CORNERS SET THIS SURVEY
- [ ] G.L.O. BEARING AND DISTANCE
- PROPERTY LINE POSTED WITH ORANGE FIBERGLASS FENCE POSTS.

FIELD NOTES ARE IN BOOKS 4, 6 & 7, GREYBACK PAXTON CADASTRAL SURVEY, CONTRACT NUMBER 53-04HI-0-7780N

I, DONALD L. PEEL, A REGISTERED PROFESSIONAL LAND SURVEYOR IN THE STATE OF OREGON, HEREBY CERTIFY THAT THIS PLAT AND THE NOTES HEREON, ARE A CORRECT REPRESENTATION OF A SURVEY I PERFORMED DURING THE MONTHS OF MAY THROUGH AUGUST, 1980, FOR THE U.S. FOREST SERVICE, IN ACCORDANCE WITH THE STATUTES OF THE STATE OF OREGON AND WITH THE ARTICLES OF MY CONTRACT.

REGISTERED PROFESSIONAL LAND SURVEYOR  
Donald L. Peel  
OREGON  
JULY 9 1980  
DONALD L. PEEL  
752

# SURVEY OF SECTION 33, T 19S, R 10W, W.M. DOUGLAS COUNTY, OREGON

FOR U.S. FOREST SERVICE BY TRIANGLE ENGINEERING CO. SEPT., 1980

**SECTION CORNER 32, 33, 4, 5**  
FOUND: G.L.O. BRASS CAP ON 2" IRON PIPE (1952)  
25" FIR, N 46 E, 34.7'  
31" FIR, S 20 E, 65.4'  
27" FIR STUB, S 86 W, 11.0' (original)  
6" FIR, N 24 W, 36.2'  
30" ALDER, N 16 W, 6.5'

**W-W-W 1/256 CORNER 33 & 4**  
SET: U.S.F.S. 2 1/2" ALUMINUM MONUMENT  
38" FIR, N 34 W, 13.6'  
24" FIR, S 54 W, 9.1'

**1/4 CORNER 33 & 4**  
FOUND: G.L.O. BRASS CAP ON 1" IRON PIPE (1952)  
44" FIR, N 77 E, 93.1'  
42" FIR, S 7 W, 7.1'

**SECTION CORNER 33, 34, 3, 4**  
FOUND: G.L.O. BRASS CAP ON 2" IRON PIPE (1952)  
18" FIR, N 57 E, 6.1'  
12" FIR, S 54 E, 13.7'  
13" FIR SNAG, S 25 W, 7.1'  
13" FIR, N 29 W, 10.9'

185-46