
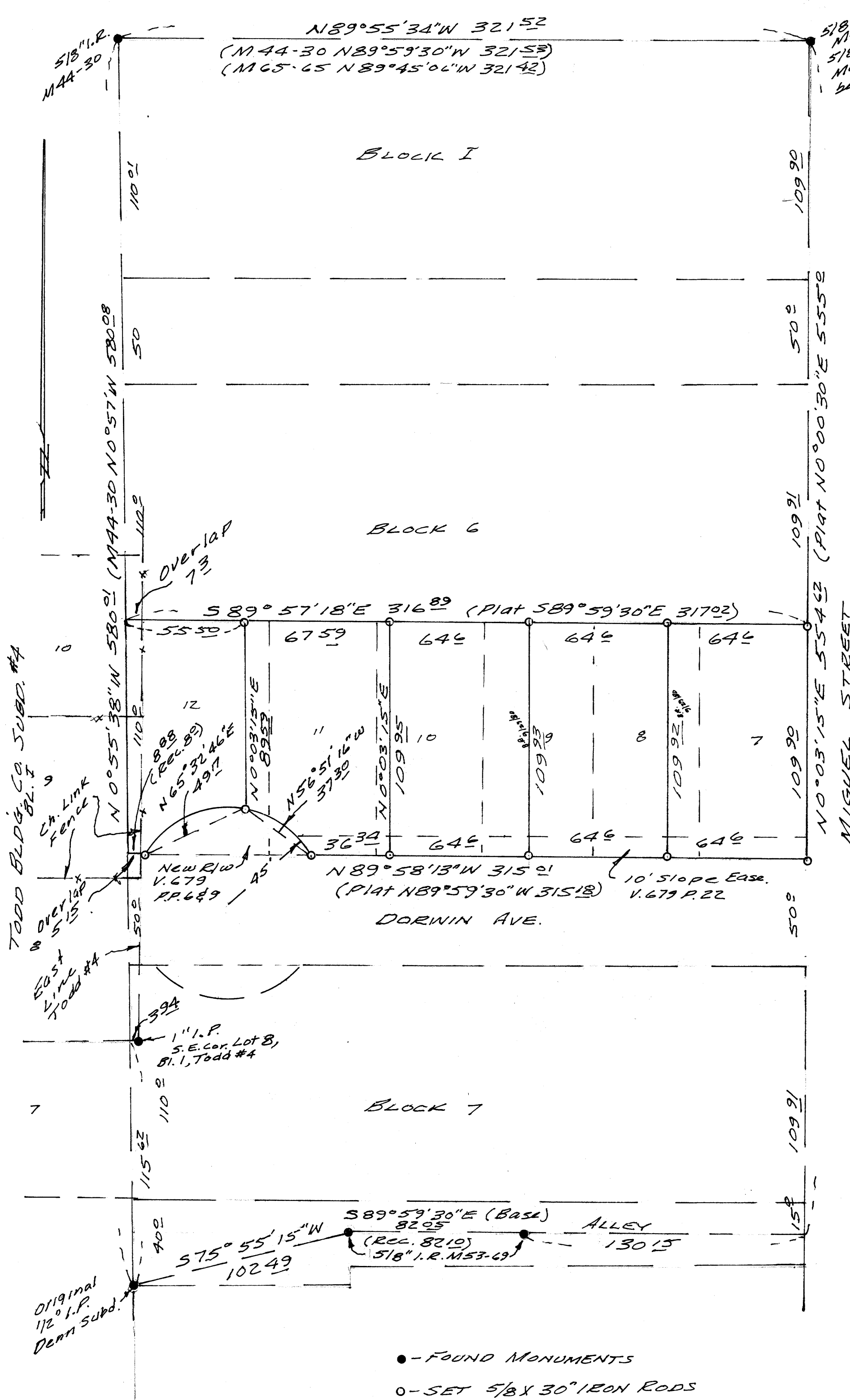


FILED 
RECEIVED 

SEP 22 1980

COUNTY SURVEYOR
DOUGLAS COUNTY, ORE.

SURVEY FOR DEED DESCRIPTIONS
IN BLOCK 5, BLOCK 7 and BLOCK 6
DENN SUBDIVISION
IN S.E. 1/4, S.W. 1/4 SEC. 17, & N.E. 1/4, N.W. 1/4 SEC. 20
T. 27S., E. 5W., W. 1/4.
ROSEBURG, OR.
FOR WAYNE SPICER
by BRUCE ROGERS
2737 N.W. CALKINS
ROSEBURG, OR.
SEPT. 19, 1980 1" = 40'

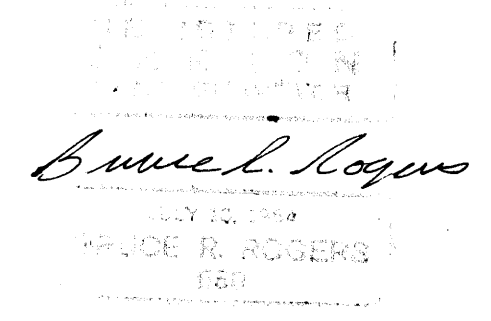


518" I.R.
M44-30
518" I.R. (beats)
M65-65
beats N89°55'34\"/>

Purpose of this survey was to set the corners of the S 1/4 1/2 of Block 6 and cut it into 5 lots instead of the original 6. I began at the two rods in the E of the alley (M53-69) using them for a base I ran to the west line of Miguel St. and thence to the N.E. corner of the Survey (M44-30) I then set the N.E. & S.E. corners of the S 1/4 1/2 of block 6 by proportion.

Then using the same base I traversed up the west line and tied the monuments shown. I set nails at the N.W. & S.W. corners of the S 1/4 1/2 of Bl. 6 and also at the center of the C.D.S. using the existing curbs for control. (the deed description of the new R/W doesn't fit the improvement very well.) When I returned to set the corners, I found that the landowners in Todd #4 had pulled most of my control on the west line. I set the corners shown using the C.D.S. radius point and the S.E. & N.E. corners for control, leaving out the N.W. & S.W. corners. (I was told by the adjoiners that they didn't want any rods set on "their property")

The overlap was previously shown in M44-30 by McLind and M65-65 by Baughman.


Bruce Rogers
JULY 10 1980
BRUCE R. ROGERS
150

● - FOUND MONUMENTS
○ - SET 5/8 X 30" IRON RODS