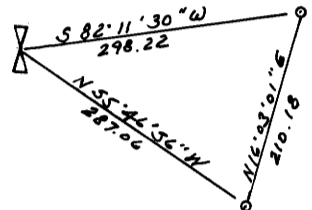


Record of Survey for
International Paper Company

Located in SW 1/4 NW 1/4 & NW 1/4 SW 1/4 Section 31, T20S, R10W
and SE 1/4 NE 1/4 & NE 1/4 SE 1/4 Section 36, T20S, R11W, W.M.
Douglas County, Oregon

NOTES

- (1) BEARINGS BASED ON SURVEY OF SMITH RIVER ACCESS ROAD BY BLM AND INCORPORATED IN TRACTS DESCRIBED IN VOL. 285, PAGE 952, DOUGLAS COUNTY CLERK'S OFFICE
- (2) REFERENCE SURVEY BY C. STEPHENS AND RECORDED WITH DOUGLAS COUNTY SURVEYOR AND FILED JUNE 23, 1964. FOUND NW AND SW MONUMENTS AS CALLED
- (3) DEED REFERENCES:
UNITED STATES OF AMERICA: V285 P952
" " " " 185851
" " " " 284699
- (4) RELATIONSHIP BETWEEN 1/4" IRON PIPES FOUND AND WEST 1/4 CORNER SECTION 31

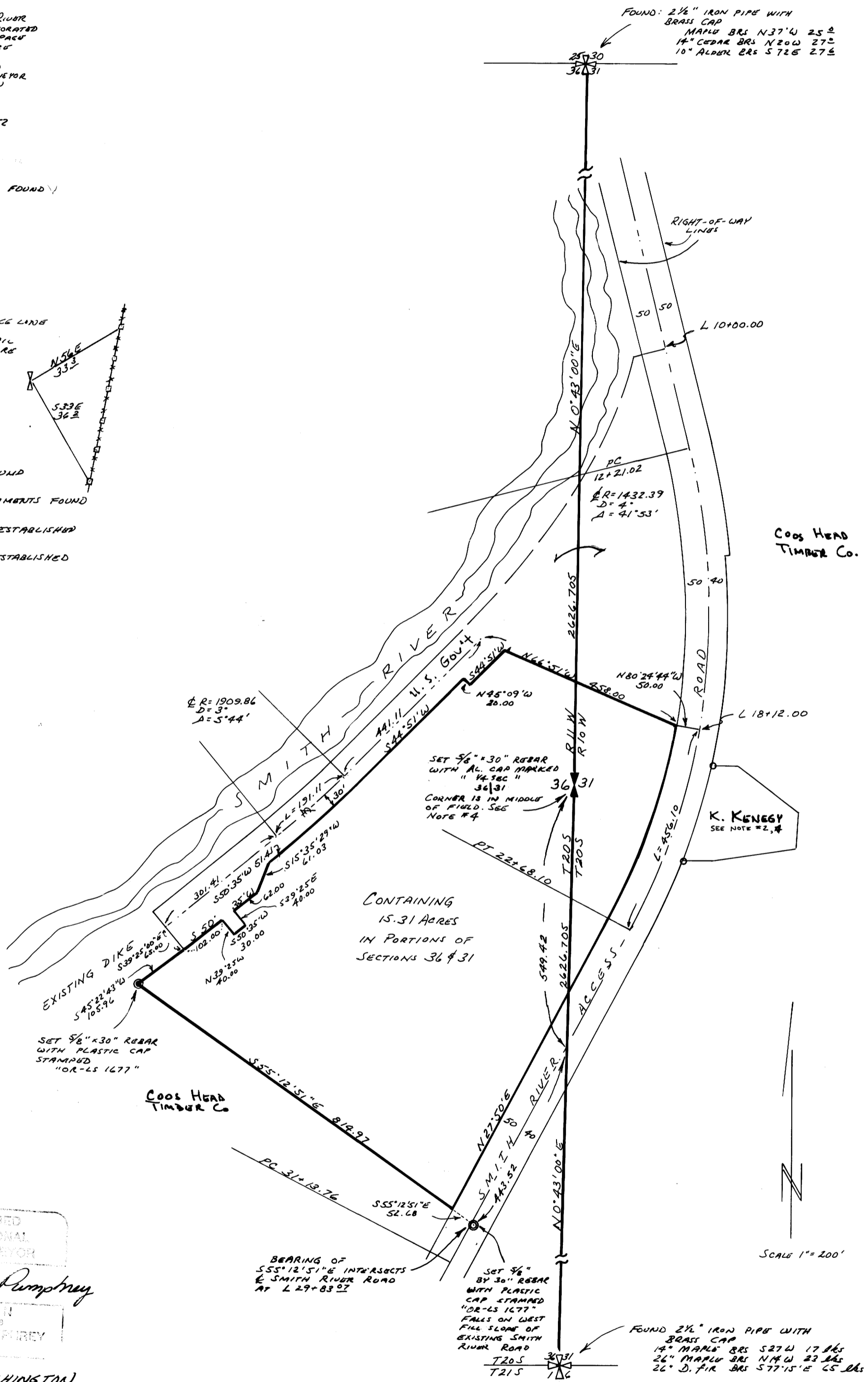


AND R.P.'S ESTABLISHED IN EXISTING FENCE LINE
DISTANCES ARE TO 1/4\"/>

1/4 CORNER IS 7\"/>

LEGEND

- SECTION CORNER FOUND
- PREVIOUS SURVEY MONUMENTS FOUND
- 1/4 SECTION CORNER ESTABLISHED
- SURVEY MONUMENTS ESTABLISHED



CONTAINING
15.31 ACRES
IN PORTIONS OF
SECTIONS 36 & 31

REGISTERED
PROFESSIONAL
LAND SURVEYOR

Frank M. Pumprey

FRANK M. PUMPREY
1677

AMBOY, WASHINGTON
AUGUST 11, 1980