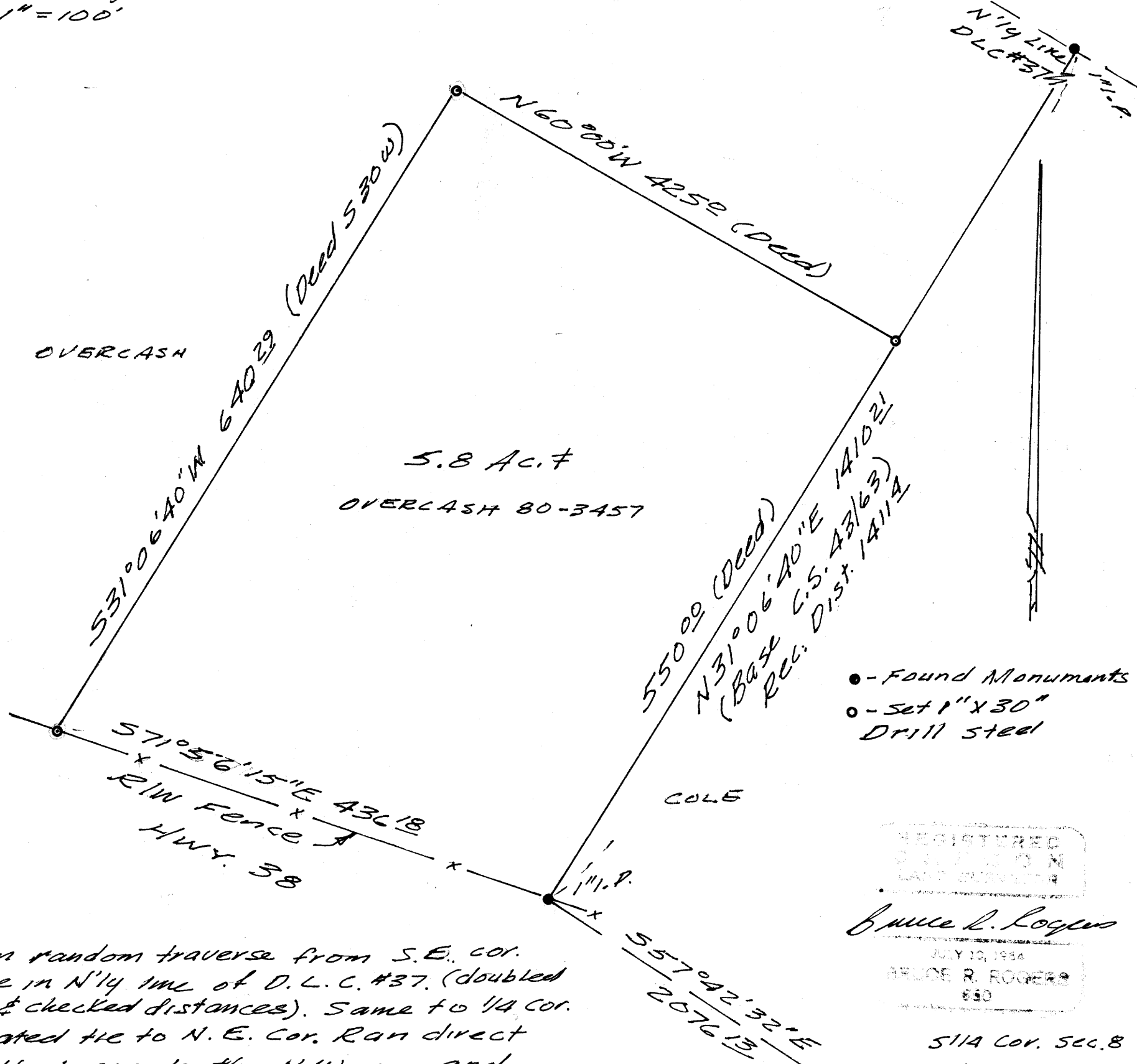


SURVEY TO SET PROPERTY CORNERS
IN THE S.W. 1/4, SEC. 8, T. 22S., R. 6 W. W.M.
FOR JESSE OVERCASH
BY BRUCE ROGERS, 2737 N.W. Calkins, Roseburg, Or.
AUG. 28, 1980
1" = 100'

FILED
RECEIVED
SEP 12 1980
COUNTY SURVEYOR
DOUGLAS COUNTY, ORE



- - Found Monuments
- - Set 1" x 30" Drill steel

REGISTERED
PROFESSIONAL
LAND SURVEYOR

Bruce R. Rogers

JULY 10, 1954
BRUCE R. ROGERS
630

S11A Cor. Sec. 8
Fd Brass Cap
26" Redwood
548W 102LK

N.W. Cor of
wood & cone BTR
bldg. bears
N45E 79.

I ran random traverse from S.E. cor.
to pipe in N'ly line of D.L.C. #37. (doubled
angles & checked distances). Same to 1/4 cor.
calculated tie to N.E. Cor. Ran direct
from that cor. to the N.W. cor. and
to intersection with R/W fence.
All work done with transit & 300' chain.

COUNTY SURVEYORS FILE DATA
DO NOT REMOVE FROM OFFICE