



**Retracement Of Section Line Between Sections 2 & 3
Township 23 South, Range 9 West, W.M.
Douglas County, Oregon**

COUNTY SURVEYORS FILE DATA
DO NOT REMOVE FROM OFFICE

Survey Narrative:

This survey map corrects and amends the previous survey map by me dated 3-14-80. An error was found traverse calculations, causing me to move the 1/4 corner previously set by me 1.52 feet North and 8.63' West. Basis of bearing is solar. Traverse was open-ended and was run with a 1 sec. theodolite and EDM. Distances were measured in both feet and meters. The purpose of the survey was to re-establish the 1/4 corner.

Legend

- Corners Found 
- Corners Set 

Survey For:

1. International Paper Co.
Gardiner, Oregon
2. Northwest Exploration Co.
Denver, Colorado.

Survey By:

Stuntzner Engineering & Forestry
P.O. Box 118 - 375 Park, Suite 11
Coos Bay, Oregon 97420

REGISTERED
PROFESSIONAL
LAND SURVEYOR

Ronald E. Stuntzner

OREGON
SEPTEMBER 23, 1977
RONALD E. STUNTZNER
1342

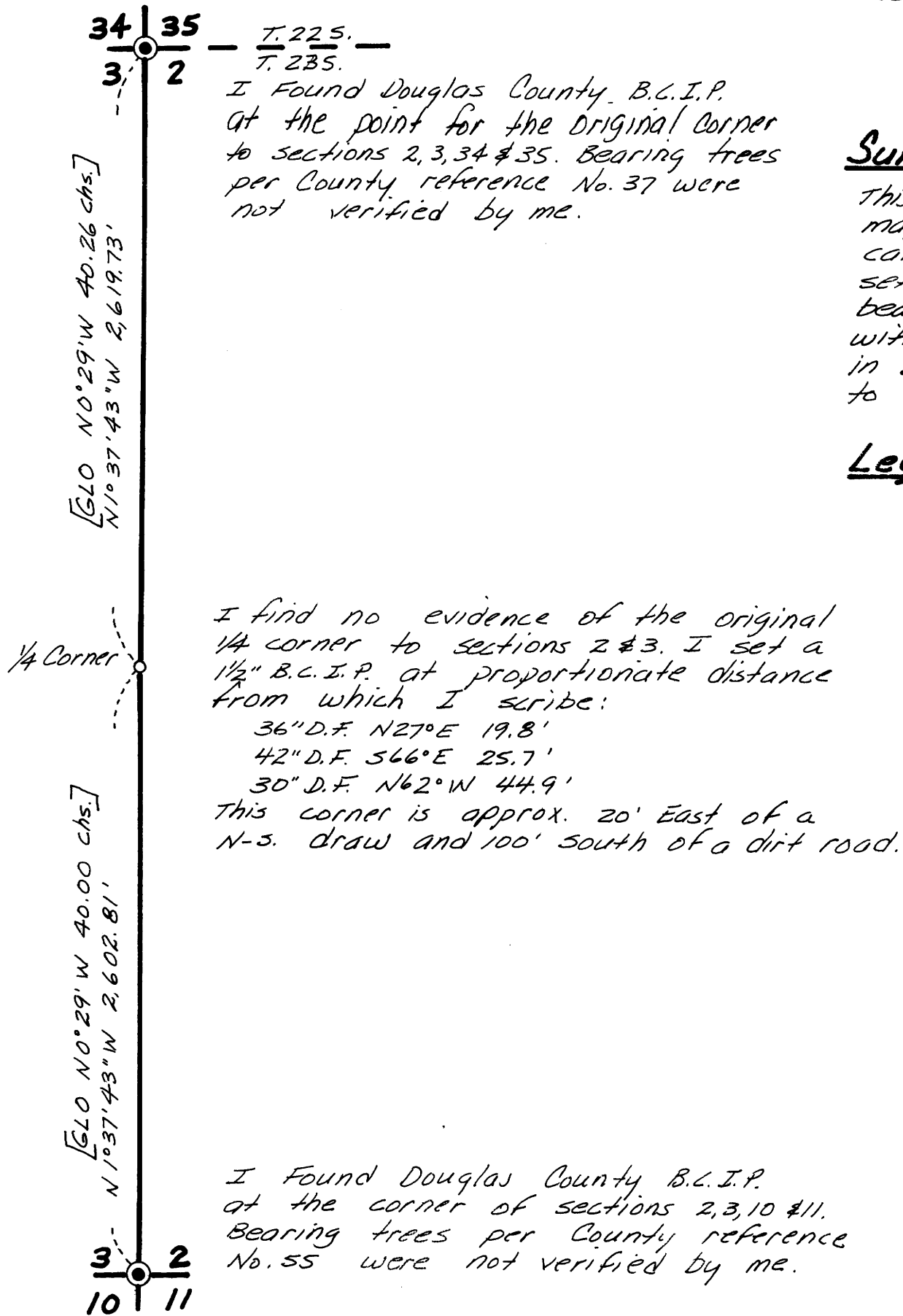
FILED
RECEIVED

SEP 11 1980

COUNTY SURVEYOR
DOUGLAS COUNTY, ORE.



Date: 9-10-80
Scale: 1"=600'



MAP FILE M85-31

MAP FILE M85-31